



CREST
FOODSERVICE EQUIPMENT
Innovative Designs & Solutions

2018

CORRECTIONS & INSTITUTIONS

FOODSERVICE EQUIPMENT & SUPPLY CATALOG

"Women Owned"

- Cooking
- Foodprep
- Baking
- Janitorial
- Warewashing
- Sanitation



GSA Advantage![®]
www.gsaadvantage.gov

CERTIFIED
SWaM Small, Women and Minority-Owned
Supplier Diversity Strengthens the Commonwealth
by the Virginia Department of Minority Business Enterprise

 Ice Makers

 Ranges

 Cooking

 Fryers

 **MANITOWOC**[®]
A Welbilt Brand



 **GARLAND**[®]
A Welbilt Brand



 **CLEVELAND**[®]
A Welbilt Brand



 **FRYMASTER**[®]
A Welbilt Brand





THE GUARDIAN™

Guardian Insulated Trays are molded with a proprietary blend of two plastic resins used for high-impact resistance.

4 Compartment - 14"L x 15-1/2"W x 2-3/4"H
Available in Buff & Chocolate Brown.



| Item No. | Description | Price/cs. |
|-----------|----------------------|-----------|
| PRTS-4000 | Tray - 4 Compartment | \$164.00 |

5 Compartment -
14-1/2"L x 11-1/4"W x 2-1/4"H.
(Fits easily through older cell doors for
in-cell feeding programs). Available in
Brick & Chocolate Brown. 12 per case.



| Item No. | Description | Price/cs. |
|------------|----------------------|-----------|
| PRTS-5000 | Tray - 5 Compartment | \$202.50 |
| PRTSL-5000 | Cover | 167.75 |

6 Compartment -
15"L x 13-1/2"W x 2-1/2"H. Available in
Chocolate & Teal. 12 per case.



| Item No. | Description | Price/cs. |
|------------|----------------------|-----------|
| PRTS-6000 | Tray - 6 Compartment | \$201.50 |
| PRTSL-6000 | Cover | 167.75 |



ROCK 2.0 INSULATED TRAY

Made from an insulated
material, not internal insulation,
which means it will not absorb water.
Radius corners and softly beveled bottom. 14.25"L x 9.5"W
x 2.25"H. Available in Brown, Dark Gray, Terra Cotta (Burnt
Orange) and Orange. 10 per case.



| Item No. | Description | Price/cs. |
|----------|-------------|-----------|
| 2500C | Tray | \$154.00 |
| 2000CL | Cover | 91.00 |

DEAD MAN BOX

Stack and store up to
3 days worth of trays in your freezer.
All welded construction. Holds
(9 each) 10" x 14-1/2" trays with lids.



| Item No. | CALL FOR PRICING |
|----------|------------------|
| 97039 | |



X-TRAY INSULATED TRAY

Extreme Insulated Tray, True One-Piece, seamless design
that has 5 compartments and 2 condiment compartments
for bulk use. 14.25"L x 9.5"W x 2.25"H. Available in Brown,
Dark Gray, Terra Cotta (Burnt Orange) and Orange. 10 per
case.

| Item No. | Description | Price/cs. |
|----------|-------------|-----------|
| 3000C | Tray | \$171.00 |
| 3000CL | Cover | 97.00 |



CHUCKWAGON JR. MEAL TRAY DELIVERY CART

Accommodates any tray up
to 9- 1/2" x 14-1/2". Will hold
60 X-Trays or 80 Rock Trays.
44"L x 30.5"D x 59.5"H.



| Item No. | Price/ea. |
|----------|-----------|
| C1716 | \$2235.00 |

CHUCKWAGON MEAL TRAY DELIVERY CART

Constructed of high impact
polyethylene with no seams,
no welded walls, no adhesives
and no mechanically attached walls.
56"L x 31"D x 59"H.



| Item No. | Price/ea. |
|----------|-----------|
| C1717 | \$3325.00 |

TRANSPORT STRAPS

Pinch buckle. Black.



| Item No. | Size | Price/ea. |
|------------|------|-----------|
| 1EPR-66-15 | 15' | \$8.25 |
| 1EPR-66-18 | 18' | 9.25 |
| 1EPR-66-22 | 22' | 10.50 |

*Custom sizes available.

TRAY CARRIER

Insulated Tray carrier. Stack your trays and
strap them down tightly. Made for all insulated
trays. Specify which tray you have when ordering.



| Item No. | CALL FOR PRICING |
|----------|------------------|
| TC1000 | |



3 AND 4 COMPARTMENT TRAYS

Three & four compartment trays offer menu options and large portions. 24 per case. Available in Teal, Buff and Chocolate Brown.

CO-POLYMER

| Item No. | Description | Price/cs. |
|-----------|---------------------------------|-----------|
| PPST-9300 | 3 Comp., 10-5/8" x 8-1/2" x 2"D | \$82.50 |
| PPST-9400 | 4 Comp., 10-5/8" x 8-1/2" x 2"D | 84.75 |
| PPJZL-9 | Lid, Clear | 75.00 |

POLYCARBONATE

| Item No. | Description | Price/cs. |
|----------|---------------------------------|-----------|
| ST-9300 | 3 Comp., 10-5/8" x 8-1/2" x 2"D | \$144.50 |
| ST-9400 | 4 Comp., 10-5/8" x 8-1/2" x 2"D | 154.25 |
| JZL-9 | Lid, Clear | 126.00 |

MAX-FLEX

| Item No. | Description | Price/cs. |
|------------|---------------------------------|-----------|
| FXSTB-9300 | 3 Comp., 10-5/8" x 8-1/2" x 2"D | \$180.00 |
| FXSTB-9400 | 4 Comp., 10-5/8" x 8-1/2" x 2"D | 180.00 |
| FXLB-9 | Lid, Clear | 138.50 |

Available in Teal and Chocolate Brown

E-Z TRAY

24 per case. Available in Teal, Buff and Chocolate Brown



CO-POLYMER

| Item No. | Description | Price/cs. |
|----------|------------------------|-----------|
| PPST-67 | 18" x 11-7/8" x 1-1/2" | \$168.75 |

POLYCARBONATE

| Item No. | Description | Price/cs. |
|----------|------------------------|-----------|
| ST-67 | 18" x 11-7/8" x 1-1/2" | \$223.75 |

6 COMPARTMENT TRAY

24 per case. Available in Buff, Chocolate Brown and Teal.



CO-POLYMER

| Item No. | Description | Price/cs. |
|----------|------------------------|-----------|
| PPST-200 | 15" x 10-3/4" x 1-3/8" | \$112.00 |

POLYCARBONATE

| Item No. | Description | Price/cs. |
|----------|---------------------------------|-----------|
| ST-200 | 6 Comp., 10-5/8" x 8-1/2" x 2"D | \$184.75 |



SIX COMPARTMENT TRAYS

14-3/4"L x 10"W x 1-1/2"H. 24 per case.

COPOLYMER

| Item No. | Description | Price/cs. |
|----------|-------------------------------|-----------|
| PPST-28 | Tray, Buff, Chocolate or Teal | \$114.50 |
| PPSTL-28 | Lid, Clarified | 107.50 |

POLYCARBONATE

| Item No. | Description | Price/cs. |
|----------|--------------------------------|-----------|
| ST-28 | Tray, Buff, Chocolate, or Teal | \$186.00 |
| STL-28 | Lid, Clear | 194.50 |

MAX-FLEX

| Item No. | Description | Price/cs. |
|----------|--------------------------|-----------|
| FXSTB-28 | Tray, Teal and Chocolate | \$233.50 |
| FXLB-28 | Lid, Clarified | 215.50 |



CO-POLYMER TUMBLERS

72 per case. Buff, Chocolate, Teal & Translucent



| Item No. | Capacity | Price/cs. |
|----------|----------|-----------|
| V-6* | 5 oz. | \$49.25 |
| V-10** | 9 oz. | 49.25 |
| V-12 | 12 oz. | 59.75 |
| V-16 | 16 oz. | 65.50 |

*Available in Buff and Orange Only

**Also available in Orange

MAX-FLEX TUMBLERS

72 per case.

Available in Chocolate



| Item No. | Capacity | Price/cs. |
|----------|----------|-----------|
| *FXV-10 | 9 oz. | 118.25 |
| FXV-12 | 12 oz. | 150.50 |
| FXV-16 | 16 oz. | 200.00 |

*Also available in Orange

POLYCARBONATE TUMBLERS

72 per case. Amber.

| Item No. | Capacity | Price/cs. |
|----------|----------|-----------|
| PCWT-12 | 12 oz. | \$83.50 |





CO-POLYMER MUGS

72 per case.

| Item No. | Capacity | Colors | Price/cs. |
|----------|----------|-----------------------|-----------|
| SC-7 | 7 oz. | Buff, Chocolate, Teal | \$86.50 |
| SM-8/9 | 8 oz. | Buff, Chocolate | 121.50 |
| SM-10 | 10 oz. | Buff, Chocolate, Teal | 125.25 |



MAX-FLEX MUGS

72 per case.

| Item No. | Capacity | Colors | Price/cs. |
|----------|----------|------------------|-----------|
| FXSM-8/9 | 8 oz. | Chocolate | \$193.00 |
| FXSM-10 | 12 oz. | Teal & Chocolate | 214.50 |



INSULATED MUG

Stackable and features a double wall construction insulated with ozone-safe foam. 8 oz., 48 per case. Colors: Chocolate, Cranberry and Midnight Blue.

| Item No. | Price/ea. |
|----------|-----------|
| DX1197 | \$76.75 |



DISPOSABLE LIDS

Fits 8 oz. mug. 2000 per case. Translucent.

| | |
|------------|-------------|
| DX11948700 | \$72.25/cs. |
|------------|-------------|



ECO SECURITY UTENSIL

Made from a slick, moisture resistant, FDA approved paperboard, much like a milk carton. In one fold, it becomes the perfect sturdy scoop for any semi-solid food that doesn't require cutting. 5,000 per case.

| | |
|-----|--------------|
| ESU | \$250.00/cs. |
|-----|--------------|



DESIGN SPECIALTIES POLYCARBONATE TUMBLERS

Available in Clear and Amber.
48 per case.

| Item No. | Description | Price/cs. |
|----------|-------------|-----------|
| DS-500 | 5 oz. | \$46.00 |
| DS-800 | 8 oz. | 52.00 |
| DS-950 | 9.5 oz. | 54.75 |
| DS-120 | 12 oz. | 55.00 |
| DS-160 | 16 oz. | 68.50 |



CO-POLYMER FLATWARE

These attractive utensils are almost as hard to break as polycarbonate... when they are broken, they have a dull edge making them less likely to injure someone.

Available colors: Buff and Orange.
360 per case.



| Item No. | Description | Price/cs. |
|----------|-------------|-----------|
| K-7 | Knife | \$99.50 |
| F-7 | Fork | 87.75 |
| OB-6 | Spoon | 88.00 |
| SF-7 | Spork | 42.75 |

POLYCARBONATE FLATWARE

Big Grip Flatware, ergonomically shaped and molded from extremely durable polycarbonate. They are long lasting, washable and reusable. Available Colors: Buff and Yellow



| Item No. | Description | Case Pack | Price/cs. |
|----------|-------------------|-----------|-----------|
| PCK-8 | Knife | 432 | \$111.75 |
| PCF-7 | Fork | 432 | 70.00 |
| PCSS-6 | Soup Spoon | 432 | 76.75 |
| PCTS-6 | Teaspoon | 432 | 76.50 |
| PCSF-7 | Spork (Buff Only) | 360 | 87.00 |



MAX-FLEX FLATWARE

| Item No. | Description | Colors | Price/cs. |
|----------|--------------------|--------|-----------|
| FXSSC-6 | Soup Spoon/432 cs. | Buff | \$108.00 |
| FXSFD-7 | Spork/360 cs. | Orange | 85.00 |





INSULATED BOWL

Stackable and features a double wall construction insulated with ozone-safe foam. 9 oz. 48 per case. Midnight Blue and Cranberry.



Disposable Lid, Translucent, 1000 per case.

| | | |
|------------|----------------|-------------|
| DX1185 | Bowl | \$77.75/cs. |
| DX11858714 | Disposable Lid | 54.75/cs. |



COPOLYMER BOWLS

Available colors: Buff and Chocolate. 72 per case.

| Item No. | Description | Price/cs. |
|----------|----------------------|-----------|
| SVD-5 | 5 oz., Rimmed Bowl | \$105.00 |
| SRSB-15 | 15 oz., Rimmed Bowl | 99.50 |
| SSB-15 | 15 oz., Rimless Bowl | 91.25 |

SVD-5 is only available in Buff
SRSB-15 is also available in Teal



FLEX BOWL

Available in Chocolate Brown 72 per case.

| Item No. | Description | Price/cs. |
|----------|---------------------|-----------|
| FXSSB-15 | 15 oz. Rimless Bowl | \$162.00 |



CAFE TRAYS

Economical lightweight polypropylene trays feature skid resistant surface. 24 per case.



| Item No. | Description | Price/cs. |
|----------|-------------|-----------|
| CT1014 | 10" x 14" | \$39.50 |
| CT1216 | 12" x 16" | 49.00 |
| *CT1418 | 14" x 18" | 32.50 |

*12 per case

INSULATED TRANSPORT BAG

Holds 6 insulated trays. Custom sizes available. Colors - Red, Yellow, Blue, Green & Orange.

| | |
|-----|-------------|
| MCT | \$63.50/ea. |
|-----|-------------|



SUPER SPORK

Econoblend, Orange, 6-3/4" long, 432 per case.

| Item No. | Price/cs. |
|----------|-----------|
| SSPRO-36 | \$57.00 |



SHORT SPORK

Econoblend, Bright Yellow, 5-1/4" long, 600 per case.

| Item No. | Price/cs. |
|----------|-----------|
| SSPRO-50 | \$72.00 |



XTREM FLEX SOUP SPOON

Cannot be sharpened or made into a weapon. Brown, 432 per case

| Item No. | Price/cs. |
|----------|-----------|
| XF-173 | \$130.75 |



BOWLS

48 per case.



| Item No. | Description | Price/cs. |
|----------|--|-----------|
| B-10 | 10 oz., Polycarbonate (Almond, Cinnabar) | \$72.00 |
| BP-10 | 10 oz., Econoblend (Bamboo Tan, Brown) | 51.75 |
| BX-10 | 10 oz., Xtremflex (Brown) | 76.25 |

| Item No. | Description | Price/cs. |
|----------|---------------------------------|-----------|
| B-15 | 15 oz., Polycarbonate (Almond) | \$72.00 |
| BP-15 | 15 oz., Econoblend (Bamboo Tan) | 57.50 |

POLYCARBONATE PLATES

Available colors: Black, Beige, White and Slate Blue. 48 per case. NSF



| Item No. | Description | Price/cs. |
|----------|--------------------------|-----------|
| 55CWN | 5-1/2" Narrow rim plate | \$60.50 |
| 65CWN | 6-9/16" Narrow rim plate | 71.50 |
| 725CWN | 7-1/4" Narrow rim plate | 98.00 |
| 825CWN | 8-1/4" Narrow rim plate | 115.00 |
| 9CWN | 9" Narrow rim plate | 110.50 |
| 10CWN | 10" Narrow rim plate | 152.00 |



ERGONOMIC DISHERS

Stainless steel bowl with polypropylene handle. NSF Approved.



| Item No. | Color | Size | Capacity | Price/ea. |
|----------|--------|------|-----------|-----------|
| SLDS006L | White | 6 | 5-1/3 oz. | \$9.75 |
| SLDS008L | Gray | 8 | 4 oz. | 9.75 |
| SLDS010L | Ivory | 10 | 3-1/4 oz. | 9.75 |
| SLDS012L | Green | 12 | 2-2/3 oz. | 9.75 |
| SLDS016L | Blue | 16 | 2 oz. | 9.75 |
| SLDS020L | Yellow | 20 | 1-2/3 oz. | 9.75 |
| SLDS024L | Red | 24 | 1-1/3 oz. | 9.75 |
| SLDS030L | Black | 30 | 1 oz. | 9.75 |
| SLDS040L | Orchid | 40 | 3/4 oz. | 9.75 |

STAINLESS STEEL DISHERS

Stainless steel scoop with standard length shaft. One-Piece design. Color coded.



| Item No. | Description | Price |
|----------|----------------------------|---------|
| 47388 | Size 4, 8 oz., - Orange | \$16.00 |
| 47389 | Size 5, 6 oz. - Teal | 16.00 |
| 47404 | Size 100, .33 oz. - Orange | 11.50 |



NYLON SLOTTED TURNER

High temperature nylon heat resistant to 475°F. Textured surface. 13" O.A.



| Item No. | Price |
|----------|------------|
| 5284120 | \$5.25/ea. |



HIGH HEAT CAMTENSIL® TURNERS

One-piece, high heat turner. Dishwasher and microwave safe. Resists heat up to 375°F without melting or transferring heat. Black.



| Item No. | Description | Price/ea. |
|----------|--------------|-----------|
| SPA14 | 14", Solid | \$7.00 |
| SPASL14 | 14", Slotted | 7.00 |



SQUEEZE DISHERS - EXTENDED LENGTHS

Extended lengths for use with a variety of pan depths. Durable s/s bowl and shaft. Ergonomic design for maximum comfort. NSF.



| Item No. | Color | Size | Capacity | Price/ea. |
|----------|------------|------|-----------|-----------|
| 47370 | White | 6 | 4-3/4 oz. | 14.50 |
| 47371 | Gray | 8 | 3-3/4 oz. | 14.50 |
| 47372 | Ivory | 10 | 3-1/4 oz. | 14.50 |
| 47373 | Green | 12 | 2-7/8 oz. | 14.50 |
| 47374 | Royal Blue | 16 | 2 oz. | 14.50 |
| 47375 | Yellow | 20 | 1-7/8 oz. | 14.50 |
| 47376 | Red | 24 | 1-1/2 oz. | 14.50 |
| 47377 | Black | 30 | 1-1/8 oz. | 14.50 |
| 47378 | Orchid | 40 | 3/4 oz. | 14.50 |
| 47379 | Pink | 60 | 1/2 oz. | 14.50 |

PORTION CONTROL UTENSILS

One-piece durable construction. Serving sizes clearly marked on handle and color coded by size.



| Solid Item No. | Perforated Item No. | Price/ea. | Capacity |
|----------------|---------------------|-----------|----------|
| SPD-1S | - | \$4.25 | 1 oz. |
| SPD-2S | SPD-2P | 4.25 | 2 oz. |
| SPD-4S | SPD-4P | 5.00 | 4 oz. |
| SPD-6S | SPD-6P | 5.25 | 6 oz. |
| SPD-8S | SPD-8P | 5.50 | 8 oz. |
| SPD-10S | SPD-10P | 6.00 | 10 oz. |
| SPD-12S | SPD-12P | 6.25 | 12 oz. |

PORTION CONTROLLER

Solid color handles. One piece construction.



| Perf. Item No. | Solid Item No. | Color | Capacity | Price/ea. |
|----------------|----------------|-------|----------|-----------|
| 5757421 | 5757420 | Red | 2 oz. | \$3.00 |
| 5757431 | 5757430 | Beige | 3 oz. | 3.50 |
| 5757441 | 5757440 | Green | 4 oz. | 4.00 |
| 5757461 | 5757460 | Black | 6 oz. | 4.50 |
| 5757481 | 5757480 | Blue | 8 oz. | 5.50 |

STAINLESS STEEL SERVING SPOONS

Heavy-gauge 18-8 stainless steel.

| Item No. | Description | Price/ea. |
|----------|----------------|-----------|
| 2770 | 15" Solid | \$3.00 |
| 2774 | 15" Slotted | 3.00 |
| 2772 | 15" Perforated | 3.00 |



LIGHT DUTY STAINLESS STEEL MIXING PADDLES

Heavy-gauge 18-8 stainless steel.

| Item No. | Length | Price/ea. |
|----------|--------|-----------|
| 19936 | 36" | \$15.00 |
| 19948 | 48" | 19.25 |
| 19960 | 60" | 21.50 |



LIGHT DUTY STAINLESS STEEL WHIP

Dome design. Handle 48" long.

| Item No. | Price/ea. |
|----------|-----------|
| SLKW048 | \$49.00 |



LIGHT DUTY POTATO MASHER

5" head, 24-3/4" O.A. dimensions, stainless steel, sealed head.

| Item No. | Price |
|----------|-------------|
| 3406 | \$12.00/ea. |



ONE-PIECE MIXING PADDLE/SCRAPERS

One piece, injection molded polypropylene construction. Heavy-duty, long lasting, virtually unbreakable. Working temperature -22°F - 176°F.



| Item No. | Description | Price/ea. |
|----------|--|-----------|
| 6774 | Short Paddle w/ holes, 6" x 13" x 40" | \$43.75 |
| 6775 | Short Paddle w/o holes, 6" x 13" x 40" | 43.75 |
| 6776 | Long Paddle w/ holes, 6" x 13" x 52" | 47.50 |
| 6777 | Long Paddle w/o holes, 6" x 13" x 52" | 47.50 |

SCRAPER

All plastic, no seams or cracks for bacterial growth.



| Item No. | Price/ea. |
|----------|-----------|
| 6962 | \$5.00 |

CAMBRO
TRUSTED FOR GENERATIONS™

CAMWEAR® PITCHER

Clear Pitcher, 60 oz. dishwasher safe, polycarbonate. 7-7/8"H x 6-3/4"D. NSF.

| Item No. | Price |
|----------|------------|
| PL60CW | \$4.75/ea. |



PITCHER

Lightweight for easy handling. A thumb-grip pour control, exclusive ice-control contoured lip and pour spout reduce spills. 64 oz. 9-3/4"H x 7-5/16"D. NSF.

| Item No. | Price |
|----------|-------------|
| PC64CW | \$10.00/ea. |



PITCHER

Pitcher, with lid. Plastic, 1 gallon, white.

| Item No. | Price |
|----------|-------------|
| 280-1728 | \$17.00/ea. |



AIRPOT

84 oz. Airpot, stainless steel lined, brushed stainless steel body, black.

| Item No. | Price |
|------------|-------------|
| LSVL-25/BK | \$42.00/ea. |



KETTLE STRAINER

9" overall diameter, for 1-1/2" kettle faucets, 3/16" strainer holes, stainless steel.

| Item No. | Price |
|----------|-------------|
| 230-1000 | \$88.00/ea. |



BUTTER SPREADER

Butter Spreader, 7" x 6-3/8", includes 1/6 size pan & removable perforated roller, designed for countertop, stainless steel.

| Item No. | Price |
|----------|-------------|
| SPBR-604 | \$21.50/set |





ROLL TOP CHAFER

Dallas Chafer, 8 quart, full size, stainless steel w/gold accents, roll top.

| Item No. | Price/ea. |
|----------|-----------|
| C-5080 | \$90.00 |



DELUXE CHAFER

Crown Chafer, 8 quart, full size, 18/8 stainless steel, dome cover.

| Item No. | Price/ea. |
|----------|-----------|
| 408-1 | \$61.75 |



ECONOMY CHAFER

Full size, built in cover holder, stainless steel construction.

| Item No. | Price/ea. |
|----------|-----------|
| 575126 | \$56.00 |



ECONOMY FRENCH FRY CUTTERS

| Item No. | Description | Price/ea. |
|----------|-------------|-----------|
| FFC-25 | 1/4" Size | \$66.50 |
| FFC-38 | 3/8" Size | 67.50 |
| FFC-50 | 1/2" Size | 69.75 |



REDCO® INSTA CUT™

Tabletop, Aluminum base with stainless steel rods. Manual operation. Smooth, simple, one-stroke operation. Easy grip handle. One-piece blade assembly. 2-year warranty.



| Item No. | Description | Price/ea. |
|----------|--------------------|-----------|
| 15000 | Dice / 1/4" | \$189.50 |
| 15001 | Dice / 3/8" | 189.50 |
| 15002 | Dice / 1/2" | 189.50 |
| 15003 | Wedge / 4 section | 189.50 |
| 15005 | Wedge / 6 section | 189.50 |
| 15006 | Wedge / 8 section | 189.50 |
| 15007 | Wedge / 10 section | 189.50 |
| 15008 | Wedge / 12 section | 189.50 |



POTATO CUTTERS

| Item No. | Description | Price/ea. |
|----------|-------------------|-----------|
| 47703 | Wedge cut, 8 cut | \$220.00 |
| 47713 | French Fry, 3/8" | 197.50 |
| 47714 | French Fry, 7/16" | 197.50 |
| 47715 | French Fry, 9/32" | 197.50 |
| 45682 | Wall hang bracket | 45.00 |



EASY CHOPPER™

Fast, easy & efficient chopping. Consistent cut for portion control.

| Item No. | Description | Price/ea. |
|----------|-------------|-----------|
| 55500-1 | 1/4" cut | \$184.00 |
| 55500-2 | 3/8" cut | 184.00 |
| 55500-3 | 1/2" cut | 184.00 |



ECONOMY DIPPER

5-1/2" dia. x 4"H, 6-1/2" welded handle, aluminum.

| Item No. | Size | Price/ea. |
|----------|--------|-----------|
| ALD-30 | 30 oz. | \$21.00 |



BOWL SCOOPS

One-piece, injection molded construction. Sturdy and durable. Available in Blue, Green, Red, White and Yellow.

| Item No. | Size | Price/ea. |
|----------|--------|-----------|
| *5681 | 32 oz. | \$10.75 |
| 5682 | 64 oz. | 11.75 |

* Also available in Orange, Pink and Purple



PROFESSIONAL TRANSFER LADLES & DIPPERS

3004 aluminum alloy construction. Insulated handle.

| Item No. | Size | Price/ea. |
|----------|--------|-----------|
| 5330 | 30 oz. | \$56.50 |
| 5332 | 64 oz. | 69.00 |
| *4752 | 64 oz. | 56.50 |

*Handle welded at 57° angle





PEELERS

| Item No. | Description | Price/ea. |
|----------|---------------------|-----------|
| E5601 | Firm Grip™ Straight | \$4.75 |
| E5602 | Firm Grip™ "Y" | 4.75 |
| 18400 | Sani-Safe Peeler | 4.50 |

BAKERS SPATULA

Scraper, flat white blade.

| Item No. | Size | Price/ea. |
|----------|------|-----------|
| 71771 | 10" | \$1.75 |
| 71774 | 14" | 2.50 |
| 71777 | 16" | 2.75 |



SPOON SHAPED SCRAPERS

Bowl-shape head, white blade.

| Item No. | Size | Price/ea. |
|----------|------|-----------|
| PSGE-10 | 10" | \$2.00 |
| PSGE-14 | 14" | 2.50 |
| PSGE-16 | 16" | 3.00 |



HIGH HEAT SCRAPERS

Temperature range up to 600°F.

| Item No. | Size | Price/ea. |
|----------|---------|-----------|
| 71772 | 10-1/2" | \$4.00 |
| 71778 | 16-1/2" | 8.50 |



SPREADER

Nylon Spreader, White
Pack of 12

| Item No. | Size | Price/pk. |
|----------|---------|-----------|
| CR-925 | 7-3/4" | \$7.00 |
| CR-926 | 11-1/2" | 9.50 |



DELUXE ONE PIECE LADLES

One piece construction.

| Item No. | Size | Price/ea. |
|----------|--------|-----------|
| 575701 | 1 oz. | \$3.50 |
| 575702 | 2 oz. | 4.00 |
| 575703 | 3 oz. | 4.50 |
| 575704 | 4 oz. | 5.00 |
| 575706 | 6 oz. | 5.50 |
| 575708 | 8 oz. | 6.00 |
| 575712 | 12 oz. | 6.50 |



KETTLE LADLES - HEAVY DUTY W/L SHAPED HANDLE

18 gauge, 304 stainless steel bowl with 16 gauge stainless steel handle.



| Item No. | Capacity | Height | Price/ea. |
|----------|----------|--------|-----------|
| L2 | 2 qt. | 19" | \$260.00 |
| L3 | 3 qt. | 20" | 286.75 |
| L4 | 4 qt. | 21.5" | 316.00 |
| L6 | 6 qt. | 23.5" | 343.75 |

KETTLE LADLES - HEAVY DUTY W/STRAIGHT HANDLE

14 gauge stainless steel drawn bowl and 1-1/4" diameter - 16 gauge handle.

| Item No. | Capacity | Height | Price/ea. |
|----------|----------|--------|-----------|
| LL4 | 4 qt. | 60" | \$450.00 |
| LL6 | 6 qt. | 60" | 491.00 |
| LL6PERF* | 6 qt. | 60" | 730.75 |

*Perforated Bowl



KETTLE PADDLES - HEAVY DUTY

12 gauge, 304 stainless steel paddle head with 1-1/2" holes contoured to inside a kettle shell.

| Item No. | Description | Price/ea. |
|----------|-----------------------|-----------|
| PS | 48"L, 16 gauge handle | \$240.50 |
| PS-11 | 48"L, 11 gauge handle | 275.00 |
| PL | 58"L, 16 gauge handle | 303.00 |
| PL-11 | 58"L, 11 gauge handle | 367.00 |



KETTLE WHIPS - HEAVY DUTY

304 stainless steel whip wires. 1-1/4" diameter handle.

| Item No. | Description | Price/ea. |
|----------|-------------------------|-----------|
| WC | Conical, 58"L, 16 gauge | \$481.00 |
| WC-11 | Conical, 58"L, 11 gauge | 572.75 |
| WS | Balloon, 58"L, 16 gauge | 486.00 |
| WS-11 | Balloon, 58"L, 11 gauge | 600.50 |



UTILITY TONGS

Stainless steel. Spring action.



| Item No. | Length | Price/ea. |
|----------|--------|-----------|
| UT-9HT | 9" | \$1.75 |
| UT-12HT | 12" | 2.00 |
| UT-16HT | 16" | 2.50 |

COLOR CODED TONGS

Stainless steel with color coded handle. Available colors: Blue, Red, Black, Yellow, Green.



| Item No. | Length | Price/ea. |
|----------|--------|-----------|
| 3712 | 12" | \$4.75 |

FRENCH WHIPS

Stainless steel.

| Item No. | Length | Price/ea. |
|----------|--------|-----------|
| FWE-10 | 10" | \$6.00 |
| FWE-12 | 12" | 6.75 |
| FWE-16 | 16" | 7.00 |
| FWE-20 | 20" | 8.75 |



NYLON HANDLE FRENCH WHIPS

18-8 stainless steel. Thicker wires for mixing heavy products.

| Item No. | Length | Price/ea. |
|----------|--------|-----------|
| 47091 | 12" | \$8.75 |
| 47093 | 16" | 10.25 |
| 47094 | 18" | 11.25 |
| 47095 | 20" | 13.00 |
| 47096 | 22" | 14.00 |
| 47097 | 24" | 15.00 |



ELECTRIC KNIFE SHARPENER

One fine, one coarse & one stropping/polish wheels, magnetized drawer for metal shavings, UL, NSF



WKS800 \$239.00/ea.

PIE SERVER

Stainless steel blade with molded white polypropylene handle. 3" x 5". NSF Certified.

P94853 \$9.00/ea.



DOUGH CUTTER

Stainless steel blade with molded white polypropylene handle. 6" x 3". NSF Certified.



W5697 \$8.50/ea.

TURNERS

Stainless steel blade with molded white polypropylene handle. 8" x 3". NSF Certified.



| Item No. | Description | Price/ea. |
|----------|------------------------------|-----------|
| W5683 | Solid with White handle | \$9.75 |
| R5683 | Solid with Red handle | 9.75 |
| W5681 | Perforated with White handle | 9.75 |

PIZZA CUTTER

4" stainless steel wheel with molded white polypropylene handle. NSF Certified.



W5691-4 \$14.25/ea.

SCALLOPED EDGE SANDWICH SPREADER

Stainless steel blade with white polypropylene handle. 3-1/2"L. NSF Certified.



W5688E \$3.00/ea.

GRIDDLE SCRAPER

Stainless steel blade with molded white polypropylene handle. 4"L. NSF Certified.



W5692-4 \$8.75/ea.

BAKER'S ICING SPATULA

Stainless steel blade with molded white polypropylene handle.

| Item No. | Length | Price/ea. |
|----------|--------|-----------|
| W5650-6 | 6" | \$ 7.75 |
| W5650-12 | 12" | 12.25 |



KITCHEN SHEARS

| Item No. | Description | Price/ea. |
|-----------|--|-----------|
| E6606 | Stainless steel blade, Black poly handle | \$7.75 |
| SGS01B-CP | High carbon/no stain blade, SofGrip handle | 9.75 |



UTILITY TETHER SYSTEM

Complete Kit includes (1) 5' cable, (1) security fastener & a lock.

| Item No. | Description | Price/ea. |
|----------|------------------------|-----------|
| UTS-100L | Complete Kit | \$22.00 |
| UTS-100 | Kit without Lock | 11.50 |
| UTS-SF | Security Fastener only | 5.50 |
| UTS-CBL | 5' Cable only | 6.00 |



PARING KNIVES

High carbon/no stain blade with molded white polypropylene handle. NSF Certified. Sold in packs of 3.

| Item No. | Size | Price/pk. |
|-----------|---------|-----------|
| SCW0547-4 | 4"L | \$11.75 |
| SCW5601-3 | 3-1/4"L | 12.50 |



FILLET KNIFE

High carbon/no stain blade with molded white polypropylene handle. 8"L. Fillet/narrow stiff. NSF Certified.

W5614-8 \$10.00/ea.



WIDE SANDWICH KNIFE

High carbon/no stain serrated edged blade with molded white polypropylene handle. 8"L. NSF Certified.

W5610-8E \$18.00/ea.



WIDE COOK'S KNIVES

High carbon/no stain blade with molded white polypropylene handle. NSF Certified.

| Item No. | Size | Price/ea. |
|----------|------|-----------|
| W5610-10 | 10" | \$21.50 |
| W5610-12 | 12" | 24.50 |



SHARPENING STEEL

Round/regular cut. Molded white polypropylene handle. 14"L. NSF Certified.

W3303-14 \$20.00/ea.



PARING KNIFE

4", high carbon, stain-resistant, Japanese steel blade with non-stick coating, ergonomic ABS handle and sheath. Blue

M33911B \$4.00/ea.



BREAD KNIFE

High carbon/no stain serrated edged and curved blade with molded white polypropylene handle. 10"L. NSF Certified.



W5621-10E \$11.75/ea.



SLICER KNIVES

High carbon/no stain blade with molded white polypropylene handle. NSF Certified.

| Item No. | Size | Price/ea. |
|-----------|--------------------|-----------|
| W5627-10 | 10" | \$13.75 |
| W5627-12E | 12", Serrated edge | 15.75 |



PLASTIC DOUGH SCRAPERS

One-piece, injection molded polypropylene construction. Made from FDA-approved materials.

Available in Green, Blue, Red, White and Yellow.



| Item No. | Size | Price/ea. |
|----------|-------------|-----------|
| 6960 | 9" x 5-1/4" | \$10.00 |

SLOTTED TURNER

Flexible blade, high temperature, 3-1/2" x 12" - Plastic
3-1/2" x 11-1/2" - Stainless Steel
Colors for Plastic: Black, Blue, Red, Green, Gray, Purple and Brown.

| Item No. | Description | Price/ea. |
|----------|---------------|-----------|
| M35110 | Plastic/430°F | \$4.00 |
| M33183 | Metal/450°F | 15.00 |



FIRMGRIP™ HAND HELD KNIFE SHARPENER

E5698 \$14.00/ea.



ACCUSHARP® KNIFE SHARPENER

Diamond honed tungsten carbide sharpening blades for an excellent sharpening finish. Durable plastic with tough, polypropylene full finger guard.



280-1216 \$9.00/ea.





ADVANCED FORGED PROFESSIONAL CUTLERY

One piece full tang steel forged from high carbon German steel. Unique solid ErGo POM handle. NSF Listed



| Item No. | Description | Price/ea. |
|----------|--------------------------|-----------|
| KFP-35 | 3-1/2" Paring Knife | \$5.75 |
| KFP-50 | 5" Utility Knife | 7.25 |
| KFP-60 | 6" Chef Knife | 11.50 |
| KFP-61 | 6" Boning Knife | 8.25 |
| KFP-70 | 7" Santoku Knife | 11.50 |
| KFP-80 | 8" Chef Knife | 14.00 |
| KFP-81 | 8" Slicer | 10.50 |
| KFP-82 | 8" Bread Knife | 10.50 |
| KFP-83 | 8" Offset Bread Knife | 11.50 |
| KFP-100 | 10" Chef Knife | 15.75 |
| KFP-101 | 10" Slicer, Granton | 14.50 |
| KFP-102 | 10" Fish Slicer, Granton | 14.50 |
| KFP-120 | 12" Chef Knife | 18.25 |

CUTTING BOARD BRUSHES

| Item No. | Length | Price/ea. |
|----------|--------------|-----------|
| CBR-BU | 6.5", Blue | \$2.00 |
| CBR-GR | 6.5", Green | 2.00 |
| CBR-RD | 6.5", Red | 2.00 |
| CBR-YL | 6.5", Yellow | 2.00 |
| CBR-WT | 6.5", White | 2.00 |
| CBR-BN | 6.5", Brown | 2.00 |



COLORED CUTTING BOARDS

NSF Certified cutting surfaces, embossed with the NSF seal. Colors: Red, Green, Brown, Blue, Yellow.



| Item No. | L x W x H | Price/ea. |
|----------|------------------|-----------|
| 434 | 15" x 20" x 1/2" | \$15.75 |
| 435 | 18" x 24" x 1/2" | 23.00 |

WHITE CUTTING BOARDS

White NSF Certified cutting surfaces, embossed with the NSF seal.



| Item No. | L x W x H | Price/ea. |
|----------|------------------|-----------|
| 4321 | 15" x 20" x 1/2" | \$15.00 |
| 4322 | 18" x 24" x 1/2" | 22.00 |



ELECTRIC CAN OPENERS

Durable stainless steel construction. Replaceable knife and gear. 115V.



| Item No. | Description | Price/ea. |
|----------|-----------------|-----------|
| 203 | Two speed motor | \$725.25 |
| 266 | One speed motor | 704.50 |



CUT-N-CARRY® CUTTING BOARD SETS

Color-coded boards with Food Safety hook for sanitary transport and storage. All sets include free Smart Chart.



| Item No. | L x W x H | Price/Set. |
|------------|------------------|------------|
| CB1520QS* | 15" x 20" x 1/2" | \$83.50 |
| CB1824QS* | 18" x 24" x 1/2" | 120.00 |
| CB1520KC** | 15" x 20" x 1/2" | 123.50 |
| CB1824KC** | 18" x 24" x 1/2" | 176.50 |

*Set of 4 boards (Red, Green, White, Yellow)

**Set of 6 boards (Red, Green, White, Yellow, Blue, Brown)

KLEVER KUTTER™ BOX OPENER

Prevent costly injury and damage to product. Constructed of high density plastic with stainless steel safety blade.

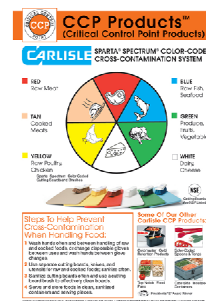


KK401 \$4.00/ea.

WALL CHART

Spectrum® Color-Coded Cross-Contamination Wall Chart. Laminated, English and Spanish.

10889WC00 \$6.00/ea.



CUTTING BOARD SCAPER

Refinisher tool, one-piece plastic handle, stainless steel replaceable blade, white.



| Item No. | Price/ea. |
|----------|-----------|
| 1178902 | \$30.75 |



PASTRY BRUSHES

Made of 100% soak proof nylon bristles and plastic ferrule.

| Item No. | Description | Price/ea. |
|----------|--------------|-----------|
| 40391 | 2" Wide flat | \$7.75 |
| 40392 | 3" Wide flat | 9.50 |



HIGH HEAT PASTRY BRUSH

3", heat resistant up to 500° F, molded into-the-handle hook, stain resistant, dishwasher safe, silicone.

40405 \$5.50/ea.



TIMERS

| Item No. | Description | Price/ea. |
|----------|--|-----------|
| 151-1059 | 60 minute timer, long ring | \$12.50 |
| 151-1034 | 60 minute timer, continuous beep | 51.50 |
| 151-7500 | 4-in-1™ digital timer, 10 hr. countdown | 42.50 |
| 151-7601 | Digital timer, 23 hr./59 min. countdown/up | 21.00 |

ONE PIECE DOUGH CUTTERS

| Item No. | Size | Price/ea. |
|----------|------|-----------|
| C200 | 2" | \$30.75 |



REVOLVING DOUGH CUTTERS

Designed for durability, easy sanitation and positive dough release. Aluminum construction.



| Item No. | Cups Width | Size | Price/ea. |
|----------|------------|--------|-----------|
| 832310A | 2 | 2-1/2" | \$472.50 |
| 832510A | 2 | 3-3/4" | 472.50 |
| 832610A | 2 | 3" | 472.50 |
| 832710A | 2 | 3-1/4" | 472.50 |
| 832530A | 6 | 2-3/4" | 1,444.75 |
| 832535A | 7 | 2-3/4" | 1,569.75 |
| 832630A | 6 | 3" | 1,444.75 |
| 832635A | 7 | 3" | 1,569.75 |



HARDWOOD ROLLING PINS

Contains polycarbonate ball bearings. 2-3/4" diameter barrel.



| Item No. | Size | Price/ea. |
|----------|------|-----------|
| ROP-13 | 13" | \$9.25 |
| ROP-15 | 15" | 9.75 |
| ROP-18 | 18" | 12.50 |

ALUMINUM ROLLING PINS

Contains carbon steel ball bearings. 3-1/2" diameter barrel.



| Item No. | Size | Price/ea. |
|----------|------|-----------|
| 3633 | 13" | \$27.50 |
| 3635 | 15" | 30.00 |
| 3638 | 18" | 32.00 |



POLYETHYLENE ROLLING PINS

Contains no unsanitary bearings or barrel cavities that can cause cross-contamination. NSF Listed.

| Item No. | Size | Price/ea. |
|----------|------|-----------|
| RP15 | 15" | \$104.00 |
| RP18 | 18" | 115.25 |



BELSHAW PANCAKE DEPOSITOR

Designed to deposit the same size and weight pancake every time. 8 easily-adjusted weight settings give deposit weights of 1/2 - 3 oz.

K-PANCAKE \$132.00/ea.



PANCAKE DISPENSER

13" Pancake Dispenser, 8 portion control dial settings. Deposits 1/2 to 3 oz. portions.

| | | |
|-----------|-----------------|---------|
| PCD-13 | Aluminum | \$88.50 |
| PCD-13/SS | Stainless Steel | 95.25 |





CAMWEAR® MEASURING CUPS

Made of crystal clear polycarbonate. Graduations are molded into the cups so they will not wash or scratch off. Dishwasher safe. NSF.



| Item No. | Description | Price/ea. |
|----------|-------------|-----------|
| 25MCCW | 1 Cup | \$4.00 |
| 50MCCW | 1 Pint | 7.25 |
| 100MCCW | 1 Quart | 8.00 |
| 200MCCW | 2 Quart | 11.00 |
| 400MCCW | 4 Quart | 12.00 |



DREDGE/SHAKER

Polycarbonate, 10 oz. with snap tight lid.



| Item No. | Description | Price/ea. |
|----------|-------------------|-----------|
| 166C | Rose lid/medium | \$3.50 |
| 166B | Green lid/fine | 3.50 |
| 166D | Yellow lid/cheese | 3.50 |

DREDGES

These dredges feature seamless construction and wide screw tops for easy lifting. Without handle. 10 oz. NSF Listed.



| Item No. | Description | Price/ea. |
|----------|-----------------|-----------|
| 7470 | Aluminum | \$2.75 |
| 7473 | Stainless steel | 2.75 |

MEASURING SPOON SET

Heavy stainless steel 4 piece set. Spoon sizes: 1/4 tsp., 1/2 tsp., 1 tsp., and 1 Tbsp



746108 \$3.00/set

MEASURING CUP SET

Made of stainless steel, this 4 piece set has the following cup capacities: 1/4, 1/3, 1/2 and 1 cup. Graduated inside and out, solid handles.



746107 \$4.00/set

SAF-T-ICE TOTE

6 gallon, polycarbonate, rubber handle, with tri-grip feature, includes Saf-T-Ice HACCP hanger for elevation to waist level, NSF



SI6000 \$41.00/ea

BAKER'S MEASURES

| Item No. | Description | Price/ea. |
|----------|-----------------------|-----------|
| AM-05 | 1/2 qt./Aluminum | \$3.50 |
| AM-1 | 1 qt./Aluminum | 5.00 |
| AM-2 | 2 qt./Aluminum | 7.50 |
| AM-4 | 4 qt./Aluminum | 12.75 |
| UC-4 | 4 qt./Stainless Steel | 24.50 |



CAST ALUMINUM SCOOPS

Heavy-duty, aluminum alloy.



| Item No. | Description | Price/ea. |
|----------|-------------|-----------|
| AS-5 | 5 oz. | \$1.50 |
| AS-12 | 12 oz. | 2.25 |
| AS-24 | 24 oz. | 3.75 |
| AS-38 | 38 oz. | 5.00 |
| AS-58 | 58 oz. | 7.00 |
| AS-85 | 85 oz. | 9.00 |

PLASTIC SCOOP

Plastic, 64 oz. capacity. White



PS-64 \$3.75/ea.

REMCO MEGA SCOOP

One-piece, injection molded polypropylene construction. 128 oz. Available in Red, Blue, Yellow, Orange, White and Green.



6550 \$10.50/ea.



SAF-T-ICE SCOOP CADDY

Durable plastic construction and dishwasher safe. Includes brackets with self-adhesive strips or screws for easy installation and removal for daily cleaning. Blue.



SI2000 \$28.00/ea.



CAMWEAR SCOOPS

Clear. NSF.

| Item No. | Capacity | Price/ea. |
|----------|----------|-----------|
| SCP6CW | 6 oz. | \$3.50 |
| SCP12CW | 12 oz. | 3.75 |
| SCP24CW | 24 oz. | 4.75 |
| SCP64CW | 64 oz. | 6.75 |



GRATERS

Stainless steel.

| Item No. | L x W x H | Price/ea. |
|----------|--------------|-----------|
| SQG-1 | 3" x 4" x 9" | \$4.50 |
| SQG-4 | 4" x 4" x 9" | 4.75 |



ALUMINUM COLANDERS

Heavy gauge aluminum alloy.

| Item No. | Capacity | Price/ea. |
|----------|----------|-----------|
| ALC-8 | 8 qt. | \$12.25 |
| ALC-11 | 11 qt. | 18.50 |
| ALC-16 | 16 qt. | 29.50 |



SQUARE MESH SKIMMER

Nickel plated. Fine mesh.
6-1/2"W x 6-1/2"W x 14"L

571924 \$3.50/ea.



ROUND MESH SKIMMER

Round, Nickel plated Wire.

| Item No. | Capacity | Price/ea. |
|----------|----------|-----------|
| SC-7R | 7" x 13" | \$2.50 |
| SC-8R | 8" x 13" | 2.50 |
| SC-9R | 9" x 13" | 3.00 |



CHINA CAP STRAINERS

Made from 18-8 stainless steel.

| Item No. | Description | Price/ea. |
|----------|-------------|-----------|
| 3872 | 12" Coarse | \$25.50 |
| 3852 | 12" Fine | 25.50 |



CHINA CAP STRAINER

5-1/4" qt., 10-3/4" dia., 1/16" perforations, with hooks.

| Item No. | Price/ea. |
|----------|-----------|
| 4700 | \$66.00 |



INVERTATOP™ SQUEEZE DISPENSER

16 oz. capacity. ValveTop™ 53mm dual opening. NSF.

16SV \$2.50/ea.



PLASTIC SQUEEZE BOTTLES



| Item No. | Capacity | Price/ea. |
|----------|---------------|-----------|
| 1100 | 8 oz./Red | \$1.00 |
| 1101 | 8 oz./Yellow | 1.00 |
| 1102 | 8 oz./Clear | 1.00 |
| 2101 | 12 oz./Red | 1.25 |
| 2102 | 12 oz./Yellow | 1.25 |
| 2103 | 12 oz./Clear | 1.25 |
| 2401 | 24 oz./Red | 1.75 |
| 2402 | 24 oz./Yellow | 1.75 |
| 2403 | 24 oz./Clear | 1.75 |



MIXING BOWLS

18-8 stainless steel. Mirror finish inside and outside of bowl.

| Item No. | Capacity | Price/ea. |
|----------|----------|-----------|
| 7202 | 1.5 qt. | \$2.00 |
| 7203 | 3 qt. | 2.75 |
| 7204 | 4 qt. | 3.50 |
| 7205 | 5 qt. | 3.75 |
| 7208 | 8 qt. | 5.50 |
| SBL-16 | 13 qt. | 12.00 |
| SLB-20 | 16 qt. | 13.00 |
| 7220 | 20 qt. | 14.00 |



HEAVY-DUTY MIXING BOWLS

Heavy gauge 18-8 stainless steel. Satin finish interior. Stain and scratch resistant.



| Item No. | Capacity | Dia. x Depth | Price/ea. |
|----------|----------|-------------------|-----------|
| 79300 | 30 qt. | 21-5/8" x 7-7/8" | \$143.00 |
| 79450 | 45 qt. | 25-1/4" x 8-1/2" | 199.50 |
| 79800 | 80 qt. | 30-5/8" x 11-1/2" | 353.50 |



HEAVY DUTY MOBILE MIXING BOWL STAND

Mobile Mixing Stands make large batch food prep efficient, while heavy-duty construction stands up to the toughest environments. 4" heavy-duty casters.

| Item No. | Description | Price/ea. |
|----------|-------------------|-----------|
| 712 | Holds 30 qt. bowl | \$890.50 |
| 713 | Holds 80 qt. bowl | 1,057.50 |



STOCK POTS

Heavy-gauge, riveted stock pot.
Aluminum. NSF Listed.



| Item No. | Capacity | Price/ea. |
|----------|----------|-----------|
| APT-12 | 12 qt. | \$23.50 |
| APT-16 | 16 qt. | 29.75 |
| APT-20 | 20 qt. | 32.00 |
| APT-24 | 24 qt. | 34.25 |
| APT-32 | 32 qt. | 40.00 |
| APT-40 | 40 qt. | 50.75 |
| APT-60 | 60 qt. | 75.00 |
| APT-80 | 80 qt. | 89.25 |

COVER

| Item No. | Fits | Price/ea. |
|----------|-------------|-----------|
| APTC-10 | 12 & 16qt. | \$5.00 |
| APTC-20 | 20 & 24 qt. | 6.75 |
| APTC-40 | 32 & 40 qt. | 11.00 |
| APTC-60 | 60 qt. | 13.00 |
| APTC-80 | 80 qt. | 16.00 |

winco TAPERED SAUCE PANS

Natural finish pans
constructed of 3003 aluminum,
3.5 mm thickness. NSF Listed.



| Item No. | Capacity | Price/ea. |
|----------|-----------|-----------|
| ASP-1 | 1-1/2 qt. | \$7.50 |
| ASP-2 | 2-1/2 qt. | 9.50 |
| ASP-3 | 3-3/4 qt. | 10.50 |
| ASP-4 | 4-1/4 qt. | 12.50 |
| ASP-5 | 5 qt. | 14.25 |
| ASP-7 | 7 qt. | 15.75 |
| ASP-10 | 10 qt. | 20.00 |

COVER

| Item No. | Fits | Price/ea. |
|----------|-----------|-----------|
| ASP-1C | 1-1/2 qt. | \$2.00 |
| ASP-2C | 2-1/2 qt. | 3.00 |
| ASP-3C | 3-3/4 qt. | 3.50 |
| ASP-4C | 4-1/4 qt. | 4.25 |
| ASP-5C | 5 qt. | 4.50 |
| ASP-7C | 7 qt. | 5.25 |
| ASP-10C | 10 qt. | 6.00 |



RAPI-KOOL®

Chills foods safely and easily from the
inside-out. Durable and dishwasher
safe. 128 oz.

| Item No. | Price/ea. |
|----------|-----------|
| RCU64V2 | \$28.75 |
| RCU128V2 | 38.00 |



LARGE CROWN MUFFIN PANS

Aluminum with silicone glaze coating.



| Item No. | Description | Price/ea. |
|----------|--------------------------|-----------|
| 903555 | 12 Cups, 3-1/2" diameter | \$56.25 |
| 904555 | 20 Cups, 3-1/2" diameter | 64.50 |
| 905435 | 15 Cups, 4-1/8" diameter | 67.75 |

MUFFIN PAN

Aluminum. 3 oz. capacity.



| Item No. | Description | Price/ea. |
|----------|------------------------|-----------|
| AMF-12 | 12 Cups, 10-3/4" x 14" | \$9.00 |
| AMF-24 | 24 Cups, 20-1/2" x 14" | 19.00 |

PULLMAN BREAD PANS

Aluminized steel w/silicone glaze.
Heavy gauge steel frame.



| Item No. | Description | Price/set |
|----------|----------------------------------|-----------|
| 904635 | 3 pan, 13" x 4" x 4"H | \$55.75 |
| 904645 | Cover for 904635 | 31.25 |
| 904245 | 4 pan, 8-1/2" x 4-1/2" x 2-3/4"H | 42.00 |
| 904585 | 4 pan, 8-1/2" x 5-3/4" x 3"H | 48.50 |



PAN GRATES



| Item No. | Description | Price/ea. |
|----------|--------------|-----------|
| WPG-510 | 5" x 10-1/2" | \$2.00 |
| WPG-810 | 7-3/4" x 10" | 2.50 |
| WPG-1018 | 10" x 18" | 4.00 |
| WPG-1624 | 16" x 24" | 10.00 |

FRY BASKETS



| Item No. | Handle, Size | Price/ea. |
|----------|---------------------------|-----------|
| FB-126PH | 12-7/8" x 6-1/2" x 5-1/8" | \$14.00 |
| FB-135PH | 13-1/4" x 5-3/4" x 5-3/4" | 14.00 |

SAUCE POTS

Heavy-duty. Aluminum.



| Item No. | Capacity | Price/ea. |
|----------|----------|-----------|
| 65814 | 14 qt. | \$44.50 |
| 65820 | 20 qt. | 51.50 |
| 65826 | 26 qt. | 61.25 |
| 65834 | 34 qt. | 70.50 |



COVER

| Item No. | Fits | Price/ea. |
|----------|------------|-----------|
| 6521 | 14 qt. | \$7.25 |
| 6533 | 20, 26 qt. | 9.75 |
| 6561 | 34 qt. | 13.25 |

ROAST PANS

Heavy Duty Roast Pan with riveted drop handles, (2) steel reinforced bands, seamless rawn sanitary open bead.



| Item No. | Description | Price/ea. |
|----------|-------------|-----------|
| 60345 | Bottom | \$114.75 |
| 60344 | Cover | 114.75 |



SHEET PAN COVER

Snap-on-fit, dishwasher safe, polypropylene construction, NSF

| Item No. | Description | Price/ea. |
|----------|--------------------|-----------|
| 90PSPCFL | Fits Full Size Pan | \$11.50 |
| 90PSPCHF | Fits Half Size Pan | 7.00 |



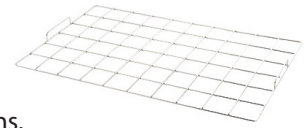
SHEET PANS

Full size, 18" x 26" x 1"
Half size 18" x 13" x 1"

| Item No. | Description | Price/ea. |
|------------|--------------------------|-----------|
| ALXP-1826 | Full/18 gauge | \$7.50 |
| ALXP-2618H | Full/16 gauge | 10.75 |
| ALXP-1200 | Full/12 gauge, open bead | 17.50 |
| ALXP-1813H | Half/18 gauge | 5.50 |

CAKE MARKER

Fits full size sheet pans. Marks cake to ensure uniform portions.



| Item No. | Description | Price/ea. |
|----------|-------------|-----------|
| CKM-68 | 48 Cut | \$20.00 |
| CKM-69 | 54 Cut | 20.00 |
| CKM-610 | 60 Cut | 20.00 |



BAKE PAN

Full size Bake Pan without handles

| Item No. | Description | Price/ea. |
|----------|--------------------|-----------|
| ABP-1826 | 18" x 26" x 2-1/4" | \$36.50 |



BAKE PANS

FULL SIZE BAKE PAN, NO HANDLES



| Item No. | Description | Price/ea. |
|----------|---------------------------|-----------|
| 601922 | 18" L x 26" W x 2-1/4" H, | \$47.00 |



SUPER PAN II® TRANSPORT PANS

Heavy-duty 20 gauge, 300 series stainless steel. Stepped shoulder designed pans with matching covers seal tightly to prevent seepage. NSF Listed.

| Item No. | Description | Price/ea. |
|----------|------------------------|-----------|
| 30025 | Full size, 2-1/2" deep | \$48.00 |
| 30045 | Full size, 4" deep | 55.25 |
| 30065 | Full size, 6" deep | 66.00 |
| 30225 | Half size, 2-1/2" deep | 24.50 |
| 30245 | Half size, 4" deep | 33.00 |
| 30265 | Half size, 6" deep | 40.50 |

SUPER PAN II® TRANSPORT PAN COVERS

Heavy-duty 20 gauge, 18-8 stainless steel. Seal securely to prevent spillage.

| Item No. | Description | Price/ea. |
|----------|-------------|-----------|
| 70005 | Full size, | \$28.00 |
| 75025 | Half size | 16.25 |



STEAM TABLE PANS

Stainless steel. Anti-jamming, NSF.



22 Gauge

| Item No. | Description | Price/ea. |
|----------|--------------------|-----------|
| 22002 | Full size, 2-1/2"D | \$15.25 |
| 22004 | Full size, 4"D | 21.25 |
| 22006 | Full size, 6"D | 28.50 |
| 22122 | Half size, 2-1/2"D | 9.75 |
| 22124 | Half size, 4"D | 13.00 |
| 22126 | Half size, 6"D | 18.25 |

24 Gauge

| Item No. | Description | Price/ea. |
|----------|-------------------|-----------|
| 5781302 | 1/3 size, 2-1/2"D | \$7.00 |
| 5781304 | 1/3 size, 4"D | 8.75 |
| 5781306 | 1/3 size, 6"D | 13.25 |
| 5781402 | 1/4 size, 2-1/2"D | 5.50 |
| 5781404 | 1/4 size, 4"D | 7.50 |
| 5781406 | 1/4 size, 6"D | 11.75 |
| 5781602 | 1/6 size, 2-1/2"D | 4.50 |
| 5781604 | 1/6 size, 4"D | 6.25 |
| 5781606 | 1/6 size, 6"D | 8.75 |



STEAM TABLE PAN COVERS

High quality, 22 gauge stainless steel with recessed handles.

| Item No. | Description | Price/ea. |
|----------|--------------------|-----------|
| 575528 | Full size, Solid | \$14.25 |
| 575529 | Full size, Slotted | 14.25 |
| 575538 | Half size, Solid | 7.50 |
| 575539 | Half size, Slotted | 7.50 |



PERFORATED STEAM TABLE PAN

24 gauge stainless steel. Reinforced edge, NSF.



| Item No. | Description | Price/ea. |
|----------|--------------------|-----------|
| 578012 | Full size, 2-1/2"D | \$19.50 |
| 578014 | Full size, 4"D | 24.75 |
| 578016 | Full size, 6"D | 35.50 |

STEAM TABLE PAN COVERS

Aluminum covers, solid. Two half size covers fit full size pan.



| Item No. | Description | Price/ea. |
|----------|------------------|-----------|
| 68020 | Full size, Solid | \$21.00 |
| 68010 | Half size, Solid | 17.25 |



ADAPTER BARS

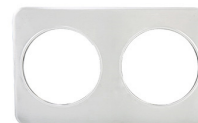
Stainless steel.

| Item No. | Size | Price/ea. |
|----------|------|-----------|
| ADB-12 | 12"D | \$2.00 |
| ADB-20 | 20"D | 2.75 |



ADAPTER PLATES

Stainless steel.



| Item No. | Size | Price/ea. |
|----------|------------------|-----------|
| ADP-808 | (2) 8-3/8" holes | \$11.75 |
| ADP-666 | (3) 6-3/8" holes | 11.75 |

INSETS

Heavy weight stainless steel. Mirror finish.

| Item No. | Size | Price/ea. |
|-----------|---------|-----------|
| INS-2.5 | 2.5 qt. | \$5.00 |
| INS-4.0 | 4 qt. | 7.00 |
| INS-7.0M | 7 qt. | 9.25 |
| INS-11.0M | 11 qt. | 13.00 |



INSET COVERS

| Item No. | Cover For | Price/ea. |
|----------|-----------|-----------|
| INSC-2.5 | 2.5 qt. | \$1.50 |
| INSC-4 | 4 qt. | 2.25 |
| INSC-7M | 7 qt. | 3.00 |
| INSC-11M | 11 qt. | 4.50 |



VEGETABLE INSET COVERS

Hinged.

| Item No. | Cover For | Price/ea. |
|----------|-----------|-----------|
| INSH-7 | 7 qt. | \$6.50 |
| INSH-11 | 11 qt. | 9.00 |





SPILLAGE PANS

Heavy-duty 18-8 stainless steel.
Full size



| Item No. | Size | Price/ea. |
|----------|------|-----------|
| C-WPF | 4"D | \$15.75 |
| C-WPP | 6"D | 29.50 |

GLADIATOR™ FRY PANS

Natural finish fry pans with permanent non-slip heat resistant handles. 3003 aluminum, 3.5mm thickness.



| Item No. | Size | Price/ea. |
|-----------|------|-----------|
| AFP-10A-H | 10"D | \$12.00 |
| AFP-12A-H | 12"D | 15.75 |
| AFP-14A-H | 14"D | 20.75 |

FRY PANS

Fry Pan, 3003 aluminum, 3.5mm thickness, Excalibur™ coating, with silicone sleeves.



| Item No. | Size | Price/ea. |
|------------|------|-----------|
| AFP-10XC-H | 10"D | \$15.50 |
| AFP-12XC-H | 12"D | 21.75 |
| AFP-14XC-H | 14"D | 28.00 |



CAMSQUARE FOOD STORAGE CONTAINERS - POLYCARBONATE



Made of crystal clear, virtually unbreakable polycarbonate. Withstands temperature ranges from -40°F to 210°F, allowing use in refrigerators or freezers. NSF.

| Item No. | Capacity | Price/ea. |
|----------|----------|-----------|
| 2SFSCW | 2 qt. | \$4.25 |
| 4SFSCW | 4 qt. | 6.50 |
| 6SFSCW | 6 qt. | 8.25 |
| 8SFSCW | 8 qt. | 9.75 |
| 12SFSCW | 12 qt. | 13.00 |
| 18SFSCW | 18 qt. | 19.00 |
| 22SFSCW | 22 qt. | 24.25 |

FALSE BOTTOMS

18/8 stainless steel. 8-3/4" x 16-3/4".



5329 \$8.50/ea.



CEREAL DISPENSER

11.6 qt. capacity, removable stainless steel top, polycarbonate clear cylinder. 14"L x 10-5/8"W x 30"H.



575161 \$139.25/ea.

CEREAL DISPENSER

Clear acrylic container. Non-jamming rubber paddle operation to dispense cereal into a bowl. (3) 1 gallon cylinders.



CRD-3 \$190.50/ea.



CAMSQUARE FOOD STORAGE CONTAINERS - POLYETHYLENE

Impact, stain and chemical resistant material. Natural white polyethylene provides some ease in identifying and inventorying.



| Item No. | Capacity | Price/ea. |
|----------|----------|-----------|
| 2SFSP | 2 qt. | \$3.25 |
| 4SFSP | 4 qt. | 4.50 |
| 6SFSP | 6 qt. | 5.50 |
| 8SFSP | 8 qt. | 6.50 |
| 12SFSP | 12 qt. | 9.25 |
| 18SFSP | 18 qt. | 12.50 |
| 22SFSP | 22 qt. | 15.25 |

CAMSQUARE CONTAINER COVERS

Fits Camwear® and poly Camsquare containers. NSF.

| Item No. | Description | Price/ea. |
|----------|--|-----------|
| SFC2 | Fits 2 qt. and 4 qt., Kelly Green | \$2.00 |
| SFC6 | Fits 6 qt. and 8 qt., Winter Rose | 2.50 |
| SFC12 | Fits 12 qt., 18 qt., 22 qt., Midnight Blue | 3.50 |





CAMWEAR® FOOD STORAGE BOXES

Polycarbonate stands up to tough treatment, withstanding temperature extremes from -40°F to 210°F. Clear. NSF.



18" x 26"

| Item No. | Description | Price/ea. |
|----------|-------------------|-----------|
| 18263CW | 3-1/2"H, 5 gallon | \$20.25 |
| 18266CW | 6"H, 8.75 gallon | 26.25 |
| 18269CW | 9"H, 13 gallon | 34.50 |
| 182615CW | 15"H, 22 gallon | 49.50 |

12" x 18"

| Item No. | Description | Price/ea. |
|----------|----------------------|-----------|
| 12183CW | 3-1/2"H, 1.75 gallon | \$11.25 |
| 12186CW | 6"H, 3 gallon | 14.00 |
| 12189CW | 9"H, 4.75 gallon | 19.00 |

CAMWEAR FLAT LIDS

For use with polycarbonate storage boxes. Clear. NSF.

| Item No. | Description | Price/ea. |
|----------|-------------|-----------|
| 1826CCW | 18" x 26" | \$13.75 |
| 1218CCW | 12" x 18" | 7.00 |

POLYETHYLENE ROUND CONTAINERS

An economical solution to storage and transportation needs. White. NSF.



| Item No. | Capacity | Price/ea. |
|----------|----------|-----------|
| RFS1 | 1 qt. | \$2.25 |
| RFS2 | 2 qt. | 2.50 |
| RFS4 | 4 qt. | 2.75 |
| RFS6 | 6 qt. | 3.25 |
| RFS8 | 8 qt. | 4.25 |
| RFS12 | 12 qt. | 7.75 |
| RFS18 | 18 qt. | 9.25 |
| RFS22 | 22 qt. | 11.00 |

ROUND LIDS

For use with polyethylene round containers. White. NSF.

| Item No. | Capacity | Price/ea. |
|----------|------------------------|-----------|
| RFSC1 | Fits 1 qt. | \$1.00 |
| RFSC2 | Fits 2 qt. and 4 qt. | 1.25 |
| RFSC6 | Fits 6 qt. and 8 qt. | 1.50 |
| RFSC12 | Fits 12, 18 and 22 qt. | 3.00 |

POLYETHYLENE FOOD STORAGE BOXES

A great value in impact and scuff resistant protection for wet or dry storage. White. NSF.



18" x 26"

| Item No. | Description | Price/ea. |
|----------|-------------------|-----------|
| 18263P | 3-1/2"H, 5 gallon | \$14.75 |
| 18266P | 6"H, 8.75 gallon | 19.50 |
| 18269P | 9"H, 13 gallon | 25.25 |
| 182615P | 15"H, 22 gallon | 36.00 |

12" x 18"

| Item No. | Description | Price/ea. |
|----------|----------------------|-----------|
| 12183P | 3-1/2"H, 1.75 gallon | \$9.00 |
| 12186P | 6"H, 3 gallon | 11.25 |
| 12189P | 9"H, 4.75 gallon | 15.00 |

POLYETHYLENE FLAT LIDS

For use with polyethylene storage boxes. White. NSF.

| Item No. | Description | Price/ea. |
|----------|-------------|-----------|
| 1826CP | 18" x 26" | \$11.50 |
| 1218CP | 12" x 18" | 7.00 |

CAMWEAR POLYCARBONATE ROUND CONTAINERS

The round shape promotes proper air circulation. The durable polycarbonate construction is virtually unbreakable. Plus, it withstands temperatures of -40°F to 210°F. Clear. NSF.

| Item No. | Capacity | Price/ea. |
|----------|----------|-----------|
| RFSCW1 | 1 qt. | \$3.25 |
| RFSCW2 | 2 qt. | 4.50 |
| RFSCW4 | 4 qt. | 7.75 |
| RFSCW6 | 6 qt. | 9.00 |
| RFSCW8 | 8 qt. | 11.25 |
| RFSCW12 | 12 qt. | 16.00 |
| RFSCW18 | 18 qt. | 21.75 |
| RFSCW22 | 22 qt. | 25.00 |



ROUND COVERS

For use with Camwear® round containers. Clear. NSF.

| Item No. | Capacity | Price/ea. |
|----------|------------------------|-----------|
| RFSCWC1 | Fits 1 qt. | \$1.25 |
| RFSCWC2 | Fits 2 qt. and 4 qt. | 2.25 |
| RFSCWC6 | Fits 6 qt. and 8 qt. | 2.75 |
| RFSCWC12 | Fits 12, 18 and 22 qt. | 6.25 |

SEAL COVERS

For use with Camwear® round containers. Translucent.

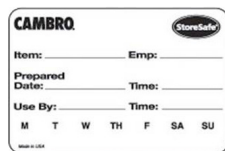
| Item No. | Capacity | Price/ea. |
|-----------|------------------------|-----------|
| RFS1SCPP | Fits 1 qt. | \$1.25 |
| RFS2SCPP | Fits 2 qt. and 4 qt. | 1.75 |
| RFS6SCPP | Fits 6 qt. and 8 qt. | 1.75 |
| RFS12SCPP | Fits 12, 18 and 22 qt. | 3.75 |



STORESAFE®

FOOD ROTATION LABELS

2" x 3" label size. 100% biodegradable.
6 rolls, 250 labels per roll.



23SLB6250 \$99.00/pk.



REFRIGERATOR/FREEZER THERMOMETER

Temperature range -40°F to +80°F.
Horizontal glass tube. Stands or mounts permanently. NSF Certified.



335-01-1 \$4.50/ea.

REFRIGERATOR/FREEZER THERMOMETER

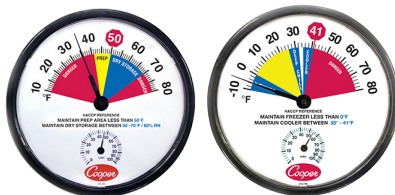
Temperature range -20°F to 80°F. HACCP reference dial. NSF Certified. Hangs or stands.



25HP-01-1 \$5.00/ea.

ENVIRONMENTAL THERMOMETERS

Wall mount, dial type thermometer. 12" diameter.



| Item No. | Description | Price/ea. |
|-----------|-----------------------|-----------|
| 212-158-8 | Dry Storage/Prep Area | \$32.25 |
| 212-159-8 | Cooler/Freezer | 32.25 |

WALL THERMOMETER

Perfect for storage areas, refrigerators, and walk-in freezers. 12" diameter dial type with horizontal numbers.
-40°F to 120°F.



212-150-8 \$30.25/ea.

ROASTING THERMOMETER

Stainless steel construction. Temperature range 130°F to 190°F. 2-1/2" diameter dial with 6" stem. NSF Certified.



323-0-1 \$8.75/ea.

POCKET THERMOMETER

1" dial, red sleeve.
0°F to 220°F. NSF.



THP-220 \$3.25/ea.

BI-METAL STEM TEST THERMOMETER

The 1" dial, 5" stem, bi-metal pocket tests have a magnifying lens for easy reading and a combination pocket sheath and calibration tool. 0°F to 220°F. NSF Certified.



1246-02-1 \$6.00/ea.

HACCP OVEN THERMOMETER

100°F to 600°F. Hangs or stands. HACCP reference dial. NSF Certified.



24HP-01-1 \$5.00/ea.

HACCP PROOFING/HOLDING CABINET THERMOMETER

100°F to 175°F. Hangs or stands. HACCP reference dial. NSF Certified.



26HP-01-1 \$5.00/ea.

GUN-STYLE INFRARED THERMOMETER WITH PROBE JACK

Temperature range of -76°F - 932°



412-0-8 \$131.75/ea.

WATERPROOF DIGITAL QUICK-READ THERMOMETER

5" stem length, waterproof, data hold, recalibratable. -40°F to 450°F. NSF.



DTQ450X \$13.00/ea.

INFRARED/THERMOCOUPLE PROBE THERMOMETER

Measures both surface and internal temperatures. IR thermometer range: -67°F to +482°F. Probe range: -67°F to +626°F. Waterproof and shatterproof.



INTP626X \$65.00/ea.



THERMOCOUPLE THERMOMETER WITH PROBE

Folding Thermocouple, -58°F to 572°F.
Field calibration, water resistant,
shatterproof, max/min, extra big digit,
on/off button, auto-off temperature
guide on thermometer, s/s probe.

TCT572-B \$46.25/ea.



ANTIBACTERIAL PROBE WIPES

200 single use wipes per box.

PW200 \$5.50/pack



PROACCURATE® REFRIGERATOR/ FREEZER THERMOMETER

Temperature range of -40°F to 120°F.
Color coded scale. NSF.

EFG120 \$2.25/ea.



PROACCURATE® THIN TIP THERMOMETER

Easy to read LCD display with a hold
feature. Temperature range of
-40°F to 450°F. 2.75" stem length. NSF.

| Item No. | Description | Price/ea. |
|----------|-------------|-----------|
| DTT450 | Yellow | \$13.00 |
| DTT450-B | Blue | 13.00 |
| DTT450-G | Green | 13.00 |
| DTT450-R | Red | 13.00 |



WATERPROOF PEN STYLE THERMOMETER

Easy to read LCD display with a hold
feature. Temperature range of -40°F to
392°F. 2.75" stem length. NSF.

DPP400W-0-8 \$19.50/ea.



AMMONIA TEST STRIPS - "QUAT"

Litmus test strips, for quaternary
ammonia compounds.
100 strips per pack

142-1363 \$4.25/pk.



DISHWASHER TEMP LABELS

Reads up to 180°F. 24 per pack.

IT114087 \$16.00/pk.



DISHWASHER TEMP STRIPS

Reads up to 180°F. 24 per pack.

IT112426 \$15.00/pk.



T-STICKS®

Disposable, sanitary thermometers
that change color when the temperature
is reached. 250 per pack.

| Item No. | Description | Price/pk. |
|----------|----------------------|-----------|
| TST9341 | Turns green at 140°F | \$52.00 |
| TST9343 | Turns black at 160°F | 52.00 |
| TST9345 | Turns brown at 170°F | 52.00 |



SPILL-STOP

SANITIZING TABLETS

Steramine tablets, for sanitizing food
contact surfaces, use (1) tablet per gal-
lon of water, (150) tablets per bottle.

1175-0 \$9.00/ea.



CHLORINE TEST STRIPS

Litmus test strips, for
chlorine sanitizers,
waterproof vial with color-
coded test chart. 100 strips per pack.

142-1362 \$2.25/pk.



SWING A WAY CAN OPENER

6090 \$12.00/ea.





HEAVY-DUTY AIR POWERED CAN OPENER

Crown Punch Type with magnetic lid removal system. For cans up to 11"H. Recommended for up to 2000 cans/day.

625M [Call for Pricing](#)



STAINLESS STEEL MANUAL CAN OPENER

Stainless steel can opener with cast stainless steel base. NSF Certified.

| Item No. | Description | Price/ea. |
|--------------|--------------|-----------|
| S-11 | Can opener | \$497.00 |
| KT1415 (Kit) | Knife & Gear | 59.50 |



MANUAL CAN OPENER

The #1 is the standard of the industry. "Old Reliable" for cans up to 11" tall. Made in USA.

| Item No. | Description | Price/ea. |
|--------------|--------------|-----------|
| 1 | Can opener | \$130.00 |
| KT1100 (Kit) | Knife & Gear | 32.50 |



DIGITAL SCALE

22 lbs. x 0.1 oz. capacity. Platform size 11-2/5" x 7". Large easy-to-read LCD display. Power AC adaptor and batteries included.

SD2202 [\\$65.00/ea.](#)



ELECTRIC CAN OPENER

Heavy Duty, stainless steel construction made to open up 75 cans per day. Two speed motor opens #10 cans as well as smaller cans.



| Item No. | Description | Price/ea. |
|----------|-------------|-----------|
| 203/115V | 115 volt | \$725.25 |
| 203/230V | 220 volt | 821.75 |

RECEIVING SCALE

250 lbs. x 1 lb. capacity, 13-1/4" x 11" platform, press lock feature, heavy duty powder coated metal.

TR250 [\\$89.00/ea.](#)



ECONOMY SCALE

Top loading, dial type scale. Rotating dial, sloped face with white baked enamel finish.



| Item No. | Description | Price/ea. |
|----------|-----------------|-----------|
| SCAL-62 | 2 lb. x 1/4 oz. | \$23.50 |
| SCAL-66 | 6 lb. x 1/2 oz. | 23.50 |
| SCAL-810 | 10 lb. x 1 oz. | 32.25 |
| SCAL-820 | 20 lb. x 1 oz. | 32.25 |
| SCAL-840 | 40 lbs. x 2 oz. | 33.50 |
| SCAL-960 | 60 lbs. x 4 oz. | 55.00 |



PREMIER SERIES PORTION SCALES

Stainless steel housing, platform, springs and mechanism. Platform dimensions: 6" x 6-3/4". NSF Certified.



| Item No. | Description | Price/ea. |
|----------|------------------|-----------|
| SR-2 | 32 oz. x 1/4 oz. | \$126.25 |
| SR-5 | 5 lb. x 1 oz. | 126.25 |
| SR-25 | 25 lb. x 4 oz. | 134.50 |

CAN OPENER MANUAL

CanPro Can Opener, gearless drive means no gear breakdown. Cutter design alleviates metal slivers, cuts from the side, along the lid's outer seam. The lid comes off clean, no jagged edges. Perfect for #10 cans as well as smaller cans.



| Item No. | Description | Price/ea. |
|----------|-----------------|-----------|
| 56050-1 | Permanent Mount | \$328.00 |
| 56050-3 | Security Model | 450.00 |

- Security model includes locking capability (lock not included)
- Permanent mount model screws into a countertop

DISPOSABLE POLY & VINYL GLOVES

Disposable glove style that is comfortable and economical. 500 per box.



| Item No. | Description | Price/box |
|----------|--------------|-----------|
| GLP-L | Large, Poly | \$4.00 |
| GLP-M | Medium, Poly | 4.00 |
| GPX34-L* | Large, Vinyl | 3.00 |

*Powder free, vinyl, 100 per box



HOT PADS

Flexible, non-slip textured neoprene material, dishwasher safe. Temperature range - 109°F - 500°F



| Item No. | Size | Price/ea. |
|-----------|-----------|-----------|
| UHP77BK | 7" x 7" | \$10.25 |
| UHP1010BK | 10" x 10" | 15.25 |

PAN GRABBER

Baker's pad with wrist strap. Protects up to 400°F. Machine washable. 9 1/2" x 11".



| Item No. | Price/ea. |
|----------|-----------|
| 803PG | \$4.00 |

SILICONE OVEN/FREEZER MITTS

Silicone mitt with non-stick coating makes it easy to rinse clean. Protects from 0°F to 400°F.



| Item No. | Size | Price/pr. |
|----------|------|-----------|
| 801SG15 | 15" | \$5.75 |
| 801SG17 | 17" | 6.75 |

BESTGUARD™ OVEN MITTS

Fire retardant mitt with heat protection up to 450°F. Wipes clean with a damp cloth.



| Item No. | Size | Price/pr. |
|----------|------|-----------|
| 800FG15 | 15" | \$8.25 |
| 800FG17 | 17" | 9.50 |

POT WASHING GLOVES

Oil and chemical resistant with cotton lining and rough grip for improved handling. Protects to 185°F. 18"L



| Item No. | Price/pr. |
|----------|-----------|
| 887 | \$6.25 |

NITRILE DISHWASHING GLOVES

Protects against abrasions, punctures and chemicals. Heat resistant up to 185°F. 22 mil. Available in Small, Medium, Large and X-Large.



| Item No. | Price/pr. |
|----------|-----------|
| 19NU | \$14.50 |

BAR MOP TOWELS

16" x 19", cotton.



| Item No. | Price/doz. |
|----------|------------|
| 700BRT24 | \$9.25 |

CUT RESISTANT GLOVE

Fits either hand, contains Double Guard™ anti-microbial agent, meets OSHA standard, ANSI Level 7 cut protection.



| Item No. | Size | Price/ea. |
|----------|-------|-----------|
| SG10-L | Large | \$20.75 |

CUT-RESISTANT GLOVE

10 gauge, fits left or right hand, washable and bleach safe, stainless steel reinforced construction, FDA approved materials, ANSI level A5 cut protection.



| Item No. | Size | Price/ea. |
|----------|---------|-----------|
| M33413S | Small | \$6.00 |
| M33413M | Medium | 6.00 |
| M33413L | Large | 6.00 |
| M334131X | X-Large | 6.00 |

VINYL WASHING APRONS

Institutional-grade vinyl. Blue (8 mil). 36" x 43", no pockets.

| Item No. | Price/ea. |
|-----------|-----------|
| 614DVA-BL | \$5.25 |

VINYL WASHING APRONS

Heavy-weight vinyl. Green (20 mil). 36" x 45", no pockets.



| Item No. | Price/ea. |
|-------------|-----------|
| 614DVA20-GN | \$9.25 |

PROTECTIVE SLEEVE

Protects forearms & wrists from burns/cuts, Kevlar™



| Item No. | Size | Price/ea. |
|----------|------|-----------|
| 133-1599 | 14" | \$8.25 |
| 133-1600 | 18" | 10.25 |

PROTECTIVE SLEEVE

18" Sleeve, temperature range: up to 500°F for 15 seconds, machine washable, Kevlar™



| Item No. | Size | Price/ea. |
|----------|------|-----------|
| SLK16 | 18" | \$9.00 |

TOP DOG APRONS

Reusable and washable polyurethane apron. 45" long, one-piece (no ties), reversible, fits comfortably over clothes. Available in Red, Blue and Green

| Item No. | Description | Price/ea |
|----------|-------------|----------|
| 8001 | 6 mil | \$11.50 |
| 8101 | 8 mil | 14.50 |



NEOPRENE™ BIB APRON

Size 36" x 43". Heat resistant. Fire retardant. Available in black.

| Item No. | Price/ea. |
|-----------|-----------|
| 615NBA-BK | \$19.75 |



DISHWASHING APRON

Material is industrial-strength resin (reinforced with nylon threads) that will not crack, tear or peel. Extra-long, heavy-duty ties and thick, durable polypropylene "bumper edge" for longer-lasting, professional appearance. Available in Red, Black, Green, Yellow, Blue and Orange.

| Item No. | Description | Price/ea. |
|----------|---|-----------|
| VA | Regular, 36" x 42" | \$16.50 |
| AP4 | Regular, 36" x 42" (4 pack: Red, Blue, Green & Yellow) | 55.75 |
| VA-XL | Large, 38" x 42" | 15.50 |



ECONOMY BIB APRON

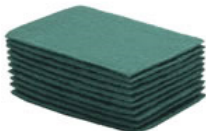
White bib apron, 34" x 34", poly/cotton blend fabric, pencil pocket.

| Item No. | Price/ea. |
|----------|-----------|
| 600BAW | \$4.25 |



SCOUR PADS

General purpose pads for cleaning pots and pans, cooking utensils, equipment, floors, walls and counters. Green.



| Item No. | Description | Price/bx. |
|----------|----------------------------------|-----------|
| ACS-S096 | 6" x 9", medium duty, 60 per box | \$15.00 |

INFORMATION SIGNS

White on Black. Made in the USA.

| Item No. | Description | Price/ea. |
|----------|-------------------|-----------|
| 4522 | 3" x 9", RINSE | \$4.25 |
| 4519 | 3" x 9", SANITIZE | 4.25 |
| 4526 | 3" x 9", WASH | 4.25 |

RINSE

SANITIZE

WASH

HAIR NETS & BEARD NETS

Non-woven, low linting and sanitary. 1000 per case.

| Item No. | Description | Price/cs. |
|-----------|-------------------|-----------|
| 1036606 | Bouffant Cap, 21" | \$53.00 |
| 1036608 | Bouffant Cap, 24" | 48.75 |
| DBRD-1000 | Beard Nets | 25.00 |



STAINLESS STEEL SCRUBBER

| Item No. | Price/ea. |
|----------|-----------|
| 75-S | \$.75 |



GRIDDLE BRICK/BRICK HOLDER

Griddle Brick and Holder cleaning.



| Item No. | Description | Price |
|----------|-------------------------------|-----------|
| GBH-2 | Grill Brick Holder | \$4.00/ea |
| GBK-348 | Grill Brick, 3-1/2" x 4" x 8" | 19.50/dz |

KLEEN-PAIL®

Color-coded pails for use with sanitizer (red) and soap (green). Durable build with robust handle design. Embossed labeling meets health code mandate, and trilingual design aids in training.

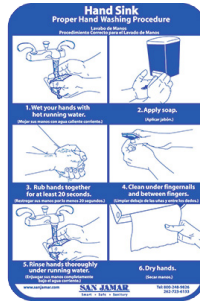


| Item No. | Size | Price/ea. | Item No. | Size | Price/ea. |
|-----------|--------------|-----------|-----------|---------------|-----------|
| KP97GN | 3 qt., Green | \$4.00 | KP196RD | 6 qt., Red | 5.00 |
| KP97RD | 3 qt., Red | 4.00 | KP196KCYL | 6 qt., Yellow | 5.00 |
| KP196KCBL | 6 qt., Blue | 5.00 | KP256GN | 8 qt., Green | 7.00 |
| KP196GN | 6 qt., Green | 5.00 | KP256RD | 8 qt., Red | 7.00 |

HANDWASHING CHART

Serves as a reminder to employees to follow food safety guidelines in the kitchen. Easily adheres to wall surface of hand washing station. 9" x 6".

| Item No. | Price/ea. |
|----------|-----------|
| HWLCT | \$10.75 |



FIRST AID KITS

Stocked with OSHA compliant product. Well-organized and clearly labeled. Includes informational AMA first aid book.

| Item No. | Description | Price/ea. |
|----------|---------------|-----------|
| IT131936 | For 35 people | \$65.00 |
| IT117598 | For 50 people | 98.00 |



BURN CARE KIT

Equipped with burn gel, gauze, and bandages in a convenient plastic carrying case, the burn kit will keep your facility prepared to handle burn injuries.

| Item No. | Price/ea. |
|----------|-----------|
| IT113786 | \$78.25 |



BANDAGE DISPENSER

Wall mount, pilferage-resistant with locked upper compartment, blue bandages

| Item No. | Price/ea. |
|----------|-----------|
| MKBD100 | \$23.25 |



KENKUT® II SAFETY DISPENSER

24"W. Film and foil dispenser

| Item No. | Price/ea. |
|----------|-----------|
| KK6 | \$77.50 |



INGREDIENT BINS

Ingredient Bin, includes scoop, polycarbonate sliding lid, polyethylene container, 3" locking casters, back swivel wheels, white

| Item No. | Description | Price/ea. |
|----------|-------------|-----------|
| IGBN-21 | 21 Gallon | \$174.50 |
| IGBN-27 | 27 Gallon | 191.00 |



RUBBER OVER-THE-SHOE BOOT

17" Tall, heavy-duty. Available in sizes up to 18. Adjustable buckle strap. Tread sole pattern provides excellent traction

| Item No. | Size | Price/pr. |
|------------|------|-----------|
| 2KP4481-8 | 8 | \$23.75 |
| 2KP4481-9 | 9 | 23.75 |
| 2KP4481-10 | 10 | 23.75 |
| 2KP4481-11 | 11 | 23.75 |
| 2KP4481-12 | 12 | 23.75 |
| 2KP4481-13 | 13 | 23.75 |
| 2KP4481-14 | 14 | 23.75 |



ECONOMY PVC KNEE BOOT OVER-THE-SOCK

16" Tall. Cleated sole provides reliable traction. Economical PVC work boot. Nylon lined for easy on/off. Washable.

| Item No. | Size | Price/pr. |
|------------|------|-----------|
| 2KP3962-8 | 8 | \$16.50 |
| 2KP3962-9 | 9 | 16.50 |
| 2KP3962-10 | 10 | 16.50 |
| 2KP3962-11 | 11 | 16.50 |
| 2KP3962-12 | 12 | 16.50 |
| 2KP3962-13 | 13 | 16.50 |
| 2KP3962-14 | 14 | 16.50 |



INGREDIENT BINS

Shelf Ingredient Bin, stackable, transparent polycarbonate lid, one-handed lift and slide lid, polypropylene body, NSF

| Item No. | Description | Price/ea. |
|----------|-------------|-----------|
| IB-2S | 2 Gallon | \$23.50 |
| IB-5S | 5 Gallon | 67.75 |
| IB-10S | 10 Gallon | 86.00 |



INGREDIENT BINS

Heavy-duty unit with polyethylene tubs in an all welded mobile aluminum cart. 21 gallon (3 tubs, 50 lbs. per bin). 28"H x 17 1/2"W x 31"D.

| Item No. | Price/ea. |
|----------|-----------|
| 123P | \$425.00 |





INGREDIENT BINS

One-piece, seamless, single-wall, polyethylene construction. Slide-back lid provides easy access. Heavy-duty 3" casters, 2 swivel and 2 fixed. FDA accepted material. NSF.



| Item No. | Description | Price/ea. |
|----------|-------------|-----------|
| IBSF27 | 27 Gallon | \$216.00 |
| IB32 | 32 Gallon | 224.50 |
| IB36 | 34 Gallon | 229.50 |
| IB44 | 42.5 Gallon | 232.25 |

REPLACEMENT LIDS

| Item No. | Description | Price/ea. |
|-----------|-------------|-----------|
| IB27LIDCW | Fits IB27 | \$52.50 |
| IB32LIDCW | Fits IB32 | 56.50 |
| IB36LIDCW | Fits IB36 | 52.25 |
| IB44LIDCW | Fits IB44 | 52.25 |



INGREDIENT BINS

Lid slides open for easy access. Portable, convenient storage bins for large quantities of sugar, flour, etc. 3" caster wheels with brakes. Polyethylene. White. NSF.



| Item No. | Description | Price/ea. |
|----------|-------------|-----------|
| IB-21 | 21 Gallon | \$138.75 |
| IB-27 | 27 Gallon | 152.75 |

REPLACEMENT LIDS

| Item No. | Description | Price/ea. |
|----------|-------------|-----------|
| IB-21-L | Fits IB-21 | \$27.50 |
| IB-27-L | Fits IB-27 | 33.00 |



BRUTE® GREENSKEEPER® CONTAINER

Lettuce crisper. Built-in reservoir. FDA & HACCP Approved. White. Includes dolly.



| Item No. | Capacity | Dia. x H | Price/ea. |
|----------|-----------|-------------------|-----------|
| RCP 2624 | 20 Gallon | 22-1/2" x 33-1/4" | \$278.00 |
| RCP 2636 | 32 Gallon | 25" x 38-1/2" | 346.50 |



BLIXER

2 speed motor, chrome zinc die-cast base, with lid, rugged one-piece stainless steel blade., 120V/60 Hz, NSF



| Item No. | Description | Price/ea. |
|----------|-------------|-----------|
| BLIXER 3 | 3-1/2 qt. | CALL |
| BLIXER 5 | 5-1/2 qt. | CALL |
| BLIXER 6 | 7 qt. | CALL |



BLENDER

Wave~Action™ system continually forces mixture down into the blades. 3/4 peak HP motor provides ample power and torque. High/low and on/off/pulse toggle switches are easy to reach and control. 32 oz. stainless steel container and blades. 120V, 60 Hz.



HBB250SR \$171.50/ea.



BLENDER

2 speed motor, chrome zinc die-cast base, with lid, rugged one-piece stainless steel blade., 120V/60 Hz, NSF



| Item No. | Description | Price/ea. |
|----------|-------------------------|-----------|
| BB160 | Polycarbonate, 48 oz. | \$121.50 |
| BB160S | Stainless steel, 32 oz. | 144.50 |

HALF GALLON FOOD BLENDER

Heavy-duty, 2 HP food blender. 48 oz. capacity. Exclusive one piece stainless steel cutting blade.



| Item No. | Description | Price/ea. |
|----------|---------------|-----------|
| TBB145 | Polycarbonate | \$236.25 |

THE RAPTOR™ HIGH POWER BLENDER

Heavy-duty, 3.5 HP food blenders. 64 oz. capacity. Exclusive one piece stainless steel cutting blade. High/lo with off and pulse paddle switches. 120V, NSF certified.



| Item No. | Description | Price/ea. |
|-----------|-----------------|-----------|
| MX1050XTX | Polycarbonate | \$331.25 |
| MX1050XTS | Stainless steel | 456.50 |



HOT WATER DISPENSERS

Stainless steel construction, fully insulated sides and top for operator safety; compact space saver design, controlled refill, and fast recovery time.



| Item No. | Description | Price/ea. |
|----------|------------------------|-----------|
| HWB-15 | High volume, 15 gallon | 1,331.75 |
| HWB-25 | High volume, 25 gallon | 1,782.00 |



POUROVER DECANTER BREWERS

Low profile design. Brewing capacity: 3.8 gallons of perfect coffee per hour. Decanters sold separately.



| Item No. | Description | Price/cs. |
|------------|-----------------------------|-----------|
| 13300.0002 | One upper, one lower warmer | \$292.50 |
| 13300.0004 | Two upper, one lower warmer | 307.00 |

DECANTERS

64 oz., plastic w/stainless steel base.



| Item No. | Description | Price/cs. |
|----------|-------------|-----------|
| CD-64K | Black | \$8.25 |
| CD-64O | Orange | 8.25 |

ALUMINUM COFFEE URNS

Single wall insulation, commercial duty, dual heaters, brushed aluminum, 120v/60/1ph



| Item No. | Description | Price/cs. |
|----------|-------------|-----------|
| 45040R | 40 Cups | \$78.50 |
| 45060R | 60 Cups | 95.75 |
| 45100R | 100 Cups | 107.00 |



**Grindmaster
Cecilware**

COFFEE BREWER URN

Tamper Resistant/High Volume Coffee Urn, double electric, (2) 10 gallon capacity liners with lockable lids, independent brewing systems, auto refill, low water cutoff system, side mounted control panel, includes lockable control box and flanged feet.



| Item No. | Price/cs. |
|----------|-----------|
| 67710(E) | CALL |

COLD BEVERAGE DISPENSER

Pre-Mix Cold Beverage Dispenser, clear polycarbonate bowl, stainless steel side panels & drip tray. 8-1/4" cup clearance. 120V/1ph



| Item No. | Description | Price/ea. |
|----------|----------------------|-----------|
| D15-3 | Single, 5 gallon | \$ 840.00 |
| D25-3 | Double, (2) 5 gallon | 1,157.50 |
| D35-3 | Triple, (3) 5 gallon | 1,500.25 |



JET SPRAY BEVERAGE DISPENSERS

Visual display dispensing system. Constant recirculation of beverage keeps drinks chilled and fresh. 5 gallon bowl size.



| Item No. | Description | Price/ea. |
|----------|-----------------|------------|
| JS7 | One dispenser | \$1,102.50 |
| JT20 | Two dispenser | 1,546.25 |
| JT30 | Three dispenser | 2,051.00 |

MAXIMIZER™ FOOD BAR

6 foot bar offers upscale European styling. Holds six full size food pans. Double-sided acrylic sneeze guard. Available colors: Brown, Black, Forest Green and Slate Blue.



| Item No. | Price/ea. |
|----------|------------|
| 7711 | \$2,082.00 |

PORTABLE FOOD BAR

Easy to assemble; add tray slides and end shelves without removing legs. Wider sneeze guard offers better coverage; two-piece acrylic shields allow for easy assembly. Molded from durable polyethylene. Available colors: Brown, Black and Forest Green.
* Shown with optional Tray Slide.



| Item No. | Size | Price/ea. |
|----------|-----------------------------|------------|
| 6605 | 4 ft., legs only | \$1,143.75 |
| 6606 | 6 ft., legs only | 1,283.50 |
| 6611* | 6 ft. with storage and legs | 1,641.50 |

| Options | Size | Price/ea. |
|----------|----------------------------|-----------|
| Item No. | | |
| 6620 | Tray slide for 4 ft. bar | \$274.25 |
| 6621 | Tray slide for 6 ft. bar | 307.00 |
| 6625 | End shelf for 4' or 6' bar | 264.25 |

* available in Black & Forest Green only.



CREST
FOODSERVICE EQUIPMENT
Innovative Designs & Solutions

CLASSIC CROCKS

Thick-walled heavy-weight design. Made of SAN. High-gloss finish is extremely scuff-resistant. 0°F - 180°F temperature range. Sold by the case. Colors: Brown, White, Black, Beige & Clear. Translucent snap-on lids included.



| Item No. | Size | Case Pack | Price/cs. |
|----------|---------|-----------|-----------|
| 0301 | 1.2 qt. | 12 | \$69.00 |
| 0316* | 1.5 qt. | 6 | 42.00 |
| 0302 | 2.7 qt. | 6 | 48.00 |
| 0304** | 4 qt. | 6 | 84.00 |

*Short/4" high – not available in white

** Only available in Black

POLYCARBONATE PEBBLED SALAD BOWLS

Resists scratches. NSF Listed.



| Item No. | Description | Price/ea. |
|----------|-------------|-----------|
| 721507 | 11 qt. | \$16.00 |
| 721807 | 18 qt. | 25.25 |
| 722307 | 33 qt. | 38.25 |

POLY-TUF™ CROCKS

Resilient polypropylene is the economical choice. Glossy-finish crocks resist chipping and cracking. 32°F to 180°F temperature range. Sold by case. Colors: Beige, Black, Brown.



| Item No. | Size | Case Pack | Price/cs. |
|----------|---------|-----------|-----------|
| 0341 | 1.2 qt. | 12 | \$63.00 |
| 0343* | 1.5 qt. | 6 | 42.00 |
| 0342 | 2.7 qt. | 6 | 46.50 |

*Short/4" high

CONDIMENT BAR

Includes (2) 3 qt. stainless steel pans w/pumps, (3) 1.1 qt. middle pans w/plastic covers w/ladle cutouts, dry well unit, stainless steel construction.

nemco FOOD EQUIPMENT



| Item No. | Price/ea. |
|------------|--------------|
| 88100-CB-2 | \$253.50/ea. |

CARLISLE FOODSERVICE PRODUCTS

PACKET RACKS

Hold all types of condiment packets, utensils, straws, napkins and take up very little counter space. Sturdy, aluminum frame with rugged plastic containers. 9 containers

| Item No. | Price/ea. |
|----------|-----------|
| 381109LG | \$231.00 |



TABLETOP FOOD BAR

Tabletop Food Bar, holds (5) full size food pans, double-sided acrylic sneeze guard, scratch resistant, insulated, faucet-type drain plug, polyethylene, Available Colors: Black, Forest Green, Brown and Red.



| Item No. | Length | Capacity | Price/ea. |
|----------|--------|----------|-----------|
| 6600 | 4' | 3 Pan | \$745.25 |
| 6601* | 6' | 5 Pan | 865.75 |

*Black only

SALAD TONG

9", made of revolutionary plastic material for strength and longevity. Withstands heat up to 300°F. NSF Listed. 12 per case. Sold by the case. Colors: Beige, Black, Brown, White, Red and Green.



| Item No. | Price/cs. |
|----------|-----------|
| 4609 | \$30.00 |

SALAD SPOONS

Polycarbonate construction. 12 per case. Colors: Beige, Black, Brown, White, Red, Green and Clear.



| Item No. | Description | Price/cs. |
|----------|--------------|-----------|
| 4460 | 8", 1/2 oz. | \$18.00 |
| 4470* | 10", 3/4 oz. | 21.00 |

*Not available in white or green

SALAD LADLES

Polycarbonate construction. 12 per case. Colors: Brown, White, Black, Beige, Red and Clear.



| Item No. | Description | Price/cs. |
|----------|----------------|-----------|
| 0295 | 9-1/2", 1 oz. | \$24.00 |
| 0296* | 13-1/2", 1 oz. | 27.00 |

*Only available in black

WATER COOLERS

Drip-resistant spigot, screw-tight lid. Two bail handles for easy carrying.

| Item No. | Description | Price/ea. |
|----------|-------------|-----------|
| 1840999 | 5 Gallon | \$34.25 |
| RHP-1610 | 10 Gallon | 76.25 |



BEVERAGE COOLER

Igloo Beverage Cooler, pressure fit lid, urethane foam insulation.

| Item No. | Capacity | Price/ea. |
|----------|--------------------|-----------|
| 451 | 5 Gallon | \$38.50 |
| 4101 | 10 Gallon | 59.00 |
| 24009 | Replacement Spigot | 12.00 |

igloo



INSULATED CAMTAINERS®

Single-molded, seamless, double-wall, high-density, polyethylene construction. Drip proof recessed spigot. Vent cap on all models. Available colors: Navy Blue, Slate Blue, Coffee Beige, Dark Brown, Brick Red, Green, Black, Hot Red.
**Available with plastic or metal latches. Metal latches will have a longer lead time.

CAMBRO
TRUSTED FOR GENERATIONS™



| Item No. | Capacity | Price/ea. |
|----------|--------------|-----------|
| 250LCD | 2.5 Gallon | \$104.00 |
| 500LCD | 4.75 Gallon | 118.00 |
| 1000LCD | 11.75 Gallon | 180.00 |

BEVERAGE SERVER REPLACEMENT PARTS

Faucet & Spout Kits

| Item No. | Capacity | Price/ea. |
|----------|------------|-----------|
| 60267 | Faucet Kit | \$10.50 |
| 64003 | Spout Kit | 2.25 |



Plastic Latch - Fits Cambro Beverage Servers - 250LCD & 500LCD
60263 \$3.25/ea.

Plastic Latch - Fits Cambro Beverage Servers - 1000LCD
60264 \$3.25/ea.



DOUBLE CAVITY CAMCART®

Polyethylene construction foam insulation, door gaskets and tight-fitting hinges and latches. Molded-in handle and 6" casters with impact plates. Holds 18" x 26" pans.
Colors: Slate Blue, Coffee Beige, Dark Brown and Gray.

| Item No. | Price/ea. |
|----------|------------|
| 1826DBC | \$1,368.75 |



SILVER KING
BY PRINCE CASTLE

MAJESTIC MILK DISPENSERS

Stainless steel interior & exterior Easy to use dripless operation. Accommodates 3, 5 or 6 gallon bags or up to 6 gallon bag-n-box. Adjustable temperature control and built-in temperature indicator. 115V 60 Hz, single phase.



| Item No. | Description | Price/cs. |
|---|---------------|-----------|
| SKMAJ1/C4 | Single valves | CALL |
| SKMAJ2/C4 | Double valve | CALL |
| SKMAJ3/C4 | Triple valve | CALL |
| *Flanged Feet available --- call for pricing. | | |

CARLISLE
FOODSERVICE PRODUCTS

CATERAIDE™ BEVERAGE SERVERS

Meets NSF Standards. Made of rugged, stain and scratch resistant polyethylene. Latches are mounted into steel plates. Available colors: Brown, Black, Forest Green and Slate Blue

| Item No. | Total Capacity | Price/ea. |
|----------|----------------|-----------|
| LD500N | 5 Gallon | \$130.00 |
| LD1000N | 10 Gallon | 200.00 |



CATERAIDE™ XT BEVERAGE SERVERS

Sure-Latch™ wide design has three times the latch area of other beverage servers for a secure seal. Lid design and improved o-ring seal eliminate leaks during transport; convenient pop-up vent. Compact size saves counter space. Available colors: Brown, Black, Red, Forest Green and Slate Blue.



| Item No. | Total Capacity | Price/ea. |
|----------|----------------|-----------|
| XT5000 | 5 Gallon | \$130.00 |
| XT10000 | 10 Gallon | 200.00 |

BEVERAGE DISPENSER

Non-Insulated, 3 gallon, 10-7/8" x 12-1/2" x 16-3/4"

| Item No. | Price/ea. |
|----------|-----------|
| 953 | \$31.00 |



CAM GOBOX®

Cambro's latest line of insulated transporters. Thermal insulation, holds hot or cold food for many hours. Lightweight, dishwasher safe and stackable. Holds full size steamtable pans.

*Metal Food Pans over 250° will result in damage to the carrier.



| Item No. | Capacity/Front Loader | Price/ea. |
|----------|-----------------------|-----------|
| EPP300 | (4) 2-1/2" or (3) 4" | \$202.50 |
| EPP400 | (6) 2-1/2" or (4) 4" | 233.25 |

| | | |
|-----------|------------------|-------|
| CD3253EPP | Dolly | 75.75 |
| CP3253 | Camchiller Plate | 56.75 |

CAMCART

Full size food pans. Stores hot and cold foods. One piece, polyethylene shell is filled with thick foam insulation. Durable nylon latch and air-tight gasket. NSF Certified Colors: Navy Blue, Slate Blue, Coffee Beige, Dark Brown, Brick Red, Green, Gray and Black.



| Item No. | Food Pan Capacity | Price/ea. |
|----------|-------------------|-----------|
| UPC600 | (8) 2-1/2 pans | \$674.00 |
| UPC800 | (12) 2-1/2 pans | 797.75 |
| UPC1200 | (16) 2-1/2 pans | 1,037.25 |
| UPC1600 | (24) 2-1/2 pans | 1,492.75 |

CAMCARRIER®

For use with 12" x 20" pans. Tough, one piece, polyethylene shell is filled with thick foam insulation. Combined with a durable nylon latch and air-tight gasket for top temperature performance. Holds (6) 2-1/2" pans. Colors: Dark Brown, Coffee Beige, Cold Blue, Navy Blue, Slate Blue, Black, Granite Gray, Granite Green and Granite Sand. NSF.



| Item No. | Description | Price/ea. |
|-------------|-------------|-----------|
| UPC400 | CamCarrier | \$321.50 |
| CD400/Dolly | Dolly | 194.50 |

CAMCHILLER®

Perfect for keeping food chilled during transport. 20- 13/16"L x 12-7/8"W x 1- 1/2"H. Cold Blue. NSF Listed.



| Item No. | Price/ea. |
|----------|-----------|
| CP1220 | \$75.75 |

ULTRA PAN CARRIERS®

Nylon latches ensure maximum temperature retention. Vent cap equalizes internal pressure. Interlock stacking during transport and storage. Colors: Dark Brown, Granite Gray, Slate Blue, Coffee Beige, Black, Granite Green and Granite Sand. NSF.



| Item No. | Holds | Price/ea. |
|----------|-------------------------------|-----------|
| UPC140 | 1 Full size pan up to 4" deep | \$218.75 |
| UPC160 | 1 Full size pan up to 6" deep | 221.50 |
| UPC180 | 1 Full size pan up to 8" deep | 226.75 |
| CD160 | Dolly | 175.50 |

ICE CADDIES



Polyethylene body and thick foam insulation provide durability and long lasting ice storage. Available Colors: Black, Dark Brown, Coffee Beige, Granite Gray, Granite Green, Slate Blue & Gray. NSF.



| Item No. | Food Pan Capacity | Price/ea. |
|----------|---------------------|-----------|
| ICS100L | 100 lb./slant top | \$565.75 |
| ICS125L | 125 lb./standard | 575.00 |
| ICS125T | 125 lb./tall | 610.00 |
| ICS175L | 175 lb. | 683.00 |
| ICS175T | 175 lb./tall | 718.25 |
| ICS200TB | 200 lb./wide wheels | 783.00 |

CAMBOX® BUS BOXES

Reinforced rims reduce bending, bowing, and breaking. Comfort Curve™ handles for a sure, comfortable grip. Light Gray. NSF



| Item No. | W x L x H | Price/ea. |
|----------|--------------------------------|-----------|
| 21155CBP | 15-1/4: x 20-1/4" x 4-15/16" | \$11.75 |
| 21157CBP | 15-3/16" x 20-3/16" x 6-15/16" | 12.75 |

FLATWARE CYLINDER HOLDER

18/8 stainless steel construction.

| Item No. | Holes | Price/ea. |
|----------|-------|-----------|
| FC-4H | 4 | \$21.75 |
| FC-6H | 6 | 26.00 |



FLATWARE BUS BOX

Heavy-duty silverware tray features contoured handles for easy handling. 21-1/4"L x 11-1/2"W x 3-3/4"H.

| Item No. | Price/ea. |
|----------|-----------|
| 1071 | \$11.75 |





RF14



RG36-114



RTP14



RB14



RP14

OPTICLEAN™ RACKS

19-3/4" x 19-3/4". NSF Listed. Carlisle Blue.

| Item No. | Description | Case Pack | Price/ea. |
|----------|----------------------------|-----------|-----------|
| RF14 | Combination/flatware rack | 6 | \$16.75 |
| RB14 | Open/bowl rack | 6 | 16.75 |
| RG36-114 | Glass rack, 36-compartment | 4 | 28.50 |
| RP14 | All purpose peg rack | 6 | 16.75 |
| RTP14 | Peg rack, extra tall pegs | 6 | 17.50 |

WASHRACK DOLLY

Holds and transports 19-3/4" x 19-3/4" racks. Large 4" ball bearing swivel casters. Colors: Blue and Black.

| Item No. | Description | Price/ea. |
|----------|-------------|-----------|
| C2236 | No handle | \$103.50 |
| C2236H | With handle | 174.00 |



CAMRACK® 5 X 9 PEG RACK

Peg rack with 1 extender. Holds deep dish plates and most standard insulated trays in the industry. 3-1/8" Spacing, Soft Gray.



PR59500 \$26.50/ea.

TRAEX® INSULATED



TRAY & STEAM TABLE PAN RACK

19-3/4"W x 19-3/4"D x 5-1/4"H. For insulated trays and steam table pans.



TR22 \$62.50/ea.



FLATWARE CYLINDER

Meshed bottom and open sides are best for the dispersion of water and air.



| Item No. | Price/ea. |
|----------|-----------|
| CYL-M | \$1.50 |

UTILITY CARTS

Plastic construction with 5" non marking casters.

Economy - 330 lb. capacity

| Item No. | L x W | Price/ea. |
|----------|-----------|-----------|
| 270494 | 16" x 30" | \$78.50 |



Standard-Duty - 500 lb. capacity

| Item No. | L x W | Price/ea. |
|----------|-----------|-----------|
| 270482 | 16" x 30" | \$96.00 |
| 270483 | 24" x 36" | 122.75 |



Flat Top - 500 lb. capacity

| Item No. | L x W | Price/ea. |
|----------|-------------|-----------|
| 270493 | 25.5" x 34" | \$121.50 |



UTILITY CARTS

Heavy duty all welded construction. 5" x 2" plate casters. Supports 500 lbs. per shelf.



| Item No. | Shelves | Shelf Size | Price/ea. |
|-------------|---------|------------|-----------|
| UC-2-1832SS | 2 | 18" x 32" | \$660.00 |
| UC-2-2133SS | 2 | 21" x 33" | 756.75 |
| UC-2-2149SS | 2 | 21" x 49" | 1,075.00 |
| UC-3-1832SS | 3 | 18" x 32" | 760.00 |
| UC-3-2133SS | 3 | 21" x 33" | 932.50 |
| UC-3-2149SS | 3 | 21" x 49" | 1,069.25 |

TRAY DELIVERY CARTS

All welded aluminum construction.

(4) 6" heavy-duty casters. 2000 lb. capacity.



| Item No. | Capacity | Shelf Size | Price/ea. |
|----------|-----------|-------------------|-----------|
| 97179 | 80 Trays | 28-3/4" x 33-5/8" | \$613.00 |
| 97180 | 110 Trays | 28-3/4" x 50-5/8" | 692.25 |

WASHRACK DOLLY

Aluminum construction.



| Item No. | Description | Price/ea. |
|-------------|-------------|-----------|
| 1176A | No handle | \$233.75 |
| 1176A/1179A | With handle | 262.75 |

TRIGARD™ CART COVERS

Tear proof material. Resists temperatures up to 400°F. Velcro closures and side tabs to hold doors open for easy access.



INSULATED

| Item No. | Dimensions | Price/ea. |
|----------|--------------------|-----------|
| CC1i | 42"L x 32"W x 38"H | \$352.25 |
| CC2i | 58"L x 32"W x 38"H | 452.00 |
| CC3i | 33"L x 18"W x 32"H | 173.00 |

NON INSULATED

| Item No. | Dimensions | Price/ea. |
|----------|--------------------|-----------|
| CC1 | 42"L x 32"W x 38"H | \$241.00 |
| CC2 | 58"L x 32"W x 38"H | 327.50 |
| CC3 | 33"L x 18"W x 32"H | 105.50 |



BEVERAGE SERVICE CARTS

Insulated cabinets hold hot or cold food in full, 1/2 or 1/3 size food pans. Wire Rack (sold separately) fits into cabinet to hold pans and trays. 6" casters, 2 fixed, 2 swivel. 44-1/2"W x 30"D x 44"H. Available colors: Granite Gray, Granite Green and Slate Blue. NSF.



| Item No. | Size | Price/ea. |
|----------|---|------------|
| MDC24 | Molded Top Counter Holds (3) 1 Gallon Container | \$1,390.50 |
| MDC24R | Wire rack | 81.50 |

INSULATED TRAY DELIVERY CABINETS

All welded s/s construction. Non-Insulated cart w/insulated doors, (1) shelf per compartment, "Maxi-Guard" locking security latch for each door, tamper-resistant fasteners, full perimeter bumper, push-pull handles. Holds insulated trays,



| Item No. | Description | Price/ea. |
|-------------|--------------------------|-----------|
| ETC-1314-64 | Holds (64) Trays/2 Doors | CALL |
| ETC-1314-80 | Holds (80) Trays/2 Doors | CALL |
| ETC-1314-96 | Holds (96) Trays/3 Doors | CALL |

PLATFORM TRUCKS

Aluminum construction. 2600 lb. load capacity. Removable handle. (4) 6" x 2" polyurethane plate casters (2 swivel, 2 rigid)



| Diamond Deck | Price | Smooth Deck | Price | Dimensions |
|--------------|----------|-------------|----------|------------|
| PT-2436-P6 | \$598.00 | PT-2436-S6 | \$551.00 | 24" x 36" |
| PT-2448-P6 | 616.50 | PT-2448-S6 | 603.50 | 24" x 48" |
| PT-3048-P6 | 694.00 | PT-3048-S6 | 653.00 | 30" x 48" |
| PT-3060-P6 | 726.25 | PT-3060-S6 | 718.00 | 30" x 60" |
| PT-3660-P6 | 858.75 | PT-3660-S6 | 782.00 | 36" x 60" |

PLATFORM TRUCKS

Structural plastic construction and rounded corners protect against accidental wall and door damage. All platform trucks come in charcoal gray and feature a heavy-duty, reinforced steel handle.



Standard Duty - 1200 lb. Capacity

| Item No. | Dimensions | Price/ea. |
|----------|-----------------------|-----------|
| 5865 | 24" x 48", 6" casters | \$511.25 |
| 5880 | 30" x 60", 6" casters | 617.50 |

Heavy-Duty - 2200 lb. Capacity

| Item No. | Dimensions | Price/ea. |
|----------|-----------------------|-----------|
| 5870 | 24" x 48", 8" casters | \$581.75 |
| 5885 | 30" x 60", 8" casters | 778.25 |

TRAY DELIVERY CARTS

Heated, insulated, humi-temp heat system w/eye level controls, welded s/s tray racks, tamper resistant fasteners, s/s construction, heavy duty push bars, full bumper, Maxi-Guard locking security latch for each door.



| Item No. | Description | Price/ea. |
|----------|-----------------|-----------|
| PTS-3030 | 1 Door/30 Trays | CALL |
| PTS-4040 | 2 Door/40 Trays | CALL |
| PTS-6060 | 2 Door/60 Trays | CALL |



MIGHTYLITE™ INSULATED TOP-LOAD FOOD CARRIERS

Ultra light, durable and stackable insulated top-load food carriers for transporting and delivering hot and cold food pans, containers, plated meals, or virtually anything else. Keeps food safe for 5+ hours. Never worry about replacing or cleaning hinges, latches, or gaskets.

Capacity:

ML180 - (3) 2.5" Pans, (2) 4" pans, (1) 6" Pan, (1) 8" Pan
ML180XL - (5) 2.5" Pans, (3) 4" Pans, (2) 6" Pans, (1) 8" Pan.

Capacity is based on Full Size, 12" x 20" Pans.

| Item No. | Description | Price/ea. |
|----------|--------------------|-----------|
| ML180 | Top Loader | \$81.50 |
| ML180XL | Top Loader (Large) | 104.00 |
| MLD1 | Dolly | 193.50 |

HEATED HOLDING CABINET

Mobile holding cabinet, full height, insulated, solid doors, top mount controls & analog thermometer, thermostat 70° to 200°F, lip load, holds (35) 18" x 26" pans, 5" casters (two with brakes), 304 stainless steel. 120V/60/1-ph, 1440 W, 12 amps. NSF, Energy Star.

C569L-SFS-LA \$4,420.50



HEATED HOLDING CABINET

Mobile, full height, insulated cabinet and door, removable bottom mount control module, thermostat to 200 F, fixed wire slides on 3" centers. Accommodates (18) 18" x 26" or (34) 12" x 20" x 2 1/2" pans. 5" casters. 120V/60/1, 200W, 16.7 amps, NEMA 5-20P, UL, CUL, NSF.

C539-HFS-4 \$2,127.00



CORRECTIONAL MEAL DELIVERY CART

Tall profile, 3 doors, 3 compartments, holds (60) each 10146DCW or 10146DCP 6 compartment trays. Heavy-duty aluminum handles w/ security screws. Stainless steel transit latch at top of each door. 6" heavy-duty casters (2 swivel no brake, 2 rigid). 60"W x 29-1/4"D x 63-5/8"H. NSF.



Available colors: Granite Gray, Granite Sand, & Slate Blue --- all with cream color doors.

MDC1411T60 \$3,112.50



NON-INSULATED COMBINATION PROOFING/HOLDING CABINET

Non-insulated combination holding and proofing cabinet. Features a digital thermometer, drip trough, fully gasketed see through door and individual temperature and humidity controls. Fixed wire slides at 3" o.c. Dimensions: 25-1/8"W x 69-3/4"H x 30-1/4"D.



C519-CFC-4 \$1,828.50

SECURITY CARTS

LC models: chrome plated finish. LK models: dark green epoxy. Intermediate shelf not included.

| Item No. | L x W x H | Price/ea. |
|----------|-------------------------|-----------|
| SEC53LC | 28" x 38-1/2" x 68-1/2" | \$849.75 |
| SEC53LK3 | 28" x 38-1/2" x 68-1/2" | 967.75 |
| SEC55LC | 28" x 50-1/2" x 68-1/2" | 1,002.75 |
| SEC55LK3 | 28" x 50-1/2" x 68-1/2" | 1,152.00 |
| SEC56LC | 28" x 63" x 68-1/2" | 1,076.25 |
| SEC56LK3 | 28" x 63" x 68-1/2" | 1,241.00 |



CAMSHELVING WALL SHELVES



Wall shelf, solid, polypropylene, 2" molded backsplash, speckled gray, NSF.

| Item No. | Description | Price/ea. |
|---------------|-------------|-----------|
| CSWS1836SK480 | 18" x 36" | \$98.50 |
| CSWS1848SK480 | 18" x 48" | 108.00 |



UTILITY TETHER SYSTEM

Complete Kit includes (1) 5' cable, (1) security fastener & a lock.

| Item No. | Capacity | Price/ea. |
|----------|------------------------|-----------|
| UTS-100L | Complete Kit | \$22.00 |
| UTS-100 | Kit without Lock | 11.50 |
| UTS-SF | Security fastener only | 5.50 |
| UTS-CBL | 5' Cable only | 6.00 |



TRAY MAKE-UP CONVEYOR

Stainless steel construction. 8' base unit. Non-Powered roller conveyor. Removable rollers for cleaning.

Custom Tray Make-up Conveyors available

RCF [CALL](tel:866.623.8954)

EQUIPMENT STAND

Heavy duty, 14 gauge stainless steel, marine edge, stainless steel fixed lower shelf, stainless legs & metal bullet feet.



| Item No. | Description | Price/ea. |
|-------------|--------------------|-----------|
| MS4-2424SSK | 24"W x 24"L x 20"H | \$437.50 |
| MS4-2430SSK | 24"W x 30"L x 20"H | 466.50 |
| MS4-3030SSK | 30"W x 30"L x 20"H | 489.50 |
| MS4-3036SSK | 30"W x 36"L x 20"H | 523.50 |



DUNNAGE RACKS

One piece construction combined with sturdy legs makes these racks especially durable, strong and stable. Slotted top. 21"D x 12"H. Available colors: Dark Brown and Speckled Gray. NSF.



| Item No. | Description | Price/ea. |
|----------|-------------------------|-----------|
| DRS300 | 30"W, 1500 lb. capacity | \$127.00 |
| DRS360 | 36"W, 1500 lb. capacity | 138.00 |
| DRS480 | 48"W, 3000 lb. capacity | 165.00 |
| DRS600 | 60"W, 3000 lb. capacity | 189.00 |



WORK TABLES

Super Heavy Duty

14 gauge stainless steel top w/rolled edges front and back, 18 gauge s/s undershelf with s/s legs. Adjustable 1" s/s feet. Ships all welded. NSF.



| Item No. | Description | Price/ea. |
|----------|-------------|-----------|
| T3030SE | 30"W x 30"L | \$804.50 |
| T3036SE | 30"W x 36"L | 833.75 |
| T3048SE | 30"W x 48"L | 907.00 |
| T3060SE | 30"W x 60"L | 974.00 |
| T3072SE | 30"W x 72"L | 1,044.75 |
| T3084SE | 30"W x 84"L | 1,288.75 |
| T3096SE | 30"W x 96"L | 1,403.00 |

Heavy Duty

16 gauge stainless steel top w/rolled front edge. Heavy gauge s/s undershelf with s/s legs. Adjustable 1" s/s feet. Ships all welded. NSF.

| Item No. | Description | Price/ea. |
|----------|-------------|-----------|
| T3030SB | 30"W x 30"L | \$740.50 |
| T3036SB | 30"W x 36"L | 776.00 |
| T3048SB | 30"W x 48"L | 797.00 |
| T3060SB | 30"W x 60"L | 850.50 |
| T3072SB | 30"W x 72"L | 901.75 |
| T3084SB | 30"W x 84"L | 1,018.75 |
| T3096SB | 30"W x 96"L | 1,113.50 |

Economy

18 gauge stainless steel top w/hemmed rolled rim edge on front and back. 18 gauge s/s undershelf with s/s legs. Adjustable s/s bullet feet. NSF.

| Item No. | Description | Price/ea. |
|--------------|-------------|-----------|
| BPT-3030SL-X | 30"W x 30"L | \$192.50 |
| BPT-3036SL-X | 30"W x 36"L | 210.00 |
| BPT-3048SL-X | 30"W x 48"L | 248.75 |
| BPT-3060SL-X | 30"W x 60"L | 288.75 |
| BPT-3072SL-X | 30"W x 72"L | 325.00 |

DUNNAGE RACKS

All welded aluminum construction. 24"W x 12"H.



| Item No. | Capacity | Length | Price/ea. |
|----------|----------|--------|-----------|
| 2008 | 2500 lb. | 36" | \$108.50 |
| 2009 | 2500 lb. | 48" | 126.25 |
| 2010 | 2000 lb. | 60" | 144.00 |



T-BAR ALUMINUM FIXED SHELVING

Constructed of all welded aluminum. 1500 lb. capacity per shelf. NSF.



| Item No. | Shelves | H x D x L | Price/ea. |
|----------|---------|-----------------|-----------|
| 1041TB | 3 | 60" x 20" x 36" | \$329.50 |
| 1042TB | 3 | 60" x 20" x 48" | 380.25 |
| 1043TB | 3 | 60" x 20" x 60" | 433.50 |
| 1045TB | 3 | 60" x 24" x 36" | 363.50 |
| 1046TB | 3 | 60" x 24" x 48" | 423.00 |
| 1047TB | 3 | 60" x 24" x 60" | 489.25 |
| 1061TB | 4 | 72" x 20" x 36" | 407.75 |
| 1062TB | 4 | 72" x 20" x 48" | 478.25 |
| 1063TB | 4 | 72" x 20" x 60" | 553.50 |
| 1065TB | 4 | 72" x 24" x 36" | 458.00 |
| 1066TB | 4 | 72" x 24" x 48" | 536.00 |
| 1067TB | 4 | 72" x 24" x 60" | 622.75 |

CAMBRO TRUSTED FOR GENERATIONS™ CAMSHELVING®

Premium Starter Unit, 4-tier, includes (4) vented polypropylene shelf plates and (2) pre-assembled post kits, speckled gray, 72"H NSF



| Item No. | Description | Price/ea. |
|--------------|-------------|-----------|
| CPU183672VS4 | 18"W x 36"L | \$328.50 |
| CPU184272VS4 | 18"W x 42"L | 368.50 |
| CPU184872VS4 | 18"W x 48"L | 382.50 |
| CPU185472VS4 | 18"W x 54"L | 422.25 |
| CPU186072VS4 | 18"W x 60"L | 449.75 |

CAN RACKS

Heavy-duty aluminum construction. Stationary design with adjustable feet. Sloped glides for automatic can retrieval.

| Item No. | Can Capacity | Price/ea. |
|----------|----------------|-----------|
| 1250 | (162) #10 Cans | \$550.50 |
| 1256 | (216) #10 Cans | 785.50 |



SECURITY UNIT

Doors open 270 ° & secure to sides, aluminum dolly with wrap-around bumper, (4) Plate casters, (2) with brake. Intermediate Shelf sold separately.



| Item No. | Dimensions | Price/ea. |
|----------|---------------------------------|-----------|
| SEC53LC | 32-1/2"W x 28-1/16"D x 68-1/2"H | \$849.75 |
| A2436NC | Intermediate Shelf for SEC53LC | 40.75 |
| SEC55LC | 50-1/2"W x 28-1/16"D x 68-1/2"H | 1,002.75 |
| A2448NC | Intermediate Shelf for SEC55LC | 47.50 |
| SEC56LC | 63-1/8"W x 28-1/16"D x 68-1/2"H | 1,076.25 |
| A2460NC | Intermediate Shelf for SEC56LC | 55.25 |

HEAVY DUTY SECURITY CART

49"W x 26-3/4"D x 71"H. Heavy-duty, three interior shelves 23-1/2" x 45-3/4", double doors with s/s hasp, replaceable s/s hinges, all welded aluminum construction, (4) 5" plate casters.



97621 \$2,696.00

HEAVY DUTY SECURITY CART

49"W x 26"D x 72"H. Heavy-duty, corrosion resistant, rust proof, primary extruded aluminum. Two interior shelves constructed of thick T-Bar's welded perpendicular to the length.



98167 \$2,418.00

ENCLOSED BUN PAN RACK

Transports a large number of pans and product. Holds (37) 18" x 26" bun pans, low-profile manual door latch, 14 gauge aluminum welded construction, 5" poly plate casters (2 with brakes)



EPC-40-X \$649.00

ALECO®

PAN RACK COVERS

| Item No. | Description | Price/ea. |
|----------|------------------------------------|-----------|
| 477414 | Economy, Clear | \$67.00 |
| 477424 | Standard, Blue w/white trim | 117.00 |
| 477434 | Heavy-duty, Bone White w/blue trim | 128.00 |





CHROMATE WIRE SHELVEING

Chromate finish.



| Shelf | | |
|----------|-----------|-----------|
| Item No. | W x D | Price/ea. |
| FF1824C | 18" x 24" | \$17.25 |
| FF1836C | 18" x 36" | 17.75 |
| FF1842C | 18" x 42" | 21.00 |
| FF1848C | 18" x 48" | 21.00 |
| FF1854C | 18" x 54" | 25.00 |
| FF1860C | 18" x 60" | 25.00 |
| FF1872C | 18" x 72" | 28.00 |
| FF2424C | 24" x 24" | 20.00 |
| FF2436C | 24" x 36" | 21.50 |
| FF2442C | 24" x 42" | 32.00 |
| FF2448C | 24" x 48" | 25.75 |
| FF2454C | 24" x 54" | 31.50 |
| FF2460C | 24" x 60" | 31.50 |
| FF2472C | 24" x 72" | 36.00 |

Stationary Post

| Item No. | Length | Price/ea. |
|----------|--------|-----------|
| FGN063C | 63" | \$7.25 |
| FGN074C | 74" | 7.75 |
| FGN086C | 86" | 9.75 |

UNIVERSAL PAN RACKS

Mix-and-match 12" x 20" and 18" x 26" pans or trays. Welded reinforced gussets keep the rack square under heavy loads. Lifetime warranty against rust and corrosion. All welded construction. Four 5" platform type swivel casters. 20-3/4"W x 69"H x 26-3/8"D. NSF Certified.



| Item No. | Pan Slides | Spacing | Price/ea. |
|----------|------------|---------|-----------|
| 1306 | 20 pair | 3" | \$591.50 |
| 1305 | 12 pair | 5" | 445.50 |

BUN PAN RACKS

All units accommodate 13" x 18", 14" x 18", and 18" x 26" pans. Welded reinforced gussets keep the rack square. Lifetime warranty against rust and corrosion, superior strength and durability guaranteed. End loading racks. 20-1/2"W x 69"H x 26"D. NSF Certified.



| Item No. | Pan Cap. | Spacing | Price/ea. |
|----------|----------|---------|-----------|
| 1330 | 30 | 2" | \$433.50 |
| 1331 | 20 | 3" | 363.50 |
| 1333 | 12 | 5" | 303.00 |



GREEN EPOXY SHELVEING

Green epoxy finish with chromate substrate. NSF



| Shelf | | |
|----------|-----------|-----------|
| Item No. | W x D | Price/ea. |
| J1836K | 18" x 36" | 19.50 |
| J1842K | 18" x 42" | 23.00 |
| J1848K | 18" x 48" | 23.50 |
| J1854K | 18" x 54" | 27.25 |
| J1860K | 18" x 60" | 27.50 |
| J1872K | 18" x 72" | 32.50 |
| J2436K | 24" x 36" | 24.25 |
| J2442K | 24" x 42" | 28.50 |
| J2454K | 24" x 54" | 34.00 |

Mobile Post

| Item No. | Length | Price/ea. |
|----------|--------|-----------|
| J63K | 63" | \$8.25 |
| J86K | 86" | 10.50 |

STEAMTABLE PAN RACKS

Extra gussets are welded in all corners to prevent "racking". Designed especially for steamtable/hotel pans. Four, one inch welds per angle guide. Lifetime warranty against rust and corrosion. All welded construction. NSF Certified. 1505: End loading unit. 16-1/4"W x 69"H x 22-3/8"D. Four stem type casters. 1507: Side loading unit. 23-7/8"W x 69"H x 27"D. Four 5" platform type casters.



| Item No. | Pan Cap. | Spacing | Price/ea. |
|----------|----------|---------|-----------|
| 1505 | 20 | 3" | \$306.25 |
| 1507 | 24 | 5" | 324.00 |



MOBILE SECURITY UNIT

Open wire construction with 2" x 2" mesh panels, (2) doors with hasps for padlock, chrome-plated finish, 5" casters, (2) swivel and (2) swivel with brakes.



| Item No. | Description | Price/ea. |
|----------|----------------------------|-----------|
| CSC2448 | 51-1/4"W x 27-1/4"D x 69"H | \$852.00 |
| 2448C | Intermediate Shelf | 50.75 |
| CSC2460 | 63-1/4"W x 27-1/4"D x 69"H | 1,042.00 |
| 2460C | Intermediate Shelf | 59.50 |



HOT FOOD MERCHANDISER

Three adjustable shelves. Interior light, front & rear sliding door. 120V, 1500W. 26"L x 18-3/8"W x 25-1/4"H.

HD-26

\$607.50/ea.



1000 WATT MICROWAVE

Low volume, interlock safety switch, 6 minute light up dial timer, audible end of cycle signal, (1) power level, accommodates 12" plate, s/s exterior. 120V/60/1ph

RMS10DS

\$235.00/ea.



MERRYPHEF MICROWAVE CONVECTION/IMPINGEMENT OVEN

High power, ventless, 12" cooking cavity, EasyTouch™ controls, USB memory, bottom-hinged door, built in catalytic converter, 208/240V/60/1ph

E2S STANDARD

CALL FOR PRICING



ELECTRIC SOUP KETTLE

Electric, adjustable heat control, stainless steel hinged no-drip lid, removable stainless steel bain marie inner pot, double wall construction. 10 qt. capacity. 120V/60/400W.

ESW-66

\$76.75/ea.



BELGIAN WAFFLE MAKER

Up to (35) 1" thick waffles per hour. Temperature control knob with (6) settings. Heavy-duty die cast housing. Includes measuring cup & drip tray. 120V/60/1, 1200W, 10.0 amps.

WW180

\$360.00/ea.



HAMBURGER MOLD

Cast aluminum, 4-1/2" diameter, adjustable.

AHM-5

\$11.00/ea.



1000 WATT MICROWAVE

Medium volume, stainless steel interior and exterior, (5) power levels, (100) memory settings, tempered glass, accommodates 14" plate. 1.2 cu. ft., 13 amps, 120V/60/1-ph. Dimensions - 13-7/8"H x 22"W x 19"D.

RCS10TS

\$480.00/ea.



1000 WATT MICROWAVE

Medium volume, stainless steel interior and exterior, 10 minute dial timer, 4 power levels. 1.2 cu. ft., 13 amps, 120V/60/1-ph.

RCS10DSE

\$357.00/ea.



Panasonic

2100 WATT SONIC STEAMER®

1.6 cu. ft. capacity. Stainless steel cabinet and cavity. 5 power levels. 8 programmable memory pads. 208V/60/1, 20 amps.

NE-2180

\$2,895.50/ea.



PANINI GRILL

An auto balancing top plate for a variety of food thickness. Thermostatically controlled up to 570°F. Heat resistant handle. 120V, 9.5"H x 17.5"W x 16"D.

WPG250

\$543.00/ea.



HOT DOG ROLLER GRILLS

Stainless steel rollers. Front and rear electronic controls. 120V/60/1.

| Item No. | Description | Price/ea. |
|-----------|-------------------------------|-----------|
| RG-07 | 12"W, 18 hot dog capacity | \$388.00 |
| RG-09 | 15-1/3"W, 24 hot dog capacity | 421.00 |
| RG-07/COV | Cover for RG-07 | 199.25 |
| RG-09/COV | Cover for RG-09 | 226.75 |



VACUUM PACKAGING MACHINES

Single stainless steel chambers.



Table Top Models

| Item No. | Chamber Size/Seal Bar | Price/ea. |
|----------|---------------------------------|-----------|
| 250-STD | 14" x 15" x 4"/12-1/2" seal bar | CALL |
| 350-STD | 20" x 18" x 6.8"/19" seal bar | CALL |



TRAY DRYING RACKS - ALL WELDED

NEWAGE

These racks conveniently stack pans and trays for drying without contact, allowing air to circulate freely for faster drying and to reduce pan-to-pan contamination. Racks are equipped with (4) 6" x 2" plate, swivel casters. Width of each rack is 28-1/2".

| Item No. | H x L | Shelves | Centers | Price/ea. |
|----------|---------------|---------|---------|------------|
| 96704 | 64" x 58-1/4" | 3 | 2.65" | \$2,135.00 |
| 96705 | 82" x 58-1/4" | 4 | 2.65" | 2,292.00 |
| 96708 | 64" x 63-1/2" | 3 | 1.4" | 2,134.75 |
| 96709 | 82" x 63-1/2" | 4 | 1.4" | 2,292.00 |



TRAY DRYING RACKS

Heavy-duty aluminum all welded construction. (4) 6" platform casters, swivel with brake. Lift out inserts that can go into the dishwasher.

| Item No. | Shelves | Tray/Pan | L x D x H | Price/ea. |
|-------------|---------|------------|-----------------------|------------|
| JZDRA-92 | 4 | Insulated | 80.5" x 22.9" x 72.7" | \$1,922.00 |
| JZDRA-156 | 4 | Cafeteria | 80.5" x 22.9" x 72.7" | 1,922.00 |
| JZDRA-115 | 5 | Seg Trays | 80.5" x 22.9" x 72.7" | 3,021.00 |
| JZDRA-220SP | 4 | Sheet Pans | 80.2" x 22.9" x 80.2" | 2,871.00 |
| *JZDRA-76TP | 4 | Steam Pans | 80.5" x 22.9" x 82.5" | 2,539.00 |

* No Inserts

JonesZylon



TOASTER

Electronic browning controls. Brushed chrome steel finish. Four extra-wide 1-3/8" slots, great for bagels. 225 slices per hour. 120V, 60 Hz. Limited one-year warranty. NSF.

WARING COMMERCIAL



WCT708 \$187.25/ea.

HEAVY-DUTY COMMERCIAL TOASTER

Uniformly toasts regular bread, Texas bread, frozen and waffles many other foods. Four 1-1/8" regular toast slots. 120V. 300 slices per hour. ETL and NSF Listed.

WCT800 \$361.00/ea.



CONVEYOR TOASTERS

Countertop design, stainless steel construction. 4-position rotary switch, removable crumb tray. 2-1/2" adjustable legs.

NEMCO FOOD EQUIPMENT



| Item No. | Description | Price/ea. |
|----------|------------------------------|-----------|
| 6800 | 120V/300 slices hr./2 slice | \$587.50 |
| 6805 | 240V/1000 slices hr./3 slice | 1,163.25 |

VOLLRATH



CONVEYOR TOASTER

Horizontal conveyor, countertop design, 1-1/2" opening x 10-1/2"W, variable speed control. 120v/60/1-ph

| Item No. | Description | Price/ea. |
|------------|----------------|-----------|
| CT2-120350 | 350 slices/hr. | \$554.25 |

Berkel

BREAD SLICER

Countertop, 1-speed, alloy carbon steel blades, steel bagging trough, removable scrap pan, on/off toggle switch with safety guard, white, 115v/60/1-ph



| Item No. | Description | Price/ea |
|-----------|-------------|----------|
| MB1/2STD | 1/2" slice | CALL |
| MB3/4STD | 3/4" slice | CALL |
| MB3/8STD | 3/8" slice | CALL |
| MB7/16STD | 7/16" slice | CALL |



HOBART**MEDIUM DUTY
MANUAL SLICER**

Manual, medium duty, angle feed, 12" carbon steel knife, no volt release, poly-v belt drive, permanent ring guard, removable anodized aluminum carriage & knife cover, top mounted sharpener, anodized aluminum finish, 120v/60/1-ph



EDGE12-11

CALL

robot coupe®**FOOD PROCESSOR**

Commercial Food Processor, 2.9 liter gray polycarbonate bowl with handle, vegetable prep attachment with external ejection, kidney-shaped opening. 120v/60/1-ph

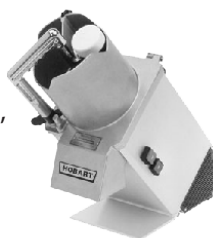


R2N

\$1,058.00/ea.

HOBART**FOOD PROCESSORS**

Angled continuous feed design, stainless steel cutting surfaces, planetary gear transmission, aluminum rubber feet.



| Item No. | Description | Price/ea. |
|----------|---------------------------|-----------|
| FP100 | Approx. 600 lb. per hour | CALL |
| FP150 | Approx. 750 lb. per hour | CALL |
| FP250 | Approx. 1000 lb. per hour | CALL |

robot coupe®**CONTINUOUS FEED COMMERCIAL
VEGETABLE PROCESSOR**

Commercial Food Processor, vegetable prep attachment with full moon shaped & one round hopper (no bowl), stainless steel base, single speed, 120v/60v1-ph



CL52

CALL

VEGETABLE PROCESSOR

High volume food processor. Includes vegetable prep attachment with stainless steel bulk feed lead & external ejection (no bowl), (1) 3mm grating disc, (1) 3mm slicing disc, (2) disc rack, stainless steel base & stand, two speeds, 208/240v/60/3-ph



CL60BULK

CALL

Globe**MEDIUM DUTY MANUAL SLICER**

Chefmate™ series medium duty compact slicer, manual, 12" diameter knife, top mounted sharpener, anodized aluminum base, gear-driven, knife ring guard, knife cover interlock. 115v/60v1-ph



GC512

\$2,675.75/ea.

Globe**LIGHT DUTY MANUAL SLICER**

Manual, 12" diameter knife, removable gravity feed food chute, top mounted sharpener, slice deflector and knife cover, belt-driven rubber feet, anodized aluminum, 115v/60/1-ph



C12

\$1,179.00/ea.

**HEAVY-DUTY
MANUAL SLICER**

13" hard chromium-plate blade, lift-arm device standard, 45° gravity feed, seamless anodized aluminum base, 110v/60/1-ph

BIZERBA

GSP V 2-150

\$2,276.00/ea.

**HEAVY-DUTY
MANUAL SLICER**

Premium Heavy Duty Slicer, manual, 13" knife, top mounted sharpener with synthetic diamond surfaces, knife cover interlock, kickstand, seamless anodized aluminum base, 1/2 HP knife motor



S13

\$3,988.25/ea.

**HEAVY-DUTY
AUTOMATIC SLICER**

Premium Heavy Duty Slicer, automatic, 13" knife, (2) speeds, (2) stroke lengths, LCD display, top mounted sharpener, knife cover interlock, lift lever, interlocked tilting carriage, seamless anodized aluminum base, 1/2 HP motor.



S13A

\$6,151.00/ea.

HOBART**HEAVY-DUTY SLICERS**

Double-action indexing cam helps ensure precision in setting the slice thickness. Top-mounted borazon stone sharpener. CleanCut knife, thin edge design improves yield. Stainless steel top cover with integrated product deflector, removable rear deflector. 120/60/1. 1 1/2 HP.

| Item No. | Description | Price/ea. |
|----------|--------------------------|-----------|
| HS6-1 | Manual slicer | CALL |
| HS7-1 | 4-Speed automatic slicer | CALL |

POTATO PEELER

Peels 15-20 pounds of potatoes in one to three minutes. 1/3 HP Motor with manual reset thermal overload protection. Satin stainless steel finish housing. 4-minute timer. Removable NSF Lexan liner. Removable 14-3/4" silicon carbide abrasive disk. Stainless steel drive shaft. Removable cam-type pressure lock-in hopper door. Heavy-duty molded polyester plastic lock-in hopper



115/60/1.

6115-1

CALL

**COMMERCIAL FOOD MIXERS**

Neoprene feet to minimize walking and rusting. Permanently lubricated planetary head and attachment hub case. Includes: stainless steel bowl, stainless steel dough hook, stainless steel wire whip, flat beater, timer. Cord and plug on 20 qt. only. UL Listed, NSF Listed.



| Item No. | Electrical Specs | Price/ea. |
|----------|-----------------------|-----------|
| V20A | 1 HP, 115V/60/1 | CALL |
| V30A | 2 HP, 115V/60/1 | CALL |
| V40A | 2 HP, 208/230V/60/1 | CALL |
| V60A | 3 HP, 208/230V/60/1 | CALL |
| V80A | 4 HP, 208/220V/60/3 | CALL |
| V100PLA | 4 HP, 208/220V/60/3 | CALL |
| V150PLA | 5.5 HP, 208/240V/60/3 | CALL |

HOBART**FOOD CUTTER**

1 HP motor. 18" stainless steel bowl with a bowl cover safety interlock. One piece burnished aluminum housing. 1725 RPM knife rotation. 20 RPM bowl rotation. Double cutlery grade stainless steel knives. Pull/Push, On/Off switch. 3" stainless steel legs with rubber feet. 115/60/1.



84186-1

CALL

POTATO PEELERS

Stainless steel hopper, cabinet, feet, peel trap, screen, disc, and discharge door. Unique wave pattern stainless steel disc.

| Item No. | Description | Price/ea. |
|----------|----------------|-----------|
| 30 VP-2 | 3/4 HP, 30 lb. | CALL |
| 50 VP-2 | 1 HP, 50 lb. | CALL |

**POTATO PEELERS**

Stainless steel construction. Double V-belt drive. Removable abrasive silicon carbide disc and lexan liner Synchronous 5-minute timer, adjustable for any increments from 1/2 minute up to 4-minutes, with 15 second markings etched on a large timer dial.



| Item No. | Description | |
|----------|----------------------------------|------|
| 6430-1 | 3/4 HP, 30-33 lb. in 1-3 minutes | CALL |
| 6460-1 | 1 HP, 50-60 lb. in 1-3 minutes | CALL |

**5 QUART MIXER**

Planetary mixer, 5 qt. bench model, 10 speed, 6 ft. cord and plug. Includes - polycarbonate splash cover, stainless steel bowl, spiral dough hook, whip & beater. Rigid cast aluminum body, easy action bowl lift.



SP5

\$690.00/ea.





MIXERS

Gear-driven transmission. 50 minute SmartTimer™ (20 minute on HL400). Four fixed speeds (three on the HL400). Open base. Large, easy-to-reach controls. Stainless steel bowl guard. UL, NSF.

| Item No. | Description | Includes | Price/ea. |
|-------------|--|---|-----------|
| HL400-1STD | 40 qt. mixer, #12 taper attachment hub, manual bowl lift | Flat beater, wire whip, dough hook, 40 qt. stainless steel bowl | CALL |
| HL600-1STD | 60 qt. mixer, power bowl lift | Flat beater, wire whip, dough hook, 60 qt. stainless steel bowl | CALL |
| HL800-1STD | 80 qt. mixer, power bowl lift | Flat beater, bowl truck, dough hook, 80 qt. stainless steel bowl | CALL |
| HL1400-1STD | 140 qt. mixer, power bowl lift | Flat beater, bowl truck, dough hook, 140 qt. stainless steel bowl | CALL |

HOBART

HOBART MIXER ATTACHMENT PARTS

WHIPS

Aluminum base, stainless steel wires.

| Item No. | For | Price/ea. |
|----------|---------|-----------|
| 20W | 20 qt. | \$79.50 |
| 30W | 30 qt. | 95.00 |
| 60W | 60 qt. | 156.50 |
| 80W | 80 qt. | 170.25 |
| 140W | 140 qt. | 208.00 |

SPIRAL DOUGH HOOK

Cast aluminum.

| Item No. | For | Price/ea. |
|----------|--------|-----------|
| 20DS | 20 qt. | \$59.50 |
| 30DS | 30 qt. | 93.50 |
| 60DS | 60 qt. | 165.25 |
| 80DS | 80 qt. | 304.00 |

FLAT BEATER/PADDLE

Aluminum base.

| Item No. | For | Price/ea. |
|----------|---------|-----------|
| 20B | 20 qt. | \$44.50 |
| 30B | 30 qt. | 77.00 |
| 60B | 60 qt. | 105.00 |
| 80B | 80 qt. | 150.25 |
| 140B | 140 qt. | 239.75 |

SHREDDERS & SLICERS

Aluminum housing. #12 hub size.

| Item No. | Set Type | Price/ea. |
|----------|----------|-----------|
| VS-12 | Slicing | \$586.50 |
| GS-12 | Grating | 510.75 |

THESE ATTACHMENTS WILL NOT FIT LEGACY MIXERS. PLEASE CALL FOR LEGACY MIXER ATTACHMENTS.

ICE MAKERS W/BINS

Available in Air Cooled and Water Cooled.



| Item No. | Description | W x D x H | Estimated Ice Production | Price/ea. |
|----------|----------------|---------------------|--------------------------|-----------|
| UDF-0190 | Dice size cube | 26" x 28.5" x 38.5" | 198 lb./24 hr. | CALL |
| UDF-0240 | Dice size cube | 26" x 28.5" x 38.5" | 215 lb./24 hr. | CALL |
| UDF-0310 | Dice size cube | 30" x 28.5" x 38.5" | 286 lb./24 hr. | CALL |



ICE MAKERS

Available in Air Cooled and Water Cooled.

| Item No. | Description | W x D x H | Estimated Ice Production | Price/ea. |
|----------|----------------|---------------------|--------------------------|-----------|
| IDT-0420 | Dice size cube | 22" x 24.5" x 21.5" | 375 lb./24 hr. | CALL |
| IDT-0450 | Dice size cube | 30" x 24" x 21.5" | 358 lb./24 hr. | CALL |
| IDT-0500 | Dice size cube | 30" x 24" x 21.5" | 400 lb./24 hr. | CALL |
| IDT-0620 | Dice size cube | 22" x 24.5" x 21.5" | 450 lb./24 hr. | CALL |
| ID-0606 | Dice size cube | 30" x 24.5" x 21.5" | 490 lb./24 hr. | CALL |
| ID-0906 | Dice size cube | 30" x 24.5" x 26.5" | 664 lb./24 hr. | CALL |
| IDT-1200 | Dice size cube | 30" x 24.5" x 29.5" | 975 lb./24 hr. | CALL |



ICE BINS

| Item No. | Description | W x D x H | Ice Capacity | Price/ea. |
|----------|----------------|-----------------|--------------|-----------|
| D-320 | Duratech Steel | 22" x 34" x 38" | 265 lb. | CALL |
| D-420 | Duratech Steel | 22" x 34" x 50" | 383 lb. | CALL |
| D-400 | Duratech Steel | 30" x 34" x 38" | 365 lb. | CALL |
| D-570 | Duratech Steel | 30" x 34" x 50" | 532 lb. | CALL |
| D-970 | Duratech Steel | 48" x 34" x 50" | 882 lb. | CALL |



PRODIGY™ MODULAR CUBERS

Prodigy™ Cubers use significantly less energy and water than other cube ice machines. The patented WaterSense adaptive purge control delivers maximum reliability by reducing scale buildup for a longer time between cleanings. Stainless steel finish.

22" CUBE ICE MACHINE
115/60/1
22"W x 24"D x 23"H



| Item No. | Ice Production Per 24 Hr. | Price/ea. |
|----------|------------------------------|-----------|
| C0322S | 356 lb. | CALL |
| C0522S | 475 lb. | CALL |

30" MODULAR CUBERS
115/60/1 - C0330 & C0530
208-230/60/1 - C0630 & C0830
30"W x 24"D x 23"H



| Item No. | Ice Production Per 24 Hr. | Price/ea. |
|----------|------------------------------|-----------|
| C0330S | 400 lb. | CALL |
| C0530S | 525 lb. | CALL |
| C0630S | 776 lb. | CALL |

STORAGE BINS

New sleek, contemporary styling!

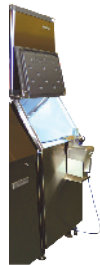
| Item No. | 24 Hr. Storage | W x D x H (with legs) | Price/ea. |
|----------|----------------|-----------------------|-----------|
| B330P | 270 lb. | 32" x 36" x 33" | CALL |
| B322S | 290 lb. | 24" x 36" x 47" | CALL |
| B530S | 420 lb. | 32" x 36" x 47" | CALL |
| B842S | 610 lb. | 42" x 34" x 44" | CALL |
| B948S | 700 lb. | 48" x 34" x 44" | CALL |



SCOOP UTILITY TETHER SYSTEM

Kit includes (1) 5' cable,
(1) security fastener and (1) lock.

| Item No. | Description | Price/ea. |
|----------|------------------|-----------|
| UTS-100L | Kit with lock | \$22.00 |
| UTS-100 | Kit without Lock | 11.50 |



REMCO MEGA SCOOP

One-piece, injection molded
polypropylene construction.
128 oz. Available in Red, Blue,
Yellow, Orange, White and
Green.

6550 \$10.50/ea.



ICE DISPENSERS

Manual fill Ice Dispenser.

| Item No. | W x D x H | Ice Capacity | Price/ea. |
|----------|---------------------|--------------|-----------|
| M45 | 15" x 28" x 24-1/4" | 45 lb. | CALL |
| M90 | 15" x 28" x 32" | 90 lb. | CALL |
| *S-150 | 23" x 31.13" x 35" | 150 lb. | CALL |
| *S-200 | 30" x 31.13" x 35" | 200 lb. | CALL |
| *S-250 | 30" x 31.13" x 41" | 250 lb. | CALL |

Water dispenser available.

*Will accommodate a top mount ice machine (optional).



BUNN

HOT WATER DISPENSER

| Item No. | Description | Price/ea. |
|------------|----------------|-----------|
| 02500.0001 | 2 Gallon/120V | \$533.25 |
| 43600.0026 | 5 Gallon/120V | 815.00 |
| 26300.0000 | 10 Gallon/240V | 1,372.50 |



WATER FILTRATION

Reduces bacterial growth,
sediments, lead, cysts, scale,
chlorine taste & odor.

| Item No. | Description | Price/ea. |
|----------|----------------|-----------|
| FXI-11 | Up to 800 lbs. | \$130.75 |
| FXI-12 | Over 800 lbs. | 171.25 |



REACH-IN REFRIGERATORS & FREEZERS

Stainless Steel Front and Sides - Refrigerators

| Item No. | Cu. Ft. | Doors | Price |
|----------|---------|-------|-------|
| GBR1P-S | 21 | 1 | CALL |
| GBR2P-S | 46 | 2 | CALL |

Stainless Steel Front and Sides - Freezers

| Item No. | Cu. Ft. | Doors | Price |
|----------|---------|-------|-------|
| GBF1P-S | 21 | 1 | CALL |
| GBF2P-S | 46 | 2 | CALL |



BLAST CHILLER FREEZER - ROLL-IN

Spec-Line Roll-In Blast Chiller with EPICON control, hold (1) 72" high rack, self-contained holding refrigeration system, remote chilling refrigeration system not included, chills 150 - 250 lbs.

| Item No. | Price |
|----------|-------|
| TBC1H-20 | CALL |



MOBILE REFRIGERATED CABINET

Cabinet accommodates 18"x 26" sheet pans. adjustable/removable tray slides, solid door(s), electronic controls with digital display, temperature range of 33°F to 38°F, stainless steel interior and exterior, full perimeter bumper, 6" casters.

| Item No. | Capacity | Doors | Price |
|----------|---------------------|-------|-------|
| URS-7 | (7) 18" x 26" Pans | 1 | CALL |
| URS-10 | (10) 18" x 26" Pans | 1 | CALL |
| URS-14 | (14) 18" x 26" Pans | 2 | CALL |
| URS-20 | (20) 18" x 26" Pans | 2 | CALL |



REFRIGERATED/HEATED CABINET

Mobile Cabinet, holds (7) 18" x 26" or (14) 12" x 20" pans. 4-1/2" spacing, adjustable to 1-1/2" increments.

| Item No. | Price |
|----------|-------|
| UHRS-7-7 | CALL |



BLAST CHILLER FREEZER - REACH-IN

ConvoChill™ Blast Chiller/Shock Freezer, single section, 154 lbs. blast chill or 120 lbs. shock freeze capacity. Stainless Steel exterior and interior.

| Item No. | Price |
|----------|-------|
| T14D | CALL |



BLAST CHILLER FREEZER - ROLL-IN

ConvoChill™ Blast Chiller/Shock Freezer, roll-in, single section, designed for remote refrigeration, 440 lbs. blast chill or 385 lbs. shock freeze capacity. Stainless Steel exterior and interior, s/s ramp.

| Item No. | Price |
|----------|-------|
| T40 | CALL |



G-SERIES REFRIGERATORS & FREEZERS

Stainless steel front and doors. Anodized aluminum interior and external sides. Self-closing doors with stay-open feature at 120°. Door locks standard on solid doors.

Stainless Steel Door Refrigerators

| Item No. | Doors | Price |
|----------|---------|-------|
| G10010 | 1 Solid | CALL |
| G20010 | 2 Solid | CALL |

Stainless Steel Door Freezers

| Item No. | Doors | Price |
|----------|---------|-------|
| G12010 | 1 Solid | CALL |
| G22010 | 2 Solid | CALL |



AIR CURTAIN REFRIGERATOR

Maintains temperature for up to 1-1/2 hours with door open, digital display, hinged door, full perimeter bumper, stainless steel construction, 6" casters (2) rigid & (2) swivel with brake.

| Item No. | Price |
|----------|-------|
| R-AS-10 | CALL |





| Item No. | Description | Doors |
|----------|--------------|-------|
| T-23-HC | Refrigerator | 1 |
| T-23F-HC | Freezer | 1 |
| T-49-HC | Refrigerator | 2 |
| T-49F-HC | Freezer | 2 |

Call
for
Pricing!



ARMOUR™ HEAVY DUTY MOBILE REFRIGERATOR

Full height, Heavy Duty insulated mobile refrigerator with automatic defrost. Correctional package available.



| Item No. | Description | Price |
|----------|------------------------------|-------|
| C5R9-SBA | Adjustable bottom lip slides | CALL |
| C5R9-SFA | Fixed lip slides | CALL |
| C5R9-SLA | Adjustable lip slides | CALL |



ARMOUR™ HEATED MOBILE INSULATED CABINET

Transport Armour™ heavy-duty insulated mobile heated cabinet, full height, top mounted analog thermometer. Correctional package available.



| Item No. | Description | Price |
|-----------|------------------------------|-------|
| C5T9-ASBA | Adjustable bottom lip slides | CALL |
| C5T9-ASFA | Fixed lip slides | CALL |
| C5T9-ASLA | Adjustable lip slides | CALL |

BUFFET WARMER

Glo-Ray® Buffet Warmer, counter model, pass thru design, hardcoat aluminum, double acrylic sneeze guards, (2) bulbs, holds (2) 12" x 20" pans, heated base.



| Item No. | Price |
|----------|------------|
| GR2BW-30 | \$1,702.00 |



WALK-IN COOLER/FREEZER

Walk-In Coolers, Walk-In Freezers or Walk-In Cooler/Freezers. Indoor or outdoor walk-in's available. Call today for your custom walk-in quote.



STRIP CURTAINS

Clear-Flex II® Strip Curtain, freezer/reinforced, MaxBullet aluminum mounting system. 6" or 8" strips.

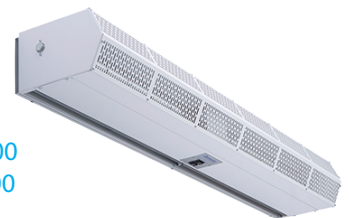


| Item No. | Dimensions | Strip Size | Price |
|----------|-------------|------------|----------|
| 440045 | 40"W x 84"H | 8" x .080 | \$157.00 |
| 440042 | 40"W x 84"H | 6" x .060 | 161.00 |

LOW PROFILE 8 AIR CURTAIN

For mount heights up to 8'

| Item No. | Width | Price |
|-------------|-------|----------|
| CLC08-1036A | 36" | \$680.00 |
| CLC08-1048A | 48" | 738.00 |



LOW PROFILE 10 AIR CURTAIN

For mount heights up to 10'

| Item No. | Width | Price |
|-------------|-------|----------|
| CHD10-1036A | 36" | \$762.00 |
| CHD10-1048A | 48" | 793.00 |

AUTOMATIC DOOR SWITCH

Activates air curtain when door opens

| Item No. | Price |
|-------------|---------|
| 9503SD020-P | \$41.00 |



E-CHEF™ HOT FOOD TABLES

Stainless steel top and sides. Individual wells with infinite controls. 8" polyethylene cutting board. Drains, manifold and common gate valve. Models on casters standard with cord and plug.



| Item No. | Hot Food Wells | Price/ea. |
|----------|----------------|-----------|
| EHEI36C | 2 | CALL |
| EHEI48C | 3 | CALL |
| EHEI60C | 4 | CALL |
| EHEI74C | 5 | CALL |

HEATED SERVING COUNTERS

Electric hot food serving counter, holds 12" x 20" x 6" pans. Comes with cord and plug and 5" diameter swivel casters. 120/208-230V, 60 Hz, single phase.



| Item No. | Wells | Price/ea. |
|----------|-------|-----------|
| SH-2-NU | 2 | CALL |
| SH-3-NU | 3 | CALL |
| SH-4-NU | 4 | CALL |
| SH-5-NU | 5 | CALL |
| SH-6-NU | 6 | CALL |

* Picture shown with optional tray slide and sneezeguard

COLD FOOD SERVING COUNTERS

Reinforced stainless steel enclosed base. Designed for 4"D pans, drain w/valve and 5" casters. Self contained refrigeration. 115V/60/1.



| Item No. | Description | Price/ea. |
|-----------|-------------|-----------|
| SCSC-36-B | 36" x 30" | CALL |
| SCSC-50-B | 50" x 30" | CALL |
| SCSC-60-B | 60" x 30" | CALL |
| SCSC-74-B | 74" x 30" | CALL |
| SCSC-96-B | 96" x 30" | CALL |

WARMING DRAWER

Free standing warming drawer, includes (1) standard 6" deep pan, stainless steel construction, thermostatic controls, 4" legs.



| Item No. | Description | Price/ea. |
|----------|------------------|-----------|
| HDW-1 | Single Hotel Pan | CALL |
| HDW-2 | Double Hotel Pan | CALL |

HOT FOOD TABLES- SLIMLINE

Stainless steel construction, vertical corner bumpers, insulated wells with individual heat controls, 4" heavy duty swivel casters (2with brakes).



| Item No. | Hot Food Wells | Price/ea. |
|----------|----------------|-----------|
| TF-612 | 2 | CALL |
| TF-613 | 3 | CALL |

HOT FOOD TABLES- SLIMLINE

Stainless steel front & end panels, thermostatic controls with indicator lights, open cabinet base, swivel casters (2 locking)



| Item No. | Hot Food Wells | Price/ea. |
|----------|----------------|-----------|
| DXDHF2SL | 2 | CALL |
| DXDHF3SL | 3 | CALL |

SERVWELL® HOT FOOD TABLES

Thermoset fiber-reinforced resin wells with brass drain valves, individual thermostatic controls, open base with stainless undershelf.



| Item No. | Description | Price/ea. |
|----------|-------------|-----------|
| 38003 | (3) well | CALL |
| 38004 | (4) well | CALL |
| 38099 | Casters | CALL |

MOBILE ICE COOLED SERVING COUNTER

Insulated ice pan is 7" deep and is standard with the following: perforated false bottom, drain with valve and casters. Enclosed base with no under storage.



| Item No. | Price/ea. |
|-----------|-----------|
| SCI-36-NU | CALL |
| SCI-50-NU | CALL |
| SCI-60-NU | CALL |
| SCI-74-NU | CALL |
| SCI-96-NU | CALL |

* Picture shown with optional tray slide and sneezeguard



ELECTRIC COUNTERTOP STEAMER

SteamChef™ 6 Convection Steamer, electric boilerless, countertop, 1 compartment, (6) full size pan capacity, SureCook controls, digital timer & manual (continuous steaming) bypass switch, left-hand hinged door, controls on right, automatic drain & water level controls, stainless steel exterior, 4" adjustable legs.



22CET6.1

CALL

STEAMCRAFT® GEMINI 10

Pressureless steamer with 2 compartments. Stainless steel construction. Each compartment has its own individual generator and electro mechanical. 60 minute timer. 6" stainless steel legs. Each compartment holds (5) 12" x 20" x 2-1/2" pans.



| Item No. | Description | Price/ea. |
|------------|-------------|-----------|
| 24CEA10 | Electric | CALL |
| 24CGA10.2* | Gas | CALL |

* Please specify type of gas when ordering.



COMBI OVEN

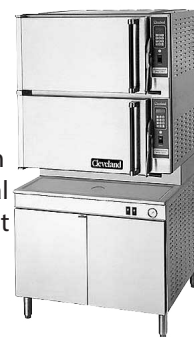
CONVOTHERM Combi Oven/Steamer, 9" easyTouch control panel, 20 stages each and 399 cooking recipes storage, (4) cooking modes: hot air, steam, combi-steam and retherm, multi-point core temperature probe, five speed auto reversing fan, anti-microbial hygienic door handle, pull-out spray hose, ConvoClean+ fully automatic hands-free cleaning system, stainless steel construction.



| Item No. | Description | Capacity | Price/ea. |
|--------------|---------------------|--------------------------------------|-----------|
| C4 ET 6.20ES | Electric/boilerless | (6) 18" x 26" or (12) 12" x 20" pans | CALL |
| C4 ET 6.20EB | Electric | (6) 18" x 26" or (12) 12" x 20" pans | CALL |
| C4 ET 6.20GS | Gas/boilerless | (6) 18" x 26" or (12) 12" x 20" pans | CALL |
| C4 ET 6.20GB | Gas | (6) 18" x 26" or (12) 12" x 20" pans | CALL |

CONVECTIONPRO STEAMERS

Capacity for sixteen 2-1/2" x 12" x 20" steam table pans, solid state controls operate water level and safety functions. Steam generator with automatic water fill on start-up. For each cooking compartment: 60 minute mechanical timer and separate bypass switch for constant steaming. Type 304 stainless steel cooking compartment.



| Item No. | Description | Price/ea. |
|------------|--------------------------|-----------|
| 36CEM1648 | Electric powered, 48 kW | CALL |
| 36CGM16300 | Gas powered, 300,000 BTU | CALL |



TILTING BRAISING PANS

Synergy steam braising pan, manual controls with power switch, manual tilt, 5/8" thick stainless steel cooking surface, adjustable counterbalanced cover with condensate drop shield, etched gallon markings and cover vent.



| Item No. | Description | Price/ea. |
|----------|---------------------|-----------|
| BLP-30G | Gas, 30 Gallon | CALL |
| BLP-40G | Gas, 40 Gallon | CALL |
| BLT-30E | Electric, 30 Gallon | CALL |
| BLT-40E | Electric, 40 Gallon | CALL |

WATER FILTRATION

Reduces bacterial growth, sediments, lead, cysts, scale, chlorine taste & odor.



| Item No. | Price/ea. |
|----------|-----------|
| FXI-11 | \$130.75 |



BRAISING PAN TILTING SKILLETS

PowerPan™ Tilting Skillet, bead blasted cooking surface, with easy manual hand tilt, spring-assisted cover with vent, gallon & liter markings, food strainer, stainless steel construction with open leg frame.



| Electric | | |
|----------|-------------|-----------|
| Item No. | Description | Price/ea. |
| SEL30T1 | 30 Gallon | CALL |
| SEL40T1 | 40 Gallon | CALL |

| Gas | | |
|----------|-------------|-----------|
| Item No. | Description | Price/ea. |
| SGL30T1 | 30 Gallon | CALL |
| SGL40T1 | 40 Gallon | CALL |

DURAPAN™ TILTING SKILLETS

Modular open base, standard with hydraulic hand tilt with quick lowering feature, stainless steel construction, includes spring-assisted cover and gallon markings, food strainer and stainless steel level adjustable feet.



| Electric | | |
|----------|-------------|-----------|
| Item No. | Description | Price/ea. |
| SEL30TR | 30 Gallon | CALL |
| SEL40TR | 40 Gallon | CALL |

| Gas | | |
|----------|-------------|-----------|
| Item No. | Description | Price/ea. |
| SGL30TR | 30 Gallon | CALL |
| SGL40TR | 40 Gallon | CALL |



HIGH EFFICIENCY ELECTRIC FRYER

Floor model fryer, 50 lb. capacity, open frypot design, automatic melt cycle, boil out temperature control, temperature probe, includes: rack-type basket support, basket hanger and twin baskets, stainless steel frypot, door and cabinet.



RE17 **CALL**

FRY BASKETS

One-piece construction,



| Item No. | Description | Price |
|----------|---------------------------|---------|
| FB-126PH | 12-7/8" x 6-1/2" x 5-1/8" | \$14.00 |
| FB-135PH | 13-1/4" x 5-3/4" x 5-3/4" | \$14.00 |



SUPER RUNNER VALUE GAS FRYERS

Floor model fryer, durable temperature probe, millivolt control system, includes: rack-type basket support, basket hanger and twin baskets, stainless steel frypot, front & door, aluminized sides, 6" stainless steel legs.



| Item No. | Oil Capacity | Price/ea. |
|----------|--------------|-----------|
| SR142G | 43 lb. | CALL |
| SR162G | 75 lb. | CALL |



PERFORMANCE GAS FRYER

Floor model fryer, 80 lb. capacity, for chicken and fish, open frypot design, centerline fast-action temperature probe, thermostat knob on front panel, includes: rack-type basket support, covers, basket hanger and twin baskets, flue deflector, s/s frypot, door and cabinet, 150,000 BTU



MJ1CF **CALL**



HIGH-PRODUCTION ELECTRIC FRYER

Stainless steel frypot, front and cabinet sides, 80-lb. capacity, open-pot design, digital controller, automatic melt cycle, (2) baskets, 6" legs.



RE180-17 **CALL**

PORTABLE OIL FILTER

50 lb. oil capacity, reversible pump, cover and fold down handle, 4GPM filter pump and 5' return hose included, filter starter kit, stainless steel pan & pump housing, swivel casters, 1/3HP, NSF



| Item No. | Price/ea. |
|----------|-----------|
| PF50 | CALL |

PORTABLE BULB WARMERS

Mirror polished stainless steel shade around heat bulb offers a very upscale presentation.



| Item No. | Price/ea. |
|----------|-----------|
| DW-1A | \$190.00 |
| HL-2 | 112.75 |



MASTER SERIES HEAVY-DUTY GAS RANGE

Two-piece Starfire burners, removable heads, standard oven, piezo ignition, drip tray, porcelainized oven interior, stainless steel front and sides, 6" chrome steel adjustable legs.



| Item No. | Description | Price/ea. |
|----------|----------------|-----------|
| M44R | 4 Open burners | CALL |
| M43R | 6 Open burners | CALL |



STARFIRE PRO SERIES GAS RANGE

Cast iron top and ring grates, stainless steel front, sides, plate rail, 2-piece back guard and shelf, 6" stainless steel legs with adjustable feet.



| Item No. | Description | Price/ea. |
|----------|--|-----------|
| G36-6R | 36" wide, 1 standard oven, 6 burners | CALL |
| G60-10RR | 60" wide, 2 standard ovens, 10 burners | CALL |



MEDIUM DUTY GAS RANGE

Endurance™ range, lift-off burner heads, standard oven(s), stainless steel front, sides, backriser, and high shelf, fully MIG welded frame, 6" adjustable legs.



| Item No. | Description | Price/ea. |
|------------|---|-----------|
| 36S-6B | 36", 6 burners, 1 std oven | CALL |
| 60SS-10B | 60", 10 burners, 2 std ovens | CALL |
| 60SS-6B24G | 60", 6 burners, 2 std ovens, w/24" manual griddle | CALL |



IMPINGER® COUNTERTOP CONVEYOR OVEN

Stainless steel body, stackable to 2 high, temperature range from 200°F to 550°F. 31" L conveyor belt.



| Item No. | Price/ea. |
|-----------|-----------|
| 2501/1346 | CALL |



CHEFMATE™ COUNTERTOP GAS HOTPLATE

Stainless steel construction, adjustable pilots with front access, cool-to-touch front edge, adjustable legs.



| Item No. | Description | Price/ea. |
|----------|-------------|-----------|
| C12HT | 2 Burners | \$615.00 |
| C24HT | 4 Burners | 904.00 |

COUNTERTOP ELECTRIC GRIDDLE

Flat griddle surface, temperature control from 120°F to 570°F, bottom mounted grease collection pan, 3" sides and back splash, stainless steel construction, 120v/60/1



| Item No. | Description | Price/ea. |
|----------|---------------|-----------|
| GRID-16 | 15-1/2" x 16" | \$392.50 |
| GRID-24 | 15-1/2" x 24" | 552.50 |
| GRID-30 | 15-1/2" x 30" | 636.25 |

PORTABLE GRIDDLE TOP



| Item No. | Description | Price/ea. |
|----------|--------------------|-----------|
| 76-1152 | Covers (2) Burners | \$ 78.00 |
| 76-1145 | Covers (4) Burners | 121.75 |

ELECTRIC GRIDDLES

Countertop griddle, 3/4" thick smooth polished steel griddle plate, thermostatic controls, stainless steel front and sides, 4" legs.



| Item No. | Width | Price/ea. |
|----------|-------|-----------|
| E24-24G | 24" | CALL |
| E24-36G | 36" | CALL |
| E24-48G | 48" | CALL |
| E24-60G | 60" | CALL |
| E24-72G | 72" | CALL |

COUNTERTOP COOKING EQUIPMENT STAND

Open base with shelf, stainless steel, swivel casters (front locking).



| Item No. | Width | Price/ea. |
|----------|-------|-----------|
| A4528796 | 24" | CALL |
| A4528351 | 36" | CALL |
| A4528798 | 48" | CALL |
| A4528800 | 60" | CALL |
| A4528802 | 72" | CALL |

OUTDOOR GAS CHARBROILER GRILL

Stainless steel front, sides, back & service shelf, aluminized steel construction, stainless steel radiants, water tubs, heavy duty cooking grids, steel legs with 6" casters, complete gas system, (2) 40 pound tanks in removable tank cart.



| Item No. | Width | Price/ea. |
|----------|-------|-----------|
| LPAGA-60 | 60" | CALL |

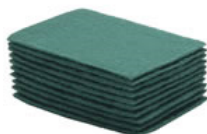


GRIDDLE BRICK/BRICK HOLDER

| Item No. | Description | Price |
|----------|-------------------------------|-------------|
| GBH-2 | Grill Brick Holder | \$ 4.00/ea. |
| GBK-348 | Grill Brick, 3-1/2" x 4" x 8" | 19.50/dz. |

SCOUR PADS

General purpose pads for cleaning pots and pans, cooking utensils, equipment, floors, walls and counters. Green.



| Item No. | Description | Price/bx. |
|----------|----------------------------------|-----------|
| ACS-S096 | 6" x 9", medium duty, 60 per box | \$16.00 |

MASTER™ CONVECTION OVENS

Standard depth, (2) speed fan, Master 200 solid state controls with 1 hour timer, (6) chrome plated oven racks per cavity, stainless steel construction.



| Item No. | Description | Price/ea. |
|-------------|-----------------------|-----------|
| MCO-GS-10-S | Gas, Single deck | CALL |
| MCO-GS-20-S | Gas, Double deck | CALL |
| MCO-ES-10-S | Electric, Single deck | CALL |
| MCO-ES-20-S | Electric, Double deck | CALL |

COUNTERTOP GAS GRIDDLES

Heavy-duty, gas griddle, 1" thick smooth steel griddle plate, snap action thermostatic controls, piezo pilot igniters, 4" front grease trough, stainless steel front, sides and back, 4" adjustable feet.



| Item No. | Width | Price/ea. |
|--------------|-------|-----------|
| GTGG24-GT24M | 24" | CALL |
| GTGG36-GT36M | 36" | CALL |
| GTGG48-GT48M | 48" | CALL |
| GTGG60-GT60M | 60" | CALL |
| GTGG72-GT72M | 72" | CALL |

SPARTA® BROILER BRUSH

30-1/2"L, treated wooden head, two-sided 1" stainless steel end-scraper, wood handle.



| Item No. | Price/ea. |
|----------|-----------|
| 4029000 | \$31.00 |



GRIDDLE PADS/PAD HOLDER

| Item No. | Description | Price |
|----------|-------------------------|-------------|
| 4071200 | Grill Pad Holder | \$15.00/ea. |
| 4071100 | Grill Pads, 10 per pack | 8.25/pk. |



CONVECTION OVENS

Standard depth, (2) speed fan, solid state controls with 1 hour timer, (5) wire racks per cavity, interior light, stainless steel construction. Casters are optional



| Item No. | Description | Price/ea. |
|----------|-----------------------|-----------|
| BES/17SC | Electric, Single deck | CALL |
| BES/27SC | Electric, Double deck | CALL |
| BGS/13SC | Gas, Single deck | CALL |
| BGS/23SC | Gas, Double deck | CALL |



CONVECTION OVENS

Capacity (5) 18" x 26" pans per compartment, solid state digital controls, 2-speed fan, interior light, simultaneous operated doors, stainless steel construction. Available with solid doors vs. glass.



| Item No. | Description | Price/ea. |
|----------------|-------------------------|-----------|
| DFG-100 SGL | Gas/Standard Depth | CALL |
| DFG-100 DBL | Gas/Standard Depth | CALL |
| DFG-200 SGL | Gas/Bakery Depth | CALL |
| DFG-200 DBL | Gas/Bakery Depth | CALL |
| MARK V-100 SGL | Electric/Standard Depth | CALL |
| MARK V-100 DBL | Electric/Standard Depth | CALL |
| MARK V-200 SGL | Electric/Bakery Depth | CALL |
| MARK V-200 DBL | Electric/Bakery Depth | CALL |



STATIONARY STEAM KETTLES

Reinforced rim, includes cover, 2" draw-off with 1/4" strainer, temperature 150° to 270° F, 2/3 jacketed body, 316 stainless steel liner, stainless steel construction, tubular stainless steel tri legs.



| Item No. | Description | Price/ea. |
|----------|---------------------|-----------|
| KLS-40G | 40 Gallon, Gas | CALL |
| KLS-40E | 40 Gallon, Electric | CALL |
| KLS-60G | 60 Gallon, Gas | CALL |
| KLS-60E | 60 Gallon, Electric | CALL |



CONVECTION OVENS - GAS

TruVection Convection Oven, low-profile, triple-deck, electronic ignition, 150°F-550°F solid state thermostatic controls, includes (3) racks per oven.



| Item No. | Price/ea. |
|-----------|-----------|
| TVGS/32SC | CALL |



INDUCTION COUNTERTOP RANGE

Digital controls, ceramic glass top, adjustable temperature to 460°F, self-checking auto shutoff, safety overheating sensor, heavy duty stainless steel, 120v/60/1-ph



| Item No. | Price/ea. |
|-----------|-----------|
| IND-E120V | \$196.50 |

COUNTERTOP CARVING STATION

39" vinyl-coated flex arm, 4" diameter base, (1) flared rim perforated shade, (1) 18" x 26" drip pan and (1) 16" x 24" maple cutting board, (1) 250 watt red bulb, 110-120v/60/1-ph



| Item No. | Price/ea. |
|-----------|-----------|
| HL8195B00 | \$386.00 |

GAS CONNECTOR KIT - MOBILE

48" long, covered stainless steel braid, coated with blue antimicrobial PVC, 1 SnapFast® quick disconnect, 1 full port valve, (2) 90 elbows, coiled restraining cable with hardware.



| Item No. | Inside Diameter | Price/ea. |
|------------|-----------------|-----------|
| 1650KIT48 | 1/2" | \$136.50 |
| 1675KIT48 | 3/4" | 160.00 |
| 16100KIT48 | 1" | 233.50 |

GAS CONNECTOR KIT - STATIONARY

48" long, coated with yellow antimicrobial PVC, 1 full port valve (2) 90° elbows and NPFS connector.



| Item No. | Inside Diameter | Price/ea. |
|--------------|-----------------|-----------|
| 1650NPKIT48 | 1/2" | \$49.00 |
| 1675NPKIT48 | 3/4" | 73.00 |
| 16100NPKIT48 | 1" | 99.50 |



STATIONARY KETTLES

Self-contained, 2/3 steam jacket, floor mounted control console supports, electronic ignition, stainless steel finish, flanged feet, 2" tangent draw-off with strainer, spring-assisted cover.

Gas Kettles

| Item No. | Description | Price/ea. |
|----------|------------------|-----------|
| KGL25 | 25 Gallon | CALL |
| KGL40 | 40 Gallon | CALL |
| KGL40SH | 40 Gallon, short | CALL |
| KGL60 | 60 Gallon | CALL |
| KGL60SH | 60 Gallon, short | CALL |
| KGL80 | 80 Gallon | CALL |
| KGL100 | 100 Gallon | CALL |



Electric Kettles

| Item No. | Description | Price/ea. |
|----------|------------------|-----------|
| KEL25 | 25 Gallon | CALL |
| KEL30 | 30 Gallon | CALL |
| KEL40 | 40 Gallon | CALL |
| KEL40SH | 40 Gallon, short | CALL |
| KEL60 | 60 Gallon | CALL |
| KEL60SH | 60 Gallon, short | CALL |
| KEL80 | 80 Gallon | CALL |
| KEL100 | 100 Gallon | CALL |



IMPERIAL ELECTRIC BOOSTER HEATERS

Combines quality construction and rugged dependability to provide up to 573 GPH of sanitizing rinse water. Stainless steel front panel and powder-coated silver-gray hammertone body, 6" plastic non-adjustable legs, Castone tank.



| Item No. | Description | Price/ea. |
|----------|-------------|-----------|
| S-24 | 24 kW | CALL |
| S-30 | 30 kW | CALL |
| S-36 | 36 kW | CALL |
| S-40 | 40.5 kW | CALL |
| S-54 | 54 kW | CALL |

CLEAN DISHTABLES

16 gauge, 304 stainless steel, 8" backsplash, 30" wide.



| Item No. | Description | Price/ea. |
|--------------|--------------------|-----------|
| CDTR-48-16/3 | Left to Right, 48" | \$442.00 |
| CDTL-48-16/3 | Right to Left, 48" | 442.00 |
| CDTR-72-16/3 | Left to Right, 72" | 665.75 |
| CDTL-72-16/3 | Right to Left, 72" | 665.75 |

TILTING KETTLES

Self-contained, 2/3 steam jacket, floor mounted control console supports, electronic spark ignition, stainless steel exterior finish, flanged feet. Cover and draw-off is optional.

Gas Kettles

| Item No. | Description | Price/ea. |
|----------|-------------|-----------|
| KGL25T | 25 Gallon | CALL |
| KGL40T | 40 Gallon | CALL |
| KGL60T | 60 Gallon | CALL |
| KGL80T | 80 Gallon | CALL |



Electric Kettles

| Item No. | Description | Price/ea. |
|----------|------------------|-----------|
| KEL25T | 25 Gallon | CALL |
| KEL40T | 40 Gallon | CALL |
| KEL40TSH | 40 Gallon, short | CALL |
| KEL60T | 60 Gallon | CALL |
| KEL60TSH | 60 Gallon, short | CALL |
| KEL80T | 80 Gallon | CALL |
| KEL100T | 100 Gallon | CALL |



COMPACT ELECTRIC BOOSTER HEATERS

The Compact Electric Booster Heater provides all the 180°F final rinse water required to sanitize and flash-dry dishes and flatware. Stainless steel front panel and powder-coated silver-gray hammertone body, 6" plastic non-adjustable legs, Castone tank.



| Item No. | Description | Price/ea. |
|----------|-------------|-----------|
| C-24 | 24 kW | CALL |
| C-30 | 30 kW | CALL |
| C-36 | 36 kW | CALL |
| C-45 | 40.5 kW | CALL |
| C-54 | 54 kW | CALL |

SOILED DISHTABLES

16 gauge, 304 stainless steel, 8" backsplash, 20" x 20" pre-rinse sink, 30" wide.



| Item No. | Description | Price/ea. |
|--------------|--------------------|-----------|
| SDTR-48-16/3 | Right to Left, 48" | \$804.00 |
| SDTL-48-16/3 | Left to Right, 48" | 804.00 |
| SDTR-72-16/3 | Right to Left, 72" | 915.00 |
| SDTL-72-16/3 | Left to Right, 72" | 915.00 |



OPTICLEAN™ RACKS

19-3/4" x 19-3/4". NSF Listed. Carlisle Blue.

| Item No. | Description | Case Pack | Price/ea. |
|----------|----------------------------|-----------|-----------|
| RF14 | Combination/flatware rack | 6 | \$16.75 |
| RB14 | Open/bowl rack | 6 | 16.75 |
| RG36-114 | Glass rack, 36-compartment | 4 | 28.50 |
| RP14 | All purpose peg rack | 6 | 16.75 |
| RTP14 | Peg rack, extra tall pegs | 6 | 17.50 |



CONVEYOR DISHMACHINE

High temperature sanitizing, single tank design, adjustable conveyor speed, approximately (225) racks/hour capacity. 25"H clearance through machine, stainless steel construction, electric tank heat, vent fan control.



AJX-44CE [CALL](#)



DOOR TYPE DISHMACHINE

Double rack, high temperature with built-in booster heater, accommodates (2) 20" x 20" racks. fully automatic operation, automatic push-handle cycle start, Auto-Safe temperature control, double wall stainless steel construction.



DV 200.2 [CALL](#)



CONVEYOR DISHMACHINE

Advansys™ model, single tank, insulated hinged doors, stainless steel enclosure panels, low temperature and dirty water indicators.



| Item No. | Description | Price/ea. |
|----------|--------------------------|----------------------|
| CL44EN | 44"L, 202 racks per hour | CALL |
| CL64EN | 64"L, 342 racks per hour | CALL |



TEMPSTAR®

Door type dishwasher, high temperature electric heat with built-in booster, universal (straight-thru/corner) type, approximately (58) racks/hour capacity, stainless steel exterior.



TempStar® [CALL](#)



TRAY WASHER

Trac Tray Washer, high temperature sanitizing, single tank, approximately (528) trays/hour capacity, automatic tank fill, stainless steel frame, legs and feet.



TRAC 321-2 [CALL](#)



CONVEYOR DISHMACHINE

High temperature, no booster, single tank design (wash), CrossFire® wash system, approximately (233) racks/hour capacity, stainless steel frame, legs & feet, electric immersion or steam injector tank heat.



ADMIRAL 44-4 [CALL](#)



UNDERCOUNTER DISHMACHINE

Advansys™ Dishwasher, high temperature sanitizing, 3 selectable cycles - light, normal and heavy duty. NSF Certified pot and pan cycle on heavy cycle. Automatic delime cycle, clogged wash arm alert.



LXER-2 [CALL](#)



FAUCETS

DECK MOUNT

| Item No. | Description | Price/ea. |
|---------------|-----------------------------|-----------|
| LFF-DST4-S08S | 4" centers/8" swivel spout | \$146.50 |
| LFF-DST4-S10S | 4" centers/10" swivel spout | 148.50 |
| LFF-DST4-S12S | 4" centers/12" swivel spout | 149.50 |
| LFF-DST8-S08S | 8" centers/8" swivel spout | 161.75 |
| LFF-DST8-S10S | 8" centers/10" swivel spout | 162.75 |
| LFF-DST8-S12S | 8" centers/12" swivel spout | 164.00 |

WALL MOUNT

| Item No. | Description | Price/ea. |
|---------------|-----------------------------|-----------|
| LFF-WST8-S08S | 8" centers/8" swivel spout | \$121.25 |
| LFF-WST8-S10S | 8" centers/10" swivel spout | 121.25 |
| LFF-WST8-S12S | 8" centers/12" swivel spout | 114.75 |

HYDRO-FORCE™ REPLACEMENT PARTS

| Item No. | Description | Price/ea. |
|----------|----------------|-----------|
| LFFRMK-W | Wall mount kit | \$16.50 |
| LFFRMK-D | Deck mount kit | 22.00 |



HYDRO-FORCE™ PRE-RINSE ASSEMBLY

Nominal centers w/bracket.
Spring action flexible gooseneck,
self closing valve, with spray head.

| Item No. | Description | Price/ea. |
|----------|-----------------------|-----------|
| LFP-DS4B | 4" centers/deck mount | \$281.00 |
| LFP-WS8B | 8" centers/wall mount | 270.00 |

HYDRO-FORCE™ PRE-RINSE REPLACEMENT HOSE

| Item No. | Description | Price/ea. |
|-----------|-------------|-----------|
| LFPRH-G44 | 44" | \$51.00 |

WATER FILTRATION

Reduces bacterial growth,
sediments, lead, cysts, scale,
chlorine taste & odor.

| Item No. | Description | Price/ea. |
|----------|-------------|-----------|
| FXI-11 | 10" | \$130.75 |
| FXI-12 | 20" | 171.25 |



HAND SINK

Hand Sink, wall mount w/bracket,
14" x 10" front-to-back x 6" deep
compartment, splash mount gooseneck
faucet, stainless steel construction.



| Item No. | Description | Price/ea. |
|----------|--------------------|-----------|
| HS-2L | No side splash | \$129.50 |
| HS-26L | With side splashes | 185.75 |



HAND SINK

Wall model, with backsplash, stainless
steel construction, splash mount
gooseneck faucet.



| Item No. | Description | Price/ea. |
|------------|-----------------------------|-----------|
| HSA-10-F | 14-3/4" x 18-7/8" x 12-3/4" | \$229.75 |
| HSAN-10-F* | 8" x 12" x 14-1/4" | 337.50 |

* Space-saver hand sink



PHYSICALLY CHALLENGED HAND SINK

Wall model, 14" long x 16" front-to-back
x 6-1/4" deep, deck mounted faucet with
wrist handles, deck mounted soap dispenser
(pump), basket drain, wall brackets.



| | |
|---------|--------------|
| 7-PS-25 | \$938.50/ea. |
|---------|--------------|

GAS CONNECTOR KIT - MOBILE

48" long, covered stainless steel braid,
coated with blue antimicrobial PVC,
1 SnapFast® quick disconnect,
1 full port valve, (2) 90 elbows,
coiled restraining cable with hardware.



| Item No. | Inside Diameter | Price/ea. |
|------------|-----------------|-----------|
| 1650KIT48 | 1/2" | \$136.50 |
| 1675KIT48 | 3/4" | 160.00 |
| 16100KIT48 | 1" | 233.50 |

GAS CONNECTOR KIT - STATIONARY

48" long, coated with yellow antimicrobial
PVC, 1 full port valve (2) 90° elbows and
NPFS connector.



| Item No. | Inside Diameter | Price/ea. |
|--------------|-----------------|-----------|
| 1650NPKIT48 | 1/2" | \$49.00 |
| 1675NPKIT48 | 3/4" | 73.00 |
| 16100NPKIT48 | 1" | 99.50 |



POTATO BRUSH

Medium firm polyester bristles for aggressive cleaning. 5-3/4" length.

4041202 \$5.25/ea.



VEGETABLE BRUSH

Stiff polyester bristles. 9-1/2", circle shape.

4016402 \$8.50/ea.



SPARTA® ALL PURPOSE UTILITY SCRUB BRUSHES

Multiple trim angles on bristles give you better surface contact for more thorough cleaning. Plastic handles and crimped stapleset polyester bristles.

| Item No. | Size | Price/ea. |
|----------|------|-----------|
| 4054102 | 8" | \$6.75 |
| 4050102 | 20" | 10.25 |



SPARTA® CLEAN-UP BRUSHES

Thick "pistol grip" block handle and short, stiff bristles for really tough cleaning. Rugged construction with stapleset secure nylon bristles.

| Item No. | Size | Price/ea. |
|----------|------|-----------|
| 4054602 | 8" | \$10.25 |
| 4050000 | 20" | 12.00 |



SPARTA® KITCHEN BRUSH

6" handle, polypropylene block, polyester bristles. Available colors: red, blue, white, yellow, green & brown.

40521 \$6.75/ea.



SCRATCH BRUSH

Carbon tempered steel bristles, hanging loop, pistol grip, plastic handle.

| Item No. | Description | Price/ea. |
|----------|--------------|-----------|
| 4067200 | With scraper | \$8.25 |
| 4067000 | No scraper | 5.00 |



FLOOR SWEEPS

Use with threaded handle.

| Item No. | Description | Price/ea. |
|----------|---------------------------------|-----------|
| 4188000 | 18" Plastic Block - Fine/Medium | 12.00 |
| 4188100 | 24" Plastic Block - Fine/Medium | 17.25 |



SPARTA® KETTLE VALVE BRUSH

28" long with 1-3/8" stiff polyester bristles.

4015000 \$6.50/ea.



ROUND BRUTE® CONTAINERS

All-plastic, professional-grade construction will not rust, chip or peel; resists dents. Built-in handles allow easy, nonslip lifting and anti-jam nesting.



| Item No. | Gallons | Color | Price/ea. |
|----------|---------|--------------------------|-----------|
| 2610 | 10 | White, Gray | \$19.50 |
| 2620 | 20 | Gray, White, Yellow | 30.25 |
| 2632 | 32 | Gray, White, Red, Yellow | 38.75 |
| 264360 | 44 | Gray, Black, Red, Yellow | 62.50 |
| 1779740 | 44 | White | 57.00 |
| 2655 | 55 | Gray | 87.00 |

Lids

| Item No. | Fits | Price/ea. |
|----------|-----------|-----------|
| 2609 | 10 Gallon | \$7.75 |
| 261960 | 20 Gallon | 9.00 |
| 2631 | 32 Gallon | 13.75 |
| 264560 | 44 Gallon | 21.75 |
| 2654 | 55 Gallon | 31.75 |



Dolly

Does not fit
10 gallon containers

| Item No. | Price/ea. |
|-----------|-----------|
| 2640000BK | \$54.75 |



SCRUB BRUSH

Dual surface floor brush, 10"L plastic block.

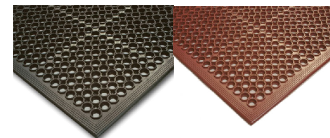
*Threaded Handle sold separately

40422 \$15.00/ea.



FLOOR MATTING

| Item No. | Description | Price/ea. |
|------------|--------------------------------|-----------|
| T30U0035BK | 3' x 5', Black general purpose | \$50.75 |
| T30U0035RD | 3' x 5', Red/Grease resistant | 66.25 |



BRONCO™ WASTE CONTAINERS

Round. White, Black, Yellow, Red, Green, Blue, Gray, Orange and Purple.

* 55 Gallon is not available in Orange and Purple

| Item No. | Gallons | Price/ea. |
|----------|---------|-----------|
| 341010 | 10 | \$12.50 |
| 341020 | 20 | 18.25 |
| 341032 | 32 | 25.50 |
| 341044 | 44 | 39.75 |
| 341055 | 55 | 59.75 |



Lids

| Item No. | Fits | Price/ea. |
|----------|-----------|-----------|
| 341011 | 10 Gallon | \$4.75 |
| 341021 | 20 Gallon | 5.00 |
| 341033 | 32 Gallon | 8.25 |
| 341045 | 44 Gallon | 14.50 |
| 341056 | 55 Gallon | 20.00 |



Dolly

| Item No. | Color | Price/ea. |
|----------|-------|-----------|
| 36911 | Black | \$35.50 |



PAPER TOWEL DISPENSER

| Item No. | Description | Price/ea. |
|----------|--------------------|-----------|
| T1800XC | Single Fold/Chrome | \$40.50 |
| TD-600 | Multi Fold/White | 18.50 |



SOAP DISPENSER

| Item No. | Description | Price/ea. |
|----------|-----------------|-----------|
| S970SS | 40 oz. capacity | \$40.00 |



HAND TRUCKS

| Item No. | Description | Price/ea. |
|----------|---------------------------------|-----------|
| 210127 | 500 lb. capacity, economy model | \$83.75 |
| 210032 | 800 lb. capacity, two handles | 142.50 |
| 210265 | 800 lb. capacity, Heavy Duty | 141.50 |



ONE-PIECE PLASTIC SQUEEGEES

Floor Squeegee Head (only), long, straight for smooth surfaces. Rust and bend resistant, rubber blade, plastic frame. Fits a threaded handle. Available Colors: White, Black, Yellow, Red, Green, Blue, Orange and Purple.



| Item No. | Length | Price/ea. |
|----------|--------|-----------|
| 36567 | 20" | \$15.50 |
| 36568 | 24" | 19.25 |

BENCH SQUEEGEES

Durable, solid and ultra-hygienic. One piece construction, single blade squeegee design. Available Colors: Green, Blue, Red, White, Pink, Orange, Purple and Yellow.



| Item No. | Length | Price/ea. |
|----------|--------|-----------|
| 7125 | 10" | \$19.00 |

DUST PAN

Rubberized plastic, Black. Requires a threaded handle. 8" x 12" Black.



| | |
|----------|------------|
| 36143703 | \$3.50/ea. |
|----------|------------|

"CAUTION" WET FLOOR SIGN

24"H x 12"W, easel-type sign. Yellow

| | |
|--------|------------|
| WFS-25 | \$8.50/ea. |
|--------|------------|



"CAUTION" WET FLOOR SIGN

27" high, tri-cone.

| | |
|---------|-------------|
| WCS-27T | \$12.00/ea. |
|---------|-------------|



PALLET TRUCKS

27" x 48".

| Item No. | Description | Price/ea. |
|----------|--|-----------|
| 272660 | 5,500 lb. capacity, 6"W fork | \$359.75 |
| 272667 | 5,500 lb. capacity, 6"W fork, hand brake | 398.50 |
| 272670 | 6,600 lb., heavy-duty, 7"W fork | 416.00 |

CORN BROOM - NO METAL OR WIRE

3020JAIL \$14.75/ea.



ANGLE BROOM - NO METAL

Angle broom, plastic head, fiber handle, 48" length.

2600-JAIL \$13.25/ea.



LOBBY DUST PAN

12" wide, hanging hole, pivot and plastic lock bucket, metal handle, black.

36141003 \$12.75/ea.



JAW-GRIP MOP HANDLE

Plastic head with fiberglass threaded handle. Use with wide band mop heads.

| Item No. | Length | Price/ea. |
|----------|--------|-----------|
| 36947500 | 60" | \$14.50 |



QUICK-CHANGE MOP HANDLE

Plastic head, wood handle. 60" length. Use with narrow band mops.

36936500 \$10.00/ea.



PLASTIC BOX TRUCKS

Ideal for transporting heavy material. 5" Polyurethane casters. Colors available: Grey, White, Blue, Red and Yellow.



| Item No. | Description | Price/ea. |
|----------|---------------------|-----------|
| 27251 | 96 gal./12 bushels | \$232.00 |
| 27252 | 160 gal./20 bushels | 281.00 |

CARLISLE

MOP BUCKET W/WRINGER

Mop bucket/wringer combination, 35 qt. with side press, polyethylene, non-marking casters, yellow.

3690404 \$63.50/ea.



Winco

ECONOMY MOP BUCKET/WRINGER

36 quart mop bucket w/wringer.

MPB-36 \$45.00/ea.



MOP BUCKET

Three inch non-marking swivel casters, embossed graduations and universal "caution" logo. Yellow. 35 qt.

335-39YW \$80.50/ea.



WET MOP HEAD

Flo-Pac® Wet Mop Head, 4 ply, looped-end, green synthetic/cotton blend yarn, washable, 5"W band.

369478B09 \$7.00/ea.



WET MOP HEAD

4 ply, cut-end, natural cotton yarn with 1-1/4"W textured polyester band.

369824B00 \$4.50/ea.



CARLISLE



MOP & BROOM HANDLES

| Item No. | Description | Price/ea. |
|----------|---|-----------|
| 40267 | 60", Wood, threaded | \$5.00 |
| 40225 | 60", Fiberglass, threaded with flex tip | 13.00 |
| 40262 | 60", Wood, tapered | 5.00 |

CORN BROOM

56" H, 12" wide head,
wood handle.

| Item No. | Price/ea |
|----------|----------|
| 4135067 | \$9.75 |



MOP/BROOM HOLDER

Wall mounted, stainless steel
construction.

| Item No. | Description | Price/ea. |
|----------|---------------------|-----------|
| 159-1139 | 7- 9/16"- 2 Hangers | \$52.00 |
| 159-1140 | 23-1/2"- 6 Hangers | 90.75 |



ONE-PIECE SHOVEL

Molded from FDA-compliant
polypropylene. It is tough, lightweight
and hygienic. It is a workhorse for
moving bulk materials.

Small Blade - 37.5" L

Large Blade - 42.5" L

Available Colors: Red, Yellow, Blue,
Green and White.



| Item No. | Description | Price/ea. |
|----------|-------------------------------|-----------|
| 6981 | Small blade, 10.2"W x 5.9"H | \$36.50 |
| 6982 | Large blade, 13.75"W x 6.6 "H | 38.75 |

MOP SINK

Floor mount, s/s construction,
20" wide x 16" front to back x 8" deep
bowl, 2" NPS drain with stainless steel
removable strainer plate.

| Item No. | Price/ea. |
|----------|-----------|
| F1916 | \$608.75 |



HOT WATER HOSE

25', 4/8" ID, withstands
hot water up to 200°F,
rubber jacket resists
abrasion.

| Item No. | Price/ea. |
|------------|-----------|
| T43S5025RD | \$23.75 |



DECK BRUSH

Dual surface floor scrub
brush. 10"L plastic block,
molded-in rubber squeegee.
*Requires a threaded handle

| Item No. | Price/ea |
|----------|----------|
| 3619014 | \$12.75 |



PORTABLE SOAK SINK

Stainless steel construction,
Sink - 24"W x 24"D x 8"D,
33"H, lever drain, 5" casters.

| Item No. | Price/ea |
|-----------|------------|
| MSS2020-X | \$1,250.00 |



PIVOTING AIR BLOWER

3-speed Air Blower. Compact to fit in
tight spaces. 120V.

Dimensions: 13" x 11" x 14.5"

| Item No. | Price/ea |
|----------|----------|
| 9550 | \$67.75 |



INDUSTRIAL GRADE DRUM FAN

The solution to moving large amounts
of air. 2-speed, belt driven, 120V.

| Item No. | Price/ea |
|----------|----------|
| 9942D | \$371.25 |



PEDESTAL FAN

20" Pedestal fan features 3-speed
rotary knob operation with a 3-paddle
fan blade and variable height adjustments.
120V.

| Item No. | Price/ea |
|----------|----------|
| 9420 | \$145.50 |



WRITE-ON MARKER BOARD

24" x 36", black and white
reversible, (5) markers.

| Item No. | Price/ea |
|----------|----------|
| 90031 | \$63.75 |



| | | | | | |
|-------------------------------------|----------|--------------------------------|----------|-----------------------------------|----------|
| AIR DOORS/CURTAINS | 58 | HOT DOG GRILL | 38 | SHARPENERS | 10 |
| AIRPOTS | 7 | HOT PADS | 24 | SHEARS/BOX CUTTER | 10,12 |
| APRONS..... | 24,25 | HOT WATER DISPENSERS | 28,43 | SHEET PAN COVERS | 17 |
| BEARD NETS/HAIR NETS | 25 | ICE CADDIES/SHOVELS | 14 | SHEET PANS | 17 |
| BEVERAGE CARTS | 31,34 | ICE DISPENSERS | 43 | SHELVING | 36,37 |
| BEVERAGE/WATER DISPENSERS | 28,30 | ICE MAKER/BIN | 42,43,54 | SIGNS | 12,25 |
| BEVERAGE SERVERS..... | 28,30 | INGREDIENT BINS | 26,27 | SKIMMERS | 15 |
| BLAST CHILLERS..... | 44 | INSET/COVER | 18 | SLICERS..... | 39,40 |
| BLENDERS..... | 27 | KETTLE STRAINER | 7 | SOUP WARMERS..... | 38 |
| BOOSTER HEATERS..... | 52 | KETTLES | 51,52 | SPATULAS | 9,10 |
| BOOTS..... | 26 | KNIFE HOLDERS..... | 12 | SPILLAGE PANS..... | 19 |
| BOWLS..... | 5,29 | KNIVES | 11,12 | SPOODLES..... | 6 |
| BOX TRUCKS | 57 | LUG RACKS | 27 | SPOONS | 7,29 |
| BREAD PANS | 16 | MATTING | 55 | SPRAY NOZZLES..... | 54 |
| BROOMS | 55-58 | MEASURING CUPS/SPOONS | 14 | SQUEEGEES..... | 55,56 |
| BRUSHES..... | 12,13,57 | MICROWAVES | 38 | SQUEEZE BOTTLES..... | 15 |
| BUS BOXES..... | 31 | MILK DISPENSERS | 30 | STEAMERS..... | 47 |
| CABINETS..... | 34,36 | MIXERS/ATTACHMENTS..... | 41,42 | STEAM TABLE PANS/TRANSPORT | 18,34 |
| CAN OPENERS..... | 12,22,23 | MIXING BOWLS/STAND DOLLY | 15 | STOCK POTS..... | 16 |
| CAN RACKS | 36 | MOP/BROOM HANDLES | 55,57 | STRAINERS | 7,15 |
| CHAFERS | 8 | MOP/BROOM HOLDERS..... | 58 | STRAPS | 2 |
| CHILLERS | 16 | MOB BUCKETS | 57 | TEST STRIPS/TABLETS..... | 22 |
| CEREAL DISPENSERS | 19 | MOP HEADS | 57 | THERMOMETERS..... | 21 |
| COFFEE BREWERS/DECANTERS | 28 | MUFFIN PANS | 16 | TILT SKILLETS..... | 47,48 |
| COLANDERS | 15 | MUGS | 4 | TIMERS..... | 13 |
| CONDIMENT DISPENSERS/RACKS | 15 | Ovens | 50,51 | TOASTERS..... | 39 |
| CROCKS | 29 | PADDLES | 7,9 | TONGS | 10,29 |
| CUTTING BOARDS..... | 12 | PAILS, SANITATION | 25 | TOWELS, BAR..... | 25 |
| DEADMAN BOX | 2 | PALLET TRUCKS | 56 | TOWEL DISPENSERS..... | 56 |
| DISHERS | 6 | PAN CARRIERS | 30,31 | TRANSPORT BAGS | 5 |
| DISHWASHERS | 53 | PAN GRATES | 16 | TRAY DELIVERY CARTS..... | 2,33,34 |
| DISHWASHER TEMP STRIPS/LABELS | 22 | PAN RACKS/COVERS..... | 36,37 | TRAY DRYING RACKS | 39 |
| DISPOSABLE GLOVE DISPENSERS..... | 23 | PANCAKE DISPENSERS | 13 | TRAY MAKE-UP CONVEYORS..... | 35 |
| DISPOSABLE LIDS | 4 | PANINI GRILLS | 38 | TRAYS/TRAY CARRIER | 2,3,5 |
| DOUGH CUTTERS | 10,13 | PASTRY BRUSHES..... | 13 | TUMBLERS..... | 3,4 |
| DREDGES | 14 | PEELERS | 9 | TURNERS..... | 6,10 |
| DUNNAGE RACKS | 35 | PIE SERVERS..... | 10 | UTILITY CARTS | 32,33 |
| DUST PANS..... | 56,57 | PITCHERS | 7 | UTILITY TETHER SYSTEM | 11,35,43 |
| FANS | 58 | PIZZA CUTTERS | 10 | VACUUM PACKAGING MACHINE..... | 38 |
| FAUCETS | 54 | PLATES | 5 | WASHRACKS | 32,53 |
| FIRST AID/BURN KITS | 26 | PLATFORM TRUCKS | 33 | WASHRACK DOLLIES | 32 |
| FLATWARE | 4 | POTATO CUTTERS/WEDGERS | 8 | WASTE CONTAINERS/DOLLIES | 55,56 |
| FLATWARE CYLINDER HOLDERS | 31,32 | POTATO MASHER | 7 | WATER FILTERS | 47,54 |
| FLOOR CONE/SIGNS | 56,57 | POTATO PEELERS..... | 41 | WHIPS | 7,9,10 |
| FOOD CUTTER/CHOPPERS | 8,40,41 | PROBE WIPES | 22 | WORKTABLES/EQUIPMENT STANDS | 35 |
| FOOD PROCESSORS | 39,40 | RANGES | 49 | | |
| FOOD STORAGE CONTAINERS | 19,20 | REFRIGERATORS/FREEZERS | 44,45 | | |
| FOOD STORAGE LABELS | 21 | ROASTING PANS | 17 | | |
| FRY PANS | 19 | ROLLING PINS | 13 | | |
| FRYERS/BASKETS | 16 | SAFETY DISPENSERS | 26 | | |
| GAS CONNECTORS | 54 | SANDWICH SPREADER..... | 10 | | |
| GLOVES/MITTS | 23,24 | SALAD/FOOD BAR..... | 28,29 | | |
| GRATERS | 15 | SAUCE PANS | 16 | | |
| GRIDDLE PADS/SCREENS | 25 | SAUCE POTS | 17 | | |
| GRIDDLES/STANDS | 50 | SCALES | 23 | | |
| HAMBURGER PRESS/MOLDS | 39 | SCOOPS | 8,14 | | |
| HAND SINKS | 54 | SCOOP HOLDERS..... | 14 | | |
| HAND TRUCKS | 56 | SCOUR PADS/SCRUBBERS..... | 25 | | |
| HANDWASHING CHART | 26 | SCRAPERS | 7,9-12 | | |
| HOT/COLD FOOD TABLE | 46 | SECURITY CARTS | 35,37 | | |

SOME PRICES SUBJECT TO FREIGHT CHARGES / DELIVERY SERVICES AVAILABLE



P.O Box 3367
Virginia Beach, VA 23454

Toll Free: (800) 551-0556
Surf on over to Crest's website at:
www.crestfoodservice.com

Crest Foodservice is not responsible for typographical or photographic errors, representation by manufacturers, or for merchandise that could be discontinued by the manufacturer or price imposed by the manufacturer.

2018 CORRECTIONS & INSTITUTIONS FOODSERVICE EQUIPMENT & SUPPLY CATALOG



ORDER ONLINE OR CALL US TODAY!



866-623-8954



CLEVELAND
A Welbilt Brand

GARLAND
A Welbilt Brand



Let Crest Design & Supply your kitchen from start to finish!

www.crestfoodservice.com